



## New Sustainable Canadian Agricultural Partnership

On April 3, the Sustainable Canadian Agricultural Partnership (Sustainable CAP or S-CAP) opened to receive applications. The S-CAP replaced the previous Canadian Agricultural Partnership program, which ended on March 31, 2023. All S-CAP program and contact information is available online at [www.alberta.ca/sustainable-cap.aspx](http://www.alberta.ca/sustainable-cap.aspx).

### What is similar between S-CAP and CAP?

The following producer programs are returning in the first year, with a slight change to the funding list or terms and conditions:

- ▶ Farm Technology program
- ▶ Efficient Grain Handling program
- ▶ Water
- ▶ On-Farm Value-Added

A current Environmental Farm Plan is required to receive funding under Farm Technology and Efficient Grain Handling programs.

### What is new to S-CAP?

- ▶ The Resilient Agricultural Landscape Program (RALP) is a new program that is meant to increase the environmental resiliency of agricultural landscapes by supporting adoption of beneficial management practices (BMPs) that provide ecosystem goods and services, particularly increased carbon sequestration and enhanced climate resilience.
- ▶ RALP also requires producers to have a current Environmental Farm Plan.
- ▶ Eligible RALP applicants are primary producers, grazing reserve associations, operators of community pastures, or approved Indigenous applicants.

### Application tips and more:

- ▶ Currently, the Farm Technology program and Efficient Grain Handling program are only available for the first year of S-CAP, which is April 1, 2023 to March 31, 2024. If you are interested in these programs, it's best to submit your application as soon as possible.

- ▶ Expenses prior to April 1, 2023 are ineligible. Receipts must be incurred within the dates of the program term applied for or they are not eligible.
- ▶ Applicant name must match name on submitted invoices, receipts, etc., or expenses will not be reimbursed.
- ▶ Applications must have a handwritten signature; a digital signature is not accepted at this time.
- ▶ Quotes must have a detailed breakdown of expenses, for example, a quote that shows 'grain dryer' only as an expense is not acceptable.
- ▶ Be proactive and sign up for web updates and the e-newsletter on the bottom of the S-CAP page. This is the best way to learn about any program changes.

### Alberta Environmental Farm Plan (EFP) Get started!

1. The first step of registration begins through the Alberta EFP website at [www.albertaefp.com](http://www.albertaefp.com) or by calling 1-587-200-2552 to receive over-the-phone assistance.
2. Once registered, click on the confirmation email you will have received to fully activate your account. A technician will be assigned to you over the following two weeks. If you feel comfortable, you can begin your online workbook right away.
3. If you have any questions, you can contact your technician or attend a local/online workshop to receive additional support.

# What is ALUS and how does it benefit our community?



ALUS Wetaskiwin-Leduc is a local program managed through the County of Wetaskiwin and Leduc County's sustainable agriculture program. Since the program's inception in 2016, 41 participants have enrolled 1,164 acres in the ALUS Wetaskiwin-Leduc program.

ALUS (originally an acronym for Alternative Land Use Services) is a national charitable organization that provides expertise, resources, and direct financial support to 35 communities across six provinces where more than 1,400 farmers and ranchers establish and steward nature-based solutions on their land.

These solutions deliver ecosystem services to help sustain agriculture

and provide nature's benefits to communities and future generations. Projects such as enhanced wetlands, windbreaks, riparian buffer zones, wildlife habitats, adaptive agricultural practices and other impactful environmental solutions produce cleaner air, cleaner water, greater biodiversity, carbon sequestration, erosion control, flood and drought mitigation, pollinator and wildlife habitat, and other ecological services.

The ALUS program rests firmly on eight core principles, and local communities use these principles to guide their programs. Learn more at [ALUS.ca](http://ALUS.ca).

ALUS is voluntary and farmer delivered. ALUS cost shares with the producer

on project establishment and provides annual management and maintenance payments to farmers and ranchers to ensure ongoing project stewardship. Common ALUS Wetaskiwin-Leduc projects include fencing to manage livestock access to creeks and wetlands and alternative watering systems. A livestock crossing, grassed waterway, native grass establishment and eco-buffer planting are other project examples.

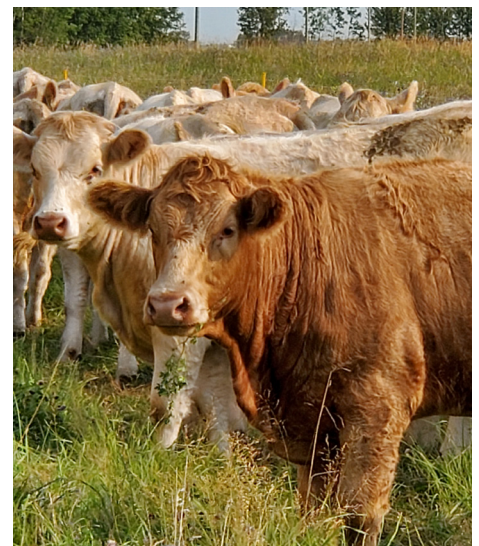
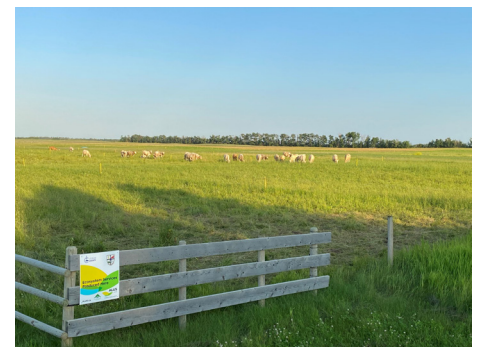
Kim Barkwell is the ALUS Wetaskiwin-Leduc program coordinator, and she would be happy to discuss any details regarding the program. Contact Kim by email at [KBarkwell@county10.ca](mailto:KBarkwell@county10.ca) or call **780-387-6182**.

## FARMERS & RANCHERS NEEDED

ALUS helps farmers and ranchers build nature based solutions on their land

**WE HELP ESTABLISH**

- ✓ Riparian Fencing
- ✓ Alternative Watering Systems
- ✓ Enhanced Wetland Buffers
- ✓ Grassed Waterways



[kimb@leduc-county.com](mailto:kimb@leduc-county.com)

Kim Barkwell  
ALUS Coordinator  
780 387 6182

[ALUSWETASKIWINLEDUC.CA](http://ALUSWETASKIWINLEDUC.CA)



# On-Farm Climate Action Fund

## Another producer program opportunity!

Why so many programs? Farmland has the ability to store carbon and reduce green house gas emissions and these are key tools to address a changing climate. Farmers produce food, but they can produce other natural benefits through their on-farm management practices.

This is the second season for these programs and some programs have received such high application rates that they are already fully subscribed or pausing intake!

- ▶ **Canola Council of Canada**  
Practices supported: nitrogen management specific to canola

production. Learn more at [www.canolacouncil.org/4r-advantage/](http://www.canolacouncil.org/4r-advantage/)

- ▶ **Canada Organic Trade Association and EcoCert Canada**  
Practices supported: nitrogen management and/or cover crops related to organic production. Learn more at [www.canada-organic.ca/en/what-we-do/market-access/farm-climate-action-fund](http://www.canada-organic.ca/en/what-we-do/market-access/farm-climate-action-fund)

- ▶ **Results Driven Agricultural Research** (paused applications effective May 10)  
Practices supported: nitrogen management, cover cropping and rotational grazing. Learn more at [www.rdar.ca/ofcaf](http://www.rdar.ca/ofcaf)

- ▶ **Canadian Forage and Grassland Association** (except for producers wanting to work with a grazing mentor to develop a rotational grazing plan, the program is fully subscribed) Practices supported: rotational grazing. Learn more at [www.canadianfga.ca/en/projects-projets/farm-climate-action-fund/](http://www.canadianfga.ca/en/projects-projets/farm-climate-action-fund/)

## Chemical container recycling moving to ag retailers

Full article available at [cleanfarms.ca/alberta-ag-forward-managing-on-farm-plastics/](http://cleanfarms.ca/alberta-ag-forward-managing-on-farm-plastics/)

The collection process for agricultural plastic pesticide and fertilizer containers less than 23 litres is being updated in Alberta. Instead of returning triple-rinsed jugs to municipal collection sites, ag retailers will manage collection depots on their sites instead.

An additional change to the process is collection bags. These large, clear plastic collection bags are free-of-charge and are used to make container collection, storage, and drop off more convenient and efficient.

More municipal locations will close their collection sites this year as ag retailer collection sites open. The updated process is scheduled to be completed by the end of 2024. Note that there are a few exceptions to this transition, and some sites will remain open because of their location and proximity of nearby retailers.

- ▶ There is a transition schedule available on the Cleanfarms website at [cleanfarms.ca/mb-ab-jug-transition/](http://cleanfarms.ca/mb-ab-jug-transition/).
- ▶ Ask your ag retailer if they have begun to accept empty containers and if they have the clear plastic collection bags.
- ▶ More information is also available on Leduc County's weed control webpage, located at [www.leduc-county.com/en/living-here/weed-control.aspx](http://www.leduc-county.com/en/living-here/weed-control.aspx).



The pilot project is led by the multi-stakeholder Agricultural Plastics Recycling Group; funds were granted by the Government of Alberta and are administered by Alberta Beef Producers.



# Stay connected

## Leduc County

Sign up for Ag Matters, Leduc County's monthly agricultural e-newsletter. Subscribe at [www.leduc-county.com/agriculture](http://www.leduc-county.com/agriculture).

## County of Wetaskiwin

Receive email/text message updates directly to your phone from the County of Wetaskiwin about agricultural services such as mowing, spraying, the ALUS program, weeds and pest control.

To sign up, visit [www.county.wetaskiwin.ab.ca/list](http://www.county.wetaskiwin.ab.ca/list), enter your email address, scroll down to News Flashes and select the letter(email) or phone(text) icon next to Agricultural to subscribe. For assistance, contact **780-361-6220**.

## Looking for more?

If you have any questions or wish to bring a matter to the attention of your Agricultural Service Board, please contact:

- ▶ County of Wetaskiwin No. 10 Agricultural Services: 780-361-6226 or visit [www.county.wetaskiwin.ab.ca](http://www.county.wetaskiwin.ab.ca)
- ▶ Leduc County Agricultural Services: 780-955-4593 or visit [www.leduc-county.com](http://www.leduc-county.com)

# Kim's corner

## Opportunities and information

If you want to incorporate some 'new to you' practices on the farm, or up your game on current practices, now is a great time to try! Many practices are being financially supported through a variety of programs. Cover cropping, nitrogen management, enhanced rotational grazing, riparian area management, intercropping, wetland replacement and tree establishment are all project examples. Some of the projects supported will enhance farm resiliency and position your farm for future generations.

Adopting new beneficial management practices comes at a cost, and some will benefit the overall environment but offer limited private return. The ALUS program was built around this very concept, recognizing that farmers can provide nature-based solutions on their land that benefit the whole community. The *Resilient Agricultural Landscape Program* through S-CAP takes a similar approach.

Another good practice is to investigate funding possibilities before you start a project on the farm. Find out if there is support available that match your plans. There is a great deal of information out there, but it may no longer be in the form you are used to. Most of us have email, and one strategy is to sign up for email (or text) updates from municipal and grant websites or subscribe to e-newsletters from grants or commodity groups. Agri-News is a weekly e-newsletter from Alberta Agriculture and Irrigation, and the subscription link can be found on their website at [www.alberta.ca/agri-news.aspx](http://www.alberta.ca/agri-news.aspx).

Be proactive; don't wait for your neighbours to tell you or be disappointed to learn your completed project is not eligible after the fact.



**"A Taste of Leduc County"**  
Farm to Table Dinner, Bus Tour & Market

**Saturday, August 12, 2023**  
Time: 12-9PM || Dinner 5-9PM  
Cost: \$120-\$140 +GST

At The Old Red Barn, Leduc County  
[www.theoldredbarn.ca](http://www.theoldredbarn.ca)  
IG: @oldredbarnleduc

