

2020 FALL NEWSLETTER



COUNTY OF WETASKIWIN NO. 10

Mailing: Box 6960

Wetaskiwin, AB T9A 2G5

Physical: 243019A HWY 13

Phone: 780-352-3321 Fax: 780-352-3486

Website: www.county.wetaskiwin.ab.ca

Facebook: facebook.com/wetaskiwincounty



Strong Proactive Leadership | Safe Progressive Communities

COUNCIL



Bill Krahn

Division 1 Councillor
312-4226 C
bkrahn@county10.ca



Terry Van de Kraats

Division 2 Councillor
352-2395 H | 387-6437 C
tvandekraats@county10.ca



Dale Woitt

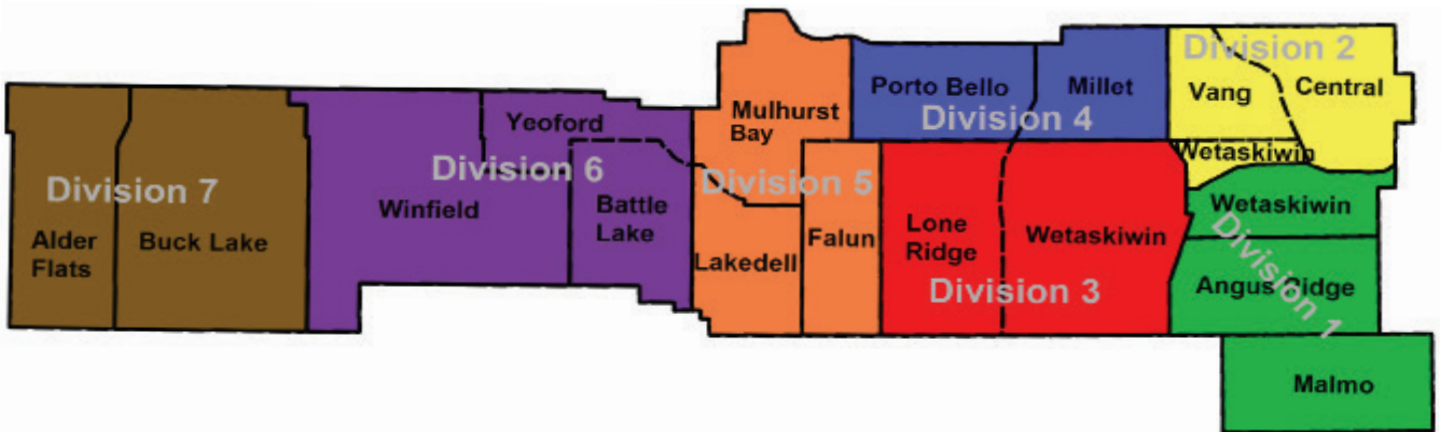
Division 3 Councillor
352-7429 H | 360-2737 C
dwoitt@county10.ca



Josh Bishop

Division 4 Councillor
(Reeve)
387-8483 C
jbishop@county10.ca

All Councillor Area Codes are 780



Ken Adair

Division 5 Councillor
352-6318 H | 361-6398 C
kadair@county10.ca



Kathy Rooyakkers

Division 6 Councillor
682-2353 H | 514-9087 C
krooyakkers@county10.ca



Lyle Seely

Division 7 Councillor
(Deputy Reeve)
388-3894 H | 621-1044 C
lseely@county10.ca

MESSAGE FROM REEVE JOSH BISHOP

At the Organizational Meeting held on October 27, 2020 I was elected as Reeve for the next year. It is an honour and privilege to serve the County in my new role.

COVID-19 UPDATE

COVID-19 cases continue to rise in our region. On November 12, 2020, the County of Wetaskiwin moved to Enhanced Status. If you wish to receive notification of when the County moves in and out of enhanced status sign-up at www.alberta.ca/covid-19-status-notification.aspx. The County wants to encourage everyone to continue to follow the guidelines and mandates of Alberta Health Services including staying home if you are sick, avoiding crowds, socializing safely, maintaining physical distancing, wearing a mask when in public, and washing your hands frequently. Please visit <https://www.alberta.ca/coronavirus-info-for-albertans.aspx> for the most up to date COVID numbers, restrictions and guidelines.

OIL & GAS ASSESSMENT MODEL REVIEW UPDATE

We have faced many challenges this year. One of the most significant was the Government of Alberta's proposed oil & gas assessment model review. The provincial government's original proposal would have drastically reduced the assessment of oil and gas wells and pipelines throughout the province. Under the proposed model, the County would have lost anywhere from \$1.9 to \$3.8 million in yearly revenues. Thanks to advocacy from rural Albertans, the Government of Alberta announced a pause on the proposed assessment model changes for the next three years. Instead the Minister of Municipal Affairs, Tracy Allard, announced a temporary tax exemption for new wells and pipelines in an effort to attract more investment and incentivise job creation in the industry. The government will also lower assessment for less productive oil and gas wells.

While the County is grateful that the proposed changes have been put on hold for now, the upcoming tax exemption for new wells and pipelines will impact the County's future revenues. For 2021, the County expects to lose an estimated \$725,000 in revenue.

PUBLIC ENGAGEMENT

On September 29 & 30 the County hosted four public engagement sessions that focused on roads, hamlet revitalization, and provincial downloading. I would like to thank the residents who attended and provided us with valuable feedback. Unfortunately, we had to limit the number of attendees due to COVID-19 but moving forward Council would like to host more public engagement opportunities. Personally, I appreciate meeting people from all over the County and hearing their concerns. The conversations were respectful and informative. I would like to encourage everyone to please sign up to participate in our next round of public engagements and in the meantime feel free to contact your local Councillor. A completed report on our engagements will be available on the County website in the coming weeks <https://www.county.wetaskiwin.ab.ca/740/Public-Engagement>

SERVICE CAPACITY REVIEW

Administration has been working to implement the recommendations that came out of the Service Capacity Review. Many have been completed while others will take quite some time to fully implement. Some of these steps have allowed us to realize cost savings and higher productivity. For example, the County has already implemented the fall gravelling program and added gravel packers to our graders. The combination of these two projects will end up increasing efficiency in the gravelling budget with those funds going towards much needed road upgrades. Moving forward, residents will continue to see changes at the County as we implement our new organization chart that will help us better allocate resources where they are needed.

MESSAGE FROM REEVE - CONT'

BUDGET 2021

Our next big project will be budget 2021 and there are many challenges to say the least. Increased costs and reduced funding sources are going to impact our decision making for the next several years. Many hard discussions and difficult decisions will need to be made. As we deliberate in the coming months, Council as well as staff understand the position we are in and will work diligently as a team to minimize the impact to our ratepayers. Budget 2021 will be presented to Council on December 22, 2020, at 10:00 a.m.

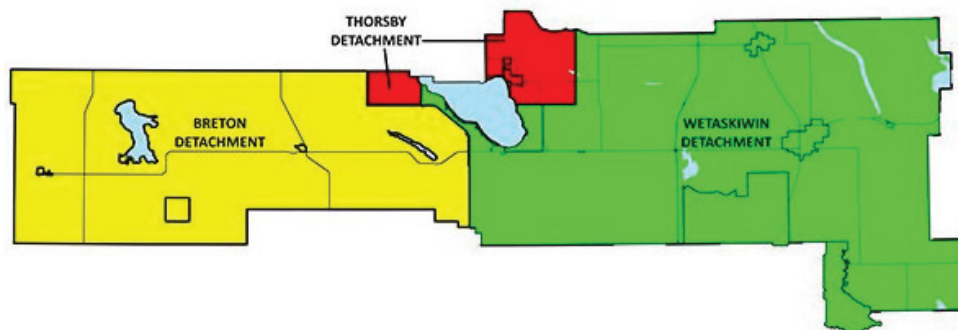
POLICE FUNDING

As a result of changes to the police funding model announced by the Government of Alberta last year, the County is now required to contribute towards front-line policing costs. The table below shows what the County will have to pay each year going forward.

Year	Percent of front-line costs	Cost to County
2020	10%	\$284,800.00
2021	15%	\$427,506.00
2022	20%	\$569,600.00
2023 and beyond	30%	\$855,012.00

These numbers are calculated by the province through a formula, which is based equally on the total population and total equalized assessment of each municipality. County Council has decided to separate out these costs on tax notices. Residents will see a separate line that shows exactly how much their taxes have increased due to this provincial download.

Previously, the County also received a credit towards these new costs for contracting with the RCMP for an Enhanced Member. This Member is paid for by the County and is currently based out of the Breton RCMP Detachment. This contract expires in 2021 and the County will no longer receive a monetary credit for that member. At this time, it is unknown if the Enhanced Member will remain within the County, as they will no longer be paid for by the County and may be assigned elsewhere based on the overall needs of the RCMP as decided by the provincial government. Additionally, the County has received no guarantee from the provincial government that these increased contributions will lead to greater service from the RCMP for our residents.



The County is primarily served by detachments based out of Wetaskiwin, Thorsby, and Breton, which together employ approximately 20 Provincial RCMP Members and various support staff. The map above outlines the areas each detachment is responsible for within the County.

THE COUNTY HAS A NEW SUBDIVISION AUTHORITY

As of September 1, 2020, the County is exclusively working with Municipal Planning Services (MPS) Ltd. to take care of the County's Subdivision applications. The County's move from West Central Planning Agency to Municipal Planning Services occurred because of a recommendation that came out of the County's Service Capacity Review to review current external planning services and investigate opportunities for increased level of service.

MPS acts as the Subdivision Authority Officer for the County, which means that not only do they review applications for subdivisions but they also make recommendations on the applications. Their role in the subdivision process is to:

1. Process applications in a timely manner as mandated by the Municipal Government Act; and
2. To ensure that prior to approval of an application for subdivision, the application conforms to regional planning documents, applicable Provincial Statutes and Regulations, the municipality's Land Use Bylaw, Municipal Development Plan, applicable Area Structure Plans and any other applicable master planning document approved by the municipality.
3. To answer questions and provide direction regarding the subdivision process to municipal clients and potential subdivision applicants.

If subdivision is in your future, you can contact Municipal Planning Services (MPS) at Phone: 780-486-1991, Fax: 780-483-7326, Email: admin@munplan.ab.ca, Mail: #206, 17511-107 Ave NW, Edmonton, AB, T5S 1E5, Website: www.munplan.ab.ca/

INTERMUNICIPAL COLLABORATION FRAMEWORKS

Over the past three years, the County has been working diligently with our neighboring municipalities to create and adopt Intermunicipal Collaboration Frameworks (ICFs). These ICFs are intermunicipal agreements that are required by the provincial government and allow municipalities to formally recognize areas of collaboration and opportunities for shared services.

The County currently has ICFs in place with all of our neighboring municipalities, including the City of Wetaskiwin, the Town of Millet, the Summer Villages around Pigeon Lake, and the rural municipalities the County shares boundaries with.

ICFs encourage neighboring municipalities to work together to provide services to their residents in a cost-efficient and beneficial manner. Some of the services that these ICFs highlight include recreation, mutual aid agreements, fire services, road use, and various other areas of mutual agreement and cooperation.

Going forward, these ICFs will allow the County to have more periodic and formal meetings with our neighboring municipalities. Through these meetings, the County hopes to be able to further improve local cooperation and bring more cost-efficient and collaborative services to our ratepayers.

For more information on the County's ICFs and copies of the agreements themselves, please visit the County website at: <https://www.county.wetaskiwin.ab.ca/622/Intermunicipal-Collaboration-Framework>.

For more information on ICFs in general, please visit the Province's website at:
<https://www.alberta.ca/intermunicipal-collaboration-framework.aspx>.

PUBLIC WORKS

Wet weather and extreme storms had significant impact on County roads causing road damage, soft roads, gravel loss, culvert damage, drainage issues and project delays throughout the County this spring and summer. The weather did improve through August and September which allowed for crews to work the roads and address multiple failed centreline culverts. There was a total of 78 culverts and 2 deep fill culverts installed this year.

COVID-19 Stimulus Package:

The County received good news in the form of grant money provided under the Alberta Water and Wastewater Municipal Program (AMWWP). Early in April, the County was asked to submit a list of projects that could possibly be completed in 2020 to stimulate the economy following the COVID-19 pandemic shut down. The County submitted a lengthy list which covered all aspects of roads, bridges, water, and sewer. The projects approved for 75% funding are:

1. Gwynne Lagoon Upgrades	\$700,000
2. Winfield Liner Repair	\$350,000
3. Winfield Water Treatment Plant Upgrades	\$250,000
4. Mulhurst Water Treatment Plant Upgrades	\$200,000
	\$1,850,000 total project costs
	\$1,126,000 total AMWWP grant



These projects are underway with preliminary design. They will be completed in 2021.

2020 Shoulder Pulls Campaign:

At the June 2020 PW Council meeting, Council approved the addition of a Shoulder Pull Campaign to address roads in need of restructuring. The \$830,000 funding was from MSI and was allocated to four projects located throughout the County. Four projects were selected to be completed in the fall 2020:



Project 1:

- TR 462 (0.5 km) from RR 63 west
- TR 464 (5.36 km) from Hwy 22 to Buck Lake Estates

Project 2:

- RR 41 (3.2 km) from TR 464 to TR 470
- RR 35 (2.4 km) from Hwy 20 to TR 464

Project 3:

- RR 272 (6.4 km) from TR 454 to Hwy 13
- RR 253 (3.2 km) from TR 464 to TR 470
- RR 244 (2.4 km) from TR 464 south

Project 4:

- RR 245 (3.2 km) from TR 470 to TR 472
- RR 241 (6.4 km) from TR 460 south to TR 452

In an effort to continually find efficiencies, the County conducted a cost evaluation of the 2020 Shoulder Pull Campaign with the 2018 and 2019 shoulder pull projects. The average contractor cost for the 2020 Shoulder Pull Campaign was \$26,751 per km compared to the average cost for third party consulting and contracting in 2018-19 of \$44,806 per km. The 2020 Shoulder Pull Campaign completed 33.06 km at a total cost (internal and contracting costs) of \$927,938, or \$28,068 per km.

G3 Resource Road Project:

The County portion of the G3 Resource Road was completed this fall. The G3 Canada portion of the work at Hwy 2A is not yet complete. The work remaining is CPR and Hwy signalization.

Solid Waste Transfer Station 2020 Holiday Season Schedule

Saturday, December 19	All sites OPEN	9:00 am – 5:00 pm
Monday, December 21	Lakedell OPEN	9:00 am – 5:00 pm
Tuesday, December 22	All Sites OPEN (except Lakedell & Peace Hills)	9:00 am – 5:00 pm
Wednesday, December 23	Lakedell & Peace Hills OPEN	9:00 am – 5:00 pm
Thursday, December 24	All Sites CLOSED	
Saturday, December 26	All Sites CLOSED	
Monday, December 28	Lakedell OPEN	9:00 am – 5:00 pm
Tuesday, December 29	All Sites OPEN (except Lakedell & Peace Hills)	9:00 am – 5:00 pm
Wednesday, December 30	Lakedell & Peace Hills OPEN	9:00 am – 5:00 pm
Thursday, December 31	Millet OPEN	12:00 noon – 8:00 pm
Saturday, January 2	All Sites OPEN	9:00 am – 5:00 pm

ELECTRONICS EXPANDED Alberta recycling

SMALL APPLIANCES	AUDIO VISUAL	TELECOM	POWER AND AIR TOOLS	GAMES, TOYS AND MUSIC
Fan Heater Iron Microwave Vacuum Shaver	CD Player Radio DVD Player Headphones Speakers Camera	Cell Phone Modem Pager Landline Answer Machine	Drill Grinder Saw Nail Gun Compressor Shop Vac	Amplifier Guitar Keyboard Toy Robots Toy Vehicles

Ask us about other electronics not listed above or visit ARMAepilot.com

Available at all County Transfer Stations

Contact the Utilities Department for more information 780-361-6241

MANDATORY Entry-Level Training for Class 1 and 2 Driver's Licences



Licence received before October 11, 2018

*If you had a Class 1 or 2 driver's licence before October 11, 2018, you are not required to take the MELT program or road tests.

Transition drivers — licence received between October 11, 2018 and February 28, 2019

*If you got a Class 1 or 2 driver's licence between October 11, 2018 and February 28, 2019, you will be put on a probationary period that ends two years from the date you received your Class 1 or Class 2 licence. You must maintain a clean driving record during that time.

For more information, please visit:

<https://www.alberta.ca/mandatory-entry-level-training-for-class-1-and-2-drivers-licences.aspx>

Community Peace Officers

Summary of the Summer - 2020 Edition



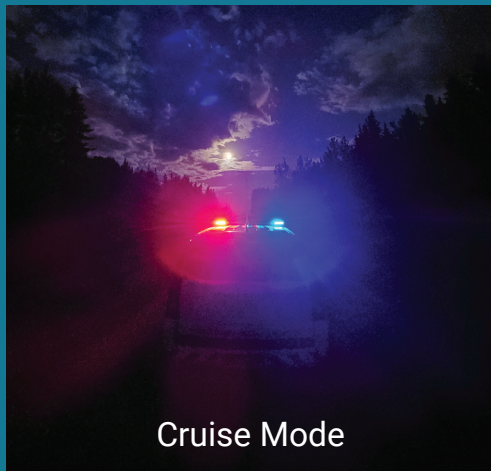
COVID-19

During the Provincial State of Emergency, CPOs were tasked with assisting Alberta Health Services with ensuring compliance with COVID-19 Public Health Orders. Generally speaking, almost all the files were concluded by voluntary compliance through education.

Community Visibility

As per direction from Council, CPOs are to be visible to the citizens they serve. Over the summer, officers have set up numerous safety compliance checks across the County in problem areas. The checks often include local police and other agencies.

Additionally, the cruise light pilot project was extremely successful and is now standard patrol policy.



Cruise Mode

The red and blue cruise lights are used generally at night and in subdivisions, campgrounds, and hamlets.

Peace Officers were also asked by numerous construction zone crews to be visible and ensure their safety while working. Some of the zones were on Highway 13 near Winfield and Highway 2A just south of Wetaskiwin.

Commercial Vehicles and Infrastructure Protection

CPOs have seen an increase in overweight commercial vehicles operating on County roads in the past few months, such as:

In 2019 the County invested over \$750,000 upgrading Battle Lake Trail. While patrolling the road this past July, a Peace Officer came upon an 88 ton mobile crane operating without enough wheels under it. Further investigation found the crane drove the entire length of the new road substantially overloaded, twice. The carrier was subsequently charged. It was one the largest fines ever issued by the County.

A tanker hauling dangerous goods was stopped for safety inspection north of Alder Flats. The officer found numerous major safety violations and declared the unit out of service for brakes being out of adjustment, steering box failure, and a broken fifth wheel. The unit was also found to be overweight.

The Mink Ranch Road north of Wetaskiwin is banned at fifty percent (50%) because it is an oiled road. A CPO observed a large load being hauled on the road. Further investigation found the carrier was off its route and had no authorization from the County. The carrier was fined for a substantial axle overweight.

A 40 ton mine loader was stopped for travelling down the road in Division 1. The driver was found to be under a licence suspension. The loader was so large that it is prohibited from being hauled under law, the maximum allowable weight being only twenty-two tons. The owner was charged for the overweight violation and the driver was ticketed.

Public Relations

The COVID-19 pandemic has put a damper on some the normal community functions Officers participate in like raising funds for the Special Olympics. Officers did what they could and focused on smaller ambassador functions like hosting bike safety rodeos and attending Terry Fox Runs. Of note, Officers were approached by a terminally ill child who wanted to be in law enforcement. With the help of the County, free camping passes and camping supplies were provided for his family through the generosity of the Officers.

Impaired Driving / Twenty-Four-Hour Suspensions

Peace Officers have seen an alarming increase in liquor consumption prior to driving. Since April 1st there were 20 separate occurrences where impaired driving was suspected or resulted in a twenty-four-hour suspension being issued. Suspected impaired drivers were turned over to local police and their vehicles were seized in accordance with legislation.

A motorist, who only had a GDL licence, was stopped for driving at 155 km/h in a 100 km/h zone in Division 6. The driver displayed signs of intoxication and the RCMP attended. The driver was arrested.

A vehicle was stopped in Division 1 for a licence plate violation. The driver was found to be extremely intoxicated and under suspension. The driver was arrested by the RCMP and blew more than three times the legal limit.

A driver was stopped for travelling at 139 km/h in an 80 km/h zone on RR 240 near Millet. The driver was found to be intoxicated and was arrested. The driver blew twice the legal limit.

While on patrol in Division 3, a Peace Officer stopped a suspicious vehicle finding four minors on board. The occupants had cannabis and other related paraphernalia within easy access. The Officer issued a twenty-four-hour licence suspension and called the parents to come and get their kids.

A CPO conducted a traffic stop in Division 3 on a vehicle after it almost side swiped his patrol vehicle. The driver was found to be intoxicated and had been previously charged with impaired driving only two weeks prior. In addition to driving while suspended, the vehicle had no insurance and was unregistered. Further investigation lead to a large amount of liquor within easy reach of three intoxicated passengers. Police attended and found methamphetamine, cannabis and a large knife.

Odds and Ends

While on patrol near Buck Lake, a CPO was flagged down by a driver who advised he wanted to harm himself and had a warrant for his arrest. The male, who was quite intoxicated, was actively drinking vodka during the encounter. The Officer kept the driver calm until local police arrived. The driver was admitted to hospital relating to his mental health. The driver is also facing a refusal to provide a breath sample charge.

At the request of local police, CPOs aided with a search and rescue operation regarding missing boaters west of Alder Flats. The CPO took the lead in locating the missing husband that was eventually located.

While on patrol south of Wetaskiwin, a Peace Officer came upon a farm tractor with ripper attached to it. The driver was using the ripper to dig a trench into the ditch of the range road to drain water from a field near a gas line.

CPOs also found 36 uninsured motor vehicles since April 1.

Speeding

Across Alberta, law enforcement agencies have been reporting increasing numbers of speeding motorists. CPOs saw the same trend within their jurisdiction.

A driver was caught at 205 km/h on Highway 13 west of Wetaskiwin. The Officer found open cannabis and liquor in the vehicle. The driver was issued a summons and ordered to see a judge.

A driver was caught for speeding at 171 km/h in a 100 km/h zone in Division 4. The Officer found a set of two-year-old twins not secured in child occupant restraints. A summons was issued.

Another driver was issued a summons for travelling at 197 km/h on Highway 814 north of Wetaskiwin.

For more information on the CPO program, please contact:
Jeff Chipley, Assistant Chief Administrative Officer
Email: jchipley@county10.ca

Mulhurst Fire
Department
houses a Search
& Rescue Boat



Ice & Water Rescue



South Pigeon
Lake Fire
Department
houses a Search
& Rescue SeaDoo

2019
5 Calls

~~~~~  
2020 to date  
9 Calls

**1036 combined years of service in our  
Fire Departments! Thank you for all your  
hard work and dedication!**

South Pigeon Lake - 182 years  
Winfield - 157 years  
Buck Lake/Alder Flats - 77 years  
Mulhurst Bay - 108 years  
Wetaskiwin - 220 years  
Millet - 292 years

**In 2019 the top 3 callouts for the County of  
Wetaskiwin Fire Departments were:**

Medical First Response/RCMP/EMS Assist - 105 calls  
Motor Vehicle Collisions - 96 calls  
Alarms - 53 calls



## Did You Know?

Mike Zajac is the  
Director of Emergency  
Services for the  
County of Wetaskiwin.

Part of his job is overseeing  
all of the Fire Departments,  
but each Fire Department  
also has its own Fire Chief  
to oversee the day to day  
operations.

### Wetaskiwin

Jamie Wilkinson

### Millet

Steve Moen

### Mulhurst

Butch Russell

### South Pigeon Lake

Wayne Benson

### Winfield

Barry Clarkson

### Buck Lake/Alder Flats

Rod Narkus



# Agricultural Services

Strychnine sales have been better than the past couple of years with the County selling 664 bottles of strychnine. The County has until March 4, 2022 to sell to producers and the producers have until March 4, 2023 to use the product. After 2023 producers will not have this option to control ground squirrels.

Beaver Control has been very active this year with two hundred and eighty-three (283) beaver trapped or removed. To date fifty-seven (57) dams have been breached from problem locations throughout the County.

The Roadside Spraying Program started on June 15th for Noxious Weeds, Prohibited Noxious Weeds, Brush and Sweet Clover. All Range Roads (north/south roads) South of Highway 13 were sprayed and completed on July 16th.

The Roadside Mowing Program started on June 1 with two tractors, side arms and fifteen-foot mowers cutting vegetation along County roads and one tractor with ten-foot pull behind mower cutting Subdivisions, Hamlets, Transfer Stations etc. Over 2,400 ditch miles have been mowed.

Rental equipment was well used this year especially the skunk traps, magpie traps and the pasture sprayers. The sprayers have been rented by producers from all over the County. Administration was going to have the sprayers available from the Winfield Shop but due to the road/flooding issues had two producers renting the sprayers from their farms. One was just east of Winfield and the other just south of Buck Lake. Several producers rented the sprayers from these two properties.

Six Weed Inspectors were hired to inspect properties for Noxious and Prohibited Noxious Weeds throughout the County. There were 8,434 properties inspected, resulting in 3,303 weed letters advising of the weeds and the clean-up process. 82 property owners were sent a weed notice, which is a follow-up to a weed letter, and requires immediate clean-up and authorizes the municipality to take action by a specified date, if the property owner fails to do the clean-up.

If you have any questions regarding the Agricultural Services programs, please contact Stephen Majek, Director of Agricultural Services, at 780-361-6226 or email [smajek@county10.ca](mailto:smajek@county10.ca).



# Trailblazers

## ALUS Wetaskiwin-Leduc participant Bradley Robins

**Alberta trailblazer Bradley Robins participates in the ALUS Wetaskiwin-Leduc program, a partnership between The County of Wetaskiwin, Leduc County and ALUS Canada, A Weston Family Initiative.**



ALUS Wetaskiwin-Leduc participant Bradley Robins (on right) farms with his father, Dwayne Robins (on left). (Photo: Sarah Cassie)

ALUS Wetaskiwin-Leduc participant Bradley Robins farms 1,200 acres near Usona, Alberta.

While he works as a surveyor with a commercial drone license, Brad is not new to the farming way of life: The Robins family has been farming in the area for four generations; Brad's children are the fifth generation on the farm.

Brad signed up as an ALUS participant in 2017. He had found out about ALUS when he saw an advertisement that ALUS Wetaskiwin-Leduc Program Coordinator Kim Barkwell had placed in the local paper.

He did a little research into the program and discovered that it was a good fit for his own plans and priorities.

"ALUS has the same goals as we do," Brad says.

**“ALUS has the same goals as we do.”**

Specifically, Brad wanted to prevent the cattle from sourcing their water directly from the wetlands on a recently purchased quarter-section (160 acres). Instead, he wished to protect the wetlands from damage and improve their ability to provide habitat for wildlife.

Before establishing a fence around the wetlands, Brad needed to dig a new well to supply an off-site watering system for the cattle.

Once that was established, ALUS helped him fence off a 10-acre area around a low spot with three adjacent wetlands, to prevent cattle from accessing them and damaging the wildlife habitat.

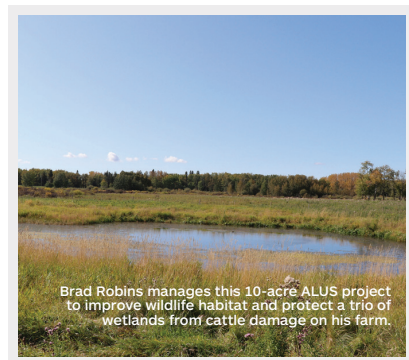
It seems to be working. In a 2018 monitoring report, they noted many more frogs and native plants in the area of their ALUS project after just one year, and more wildlife sightings have become commonplace in the years since.

"My father and I have seen waterfowl and herons on those ALUS wetlands," Brad adds. "Jackrabbits are coming back too; we had not seen those in a long time!"

As an ALUS participant, Brad receives annual payments to recognize the time and effort he spends maintaining the fences and controlling invasive weed species each year.

He manages the project to ensure that the enhanced wetlands keep producing cleaner water, cleaner air and additional biodiversity on his land. Also known as ecosystem services, these benefits are valuable for the community at large.

ALUS is proud to count Bradley Robins among its Trail Blazers in Alberta.



Brad Robins manages this 10-acre ALUS project to improve wildlife habitat and protect a trio of wetlands from cattle damage on his farm.

## Become an ALUS Trailblazer!

**ALUS recognizes the important role farmers and ranchers play as stewards of the land and helps them provide solutions to some of the most pressing conservation challenges of our time, including biodiversity loss, flooding, and water quality in lakes and rivers.**

**For more information on the ALUS program in Alberta, visit [ALUS.ca](http://ALUS.ca) and contact ALUS Canada's Western Hub Manager.**





# MOUNTAIN PINE BEETLE UPDATE

## ***History:***

The first mountain pine beetle infestation in the County of Wetaskiwin was discovered in the summer of 2018. County staff began scouting in 2019 and had 40 confirmed sites. In 2020 there were 5 additional sites identified however the attacks appeared to be from a previous year. Mike Under-shultz, Forestry Officer for Alberta Agriculture and Forestry explained that there were very low reproduction numbers in the 2019/20 winter, therefore there was a small flight of beetles in 2020.



## ***Control:***

Alberta Ag and Forestry recommends that pine trees with over 40 pitch tubes be removed by chipping, peeling, or burning on site.

Verbenone is a synthetic anti-aggregation pheromone that gives the beetles a "No Vacancy" message so they continue on their flight. These verbenone pouches are attached to the north side of the tree about 6 – 8' from the ground and cover 15 square meters. The



pouches need to be hung around July 1st in order to be effective for the mid July flight. The County sold 500 pouches in 2019 and 1,500 in 2020. If you are interested in purchasing verbenone pouches at \$10.00/pouch in 2021 the County will be accepting pre-paid orders until May 19, 2021. Please watch the Pipestone Flyer and the Spring Newsletter for the distribution date. The County has applied for a mountain pine beetle grant for 2021. Awarding of the grant will not be known until early 2021.

COUNTY OF WETASKIWIN  
FAMILY AND COMMUNITY SUPPORT SERVICES

## Home Support Services



### AGING IN PLACE

As you age, the little jobs become big jobs and we can help. Light housekeeping services will allow you to maintain your independence and the opportunity to stay in your home.

### NEW PARENTS

Sometimes, new parents just need a little help. FCSS offers light housekeeping services for up to 8 weeks postpartum. Take the extra time to bond with your new baby, spend time with your existing kids or have a coffee date and feel "human" again. Contact FCSS prior to delivery to ensure we can help when needed.



### INJURY, SURGERY, OR TREATMENT

We know that you may not need us forever, but let us help you heal. Take the time to recover without worrying who will vacuum or clean bathrooms.

### **Fees are based on annual income.**

For further information contact  
FCSS Community Program Coordinator  
780-352-3321 ext 2292 or fcssadmin@county10.ca





# NEW MULHURST BAY PLAYGROUND

In 2019 a group of citizens from Mulhurst Bay came together to create the Mulhurst Bay Revitalization Plan which set out several initiatives to meet the ever-changing needs and aspirations of the Mulhurst Bay community. This plan was presented to Council on August 13, 2019.



In the 2020 Recreation Budget, Council approved funding for the Mulhurst Bay playground, parking lot and drainage. Initial construction of the playground was delayed due to COVID-19 and our wet spring but on September 28, 2020 construction began.

Installation of the playground was completed by Park N Play with the excavation of the site, installation of border and sand was completed by County Public Works, Agricultural Services and Parks Staff. The playground portion of the project was completed on October 9, 2020.

The County of Wetaskiwin would like to thank the Mulhurst Bay Revitalization Committee members Kate Brown, Ken Adair, Catherine Peirce, Randal Kay, and Richard Conrad for their assistance and support with this project.



**Effective November 25, 2020  
Winfield Arena is CLOSED due to COVID-19**



For the most up-to-date information visit [www.county.wetaskiwin.ab.ca](http://www.county.wetaskiwin.ab.ca) or call 780-352-3321

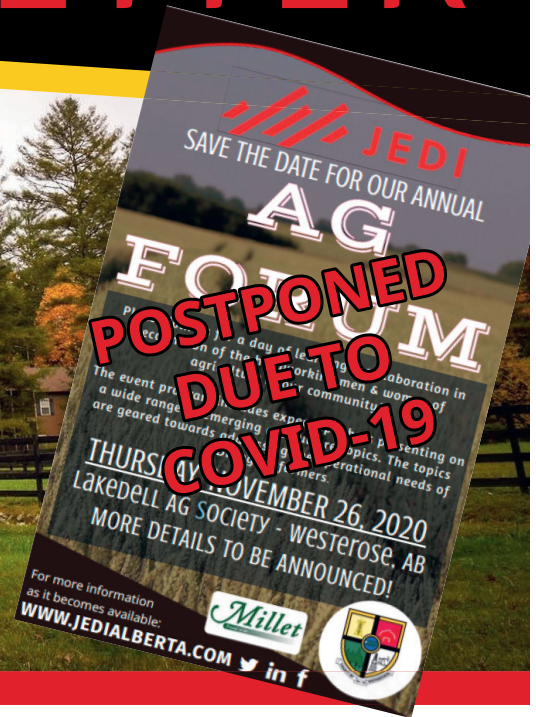


Joint Economic  
Development Initiative

FALL 2020

# NEWSLETTER

JEDI is here  
to guide  
you in  
business



JEDI provides tools for regional industrial businesses & agriculture producers to succeed! If you would like to be included in JEDI's e-mail list for upcoming seminars & events as well as funding & business resources please e-mail [info@jedialberta.com](mailto:info@jedialberta.com) and follow JEDI on Social Media.

@JEDIALberta

[www.JEDIALberta.com](http://www.JEDIALberta.com)

P: 780.361.6231



JEDI remains open for business and we are committed to supporting our regional businesses during these unprecedented times!

#### COVID-19 Business Resource Website

We have created a website to keep your business up to date with available business resources. As the COVID-19 pandemic situation changes the website will evolve towards a general business resource page.

Be sure to visit the page frequently for the latest updates on business resources and funding opportunities available.

#### Business Retention & Expansion Survey (BRE)

In order to assess the current status of our businesses and identify where JEDI can provide support and resources, we would appreciate your participation in our regional BRE Survey.

#### Celebration of Agriculture in lieu of Ag Forum

Do you have a good news story about a local Ag producer? Please help us celebrate the men & women of Agriculture by sharing their stories!

Visit [www.JEDIALberta.com](http://www.JEDIALberta.com) for more info.

▲ We are committed to supporting our regional businesses during these unprecedented times. CLICK HERE FOR COVID-19 BUSINESS RESOURCES.



COVID-19 BUSINESS RESOURCES   News and Events   About Us   Resources & Data   Contact Us   Q

Site Selection   Investment   Land Development & Real Estate   Regional Business & Agriculture   Industries

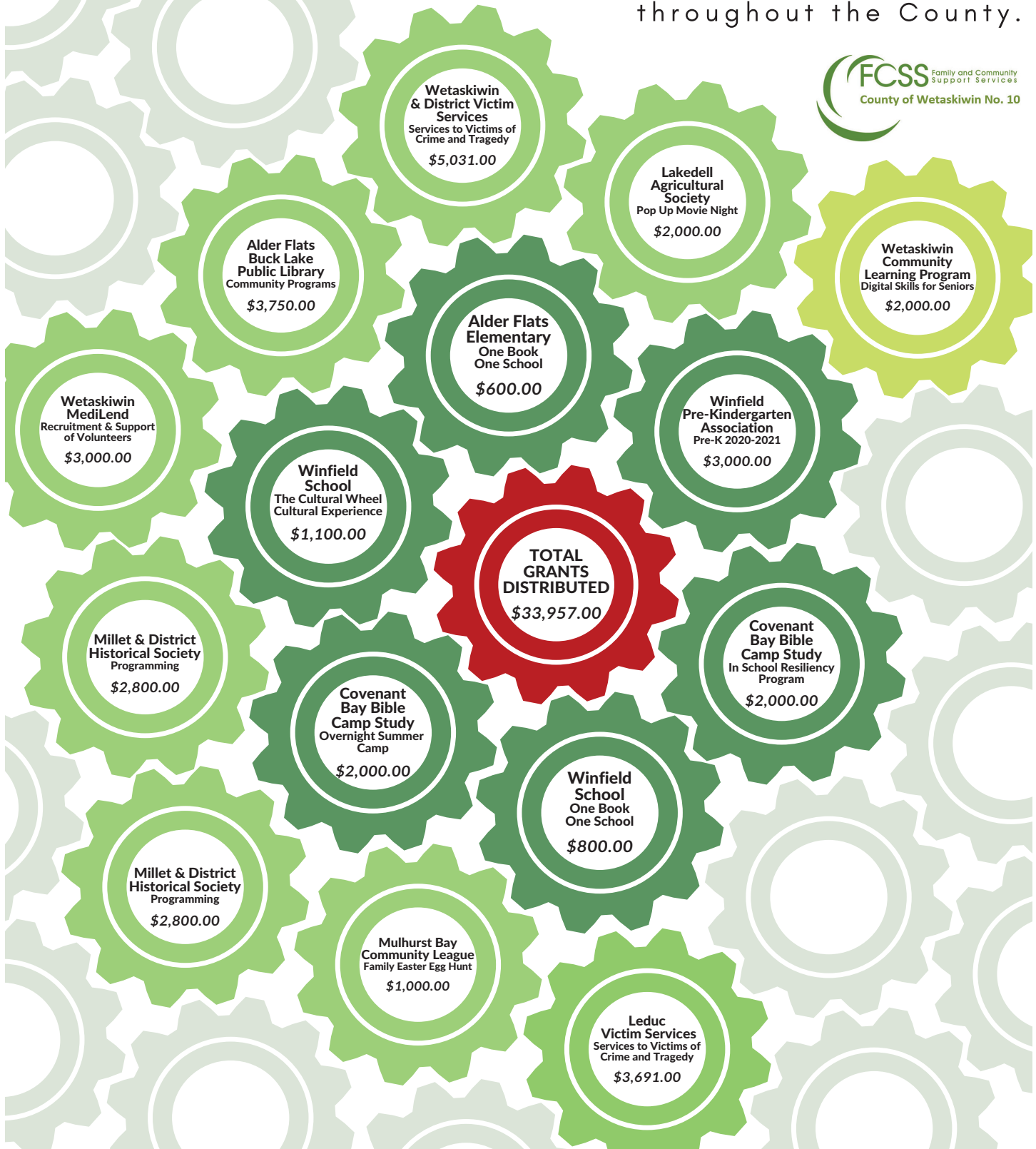
#### COVID-19 BUSINESS RESOURCES





# FAMILY AND COMMUNITY SUPPORT SERVICES

Working to provide, enhance and enrich  
Preventative Programs and Services  
throughout the County.





## 2020 GRANTS

Watch the Pipestone Flyer and [www.county.wetaskiwin.ab.ca](http://www.county.wetaskiwin.ab.ca) for deadlines to apply for grant programs.

The County of Wetaskiwin No. 10 provided the following grants throughout the County in 2020.

| RECREATION ZONE 1                                   |                    |
|-----------------------------------------------------|--------------------|
| Alberta Central Railway Museum Society (Operations) | 1,500.00           |
| Angus Ridge Community Hall Society (Operations)     | 5,600.00           |
| Clear Vista School (Archery Program)                | 3,000.00           |
| Wetaskiwin Ski Club (Utility Assistance)            | 2,816.50           |
| Wetaskiwin Ski Club (Replacement Tow Rope)          | 5,331.50           |
| <b>ZONE 1 TOTAL</b>                                 | <b>\$18,248.00</b> |

| RECREATION ZONE 2                                  |                    |
|----------------------------------------------------|--------------------|
| Falun Community League (Operations)                | 13,532.35          |
| Fletcher Community Association (Operations)        | 1,871.25           |
| Lakedell Agricultural Society (Operations)         | 12,414.16          |
| Lone Ridge Community Hall Association (Operations) | 3,263.28           |
| Mulhurst Bay Community League (Operations)         | 9,196.52           |
| Pipestone Community Society (Operations)           | 9,721.38           |
| Porto Bello Community Society (Operations)         | 5,773.50           |
| Usona Agricultural Society (Operations)            | 10,154.96          |
| <b>ZONE 2 TOTAL</b>                                | <b>\$65,927.40</b> |

| RECREATION ZONE 3                          |                    |
|--------------------------------------------|--------------------|
| Winfield Agricultural Society (Operations) | 11,931.00          |
| <b>ZONE 3 TOTAL</b>                        | <b>\$11,931.00</b> |

| RECREATION ZONE 4                                                           |                    |
|-----------------------------------------------------------------------------|--------------------|
| Alder Flats Community Agricultural Society (Ice Maintenance)                | 1,950.00           |
| Buck Lake Agricultural Society (Janitorial/Utilities/RM Building & Grounds) | 6,765.00           |
| Buck Lake Seniors (Janitorial/Utilities/RM Building & Grounds)              | 3,655.00           |
| <b>ZONE 4 TOTAL</b>                                                         | <b>\$12,370.00</b> |

| CEMETERY OPERATING ASSISTANCE GRANT TO ASSIST WITH MAINTENANCE |          |                                    |                    |
|----------------------------------------------------------------|----------|------------------------------------|--------------------|
| Alder Flats Cemetery                                           | 1,000.00 | Mount Clare Cemetery               | 1,000.00           |
| Bonnie Glen Cemetery                                           | 870.00   | Nashville Cemetery                 | 1,000.00           |
| Bunker Hill Cemetery Club                                      | 930.00   | New Sweden Mission Church Cemetery | 1,000.00           |
| Calvary Baptist Church Cemetery                                | 940.00   | Peace Hills Zion Lutheran Cemetery | 1,000.00           |
| Crooked Lake Cemetery                                          | 1,000.00 | Poplar Valley Cemetery             | 1,000.00           |
| Dalby Cemetery                                                 | 1,000.00 | Roseland Cemetery                  | 900.00             |
| Emmaus Lutheran Cemetery                                       | 1,000.00 | Siegel Hill Cemetery               | 1,000.00           |
| Hegge Community Cemetery                                       | 800.00   | St. John's Lutheran Cemetery       | 1,000.00           |
| Immanuel Lutheran Church Cemetery                              | 510.00   | St. Norbert's Catholic Cemetery    | 600.00             |
| Lakedell Community Cemetery                                    | 1,000.00 | St. Peters Lutheran Cemetery       | 1,000.00           |
| Lone Ridge Community Cemetery                                  | 1,000.00 | Twin Creek Cemetery                | 720.00             |
| Malmo Mission Covenant Church Cemetery                         | 1,000.00 | Vang Lutheran Church Cemetery      | 1,000.00           |
| Maywood Cemetery                                               | 1,000.00 | Waldheim Cemetery                  | 430.00             |
| Millet Community Cemetery                                      | 1,000.00 |                                    |                    |
|                                                                |          | <b>CEMETERY TOTAL</b>              | <b>\$24,700.00</b> |

### LIBRARY GRANTS

|                                      |           |                                      |                     |
|--------------------------------------|-----------|--------------------------------------|---------------------|
| Alder Flats Buck Lake Public Library | 14,275.86 | Lakedell Area Community Library Soc. | 16,631.03           |
| Millet Public Library                | 28,262.06 | Winfield Community Library Assoc.    | 18,986.20           |
| Wetaskiwin Public Library            | 47,103.43 |                                      |                     |
| <b>TOTAL</b>                         |           |                                      | <b>\$125,258.58</b> |

### GRANTS TO CHARITABLE ORGANIZATIONS AND INSTITUTIONS & SOCIETIES

|                                         |          |                                                                                                                         |                    |
|-----------------------------------------|----------|-------------------------------------------------------------------------------------------------------------------------|--------------------|
| Wetaskiwin & District Victim Services   | 7,000.00 | Royal Canadian Legion Remembrance Day Wreaths (Wetaskiwin, Millet, Mulhurst Bay, Ma-Me-O Beach, Winfield & Alder Flats) | 750.00             |
| Farm Safety Centre                      | 2,600.00 | Canadian Fallen Heroes Foundation                                                                                       | 500.00             |
| Canteen Curling Bonspiel                | 150.00   | STARS                                                                                                                   | 11,181.00          |
| Wetaskiwin & County Sports Hall of Fame | 200.00   |                                                                                                                         |                    |
| <b>TOTAL</b>                            |          |                                                                                                                         | <b>\$22,381.00</b> |

### CHAMBER OF COMMERCE GRANTS

|                                                 |                    |
|-------------------------------------------------|--------------------|
| Pigeon Lake Regional Chamber of Commerce        | 10,000.00          |
| Leduc & Wetaskiwin Regional Chamber of Commerce | 7,750.00           |
| <b>TOTAL</b>                                    | <b>\$17,750.00</b> |

### AGRICULTURAL BURSARIES

Agricultural Bursaries of \$1,000.00 each were given to Avery Nelson, Janine Tatlow & Emily Pietsch who are attending post secondary institutions in a faculty relating to Agriculture.

### RECREATION OPERATIONAL FUNDING AGREEMENTS

|                          |                     |
|--------------------------|---------------------|
| City of Wetaskiwin       | 241,941.83          |
| Millet Recreation Centre | 86,800.95           |
| <b>TOTAL</b>             | <b>\$328,742.78</b> |

### 2020 APPROVED MUNICIPAL SUSTAINABILITY INITIATIVE (MSI) PROJECTS

|                                                          |                       |
|----------------------------------------------------------|-----------------------|
| Falun & District Senior Citizens Club Kitchen            | 4,500.00              |
| Alder Flats Community Agricultural Society Skating Arena | 56,000.00             |
| Yeoford Community Centre Kitchen & Dining Hall           | 14,750.00             |
| SCADA Systems Upgrades                                   | 200,000.00            |
| Gravel Road Rehabilitation                               | 558,370.00            |
| Alder Flats Wastewater Line Construction                 | 1,104,121.00          |
| Mulhurst Lutheran Church Campground Shower House         | 50,000.00             |
| <b>TOTAL</b>                                             | <b>\$1,987,741.00</b> |



**OPTION PAY**

**\*NEW\***

Now Accepting Online Credit Card Payments



The County of Wetaskiwin is pleased to announce that we are now accepting payments using select credit cards through the OptionPay system. OptionPay is a payment card system with a tiered fee schedule, starting with a minimum fee of \$2.00 per transaction.

If you would like to learn more about this new option, call the County Office at 780-352-3321 or read about it online at: [www.county.wetaskiwin.ab.ca](http://www.county.wetaskiwin.ab.ca)

**Effective Immediately  
FCSS Services have been  
relocated from  
Winfield to the  
Main County Office.  
For all inquiries  
please call  
780-352-3321 ext. 2292**



# COMMUNICATION SURVEY 2020

In our efforts to improve how we engage and communicate with residents, we are distributing this survey and would value your feedback. We want to hear your thoughts on what County information you want to know and how we can provide it.

Below is a survey that can be completed in 5 minutes. Your responses are confidential and will be used to ensure your opportunities to connect with and hear from the County are meaningful and helpful.

Please fill out the survey below and return it to: Naomi Finseth, Communications Officer, Email [nfinseth@county10.ca](mailto:nfinseth@county10.ca) or mail: Box 6960 Wetaskiwin, AB T9A 2G5 or complete this survey online at [www.county.wetaskiwin.ab.ca](http://www.county.wetaskiwin.ab.ca).

## 1. Which of the following sources do you currently use to stay informed about the County of Wetaskiwin?

(Please check all that apply)

- ☐ County Website
- ☐ County News Flash/ Alerts (email or text message)
- ☐ County Facebook Page
- ☐ Pipestone Flyer Newspaper
- ☐ County Newsletter (mailed semi-annually to local residents via unaddressed admail)
- ☐ Annual Information Flyer (mailed with Transfer Station Card)
- ☐ Visit County Office
- ☐ Contacting County Staff
- ☐ Contacting County Councillors
- ☐ Open Houses/ Public Engagements
- ☐ Word of Mouth

## 3. What County topics would you like to receive more information about?

- |                                             |                                                 |
|---------------------------------------------|-------------------------------------------------|
| <input type="checkbox"/> Council Meetings   | <input type="checkbox"/> Upcoming Events        |
| <input type="checkbox"/> Municipal Budget   | <input type="checkbox"/> Parks & Recreation     |
| <input type="checkbox"/> Public Engagements | <input type="checkbox"/> Enforcement            |
| <input type="checkbox"/> Road Closures      | <input type="checkbox"/> Fire Bans              |
| <input type="checkbox"/> Road Construction  | <input type="checkbox"/> Emergency Services     |
| <input type="checkbox"/> Snow Removal       | <input type="checkbox"/> Agricultural Services  |
| <input type="checkbox"/> Transfer Stations  | <input type="checkbox"/> Planning & Development |
| <input type="checkbox"/> Weed Control       | <input type="checkbox"/> Economic Development   |

## 2. Are there other methods you would like the County to use to communicate and engage with you?

- ☐ Town Hall Meetings
- ☐ Public Engagements
- ☐ Coffee with Council
- ☐ Online streaming of Council Meetings
- ☐ Other Social Media Platforms
- ☐ Electronic Newsletter
- ☐ Podcasting
- ☐ Other (please list below):

## 4. Where do you live in the County?

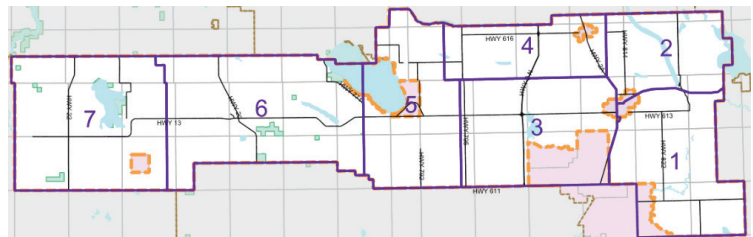
- ☐ Division 1
- ☐ Division 2
- ☐ Division 3
- ☐ Division 4
- ☐ Division 5
- ☐ Division 6
- ☐ Division 7

## 5. Which of the following age groups applies to you?

- ☐ 18-34
- ☐ 35-44
- ☐ 45-54
- ☐ 55-64
- ☐ 65 or older

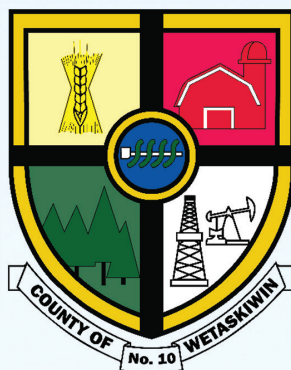
## Would you like to receive County Alerts?

Sign-up online at:  
<https://www.county.wetaskiwin.ab.ca/list.aspx>  
 or  
 email: [nfinseth@county10.ca](mailto:nfinseth@county10.ca)  
 call: 780-361-6220  
 to be added





County of Wetaskiwin No. 10  
Box 6960  
Wetaskiwin, AB  
T9A 2G5  
Physical Address: 243019A Hwy 13



Phone: 780-352-3321  
Toll Free: 1-800-661-4125  
Fax: 780-352-3486  
[www.county.wetaskiwin.ab.ca](http://www.county.wetaskiwin.ab.ca)

# STAFF DIRECTORY

Main Office/General Inquiries  
780-352-3321 or 1-800-661-4125

Public Works Call Centre  
780-361-6241

Complaint and After Hours Dispatch  
780-352-0005 or 1-800-665-0338

**Rod Hawken**, Chief Administrative Officer  
(CAO)  
[rhawken@county10.ca](mailto:rhawken@county10.ca)  
780-361-6225

**Jeff Chipley**, Assistant CAO  
[jchipley@county10.ca](mailto:jchipley@county10.ca)  
780-361-6223

**Eric Hofbauer**, Director of Finance  
[ehofbauer@county10.ca](mailto:ehofbauer@county10.ca)  
780-352-3321 Ext. 6228

**Neil Powell**, Director of Public Works  
[npowell@county10.ca](mailto:npowell@county10.ca)

**Brian Anderson**, Manager of Operations  
[banderson@county10.ca](mailto:banderson@county10.ca)

**Steve Majek**, Director of Agricultural  
Services  
[smajek@county10.ca](mailto:smajek@county10.ca)  
780-361-6226

**Geoff Lynch**, Director of Leisure &  
Community Services  
[glynch@county10.ca](mailto:glynch@county10.ca)  
780-352-3321 Ext. 6227

**Erin Ballhorn**, Community Development  
Coordinator  
[eballhorn@county10.ca](mailto:eballhorn@county10.ca)  
780-352-3321 Ext. 2292

**David Blades**, Director of Planning &  
Economic Development  
[dblades@county10.ca](mailto:dblades@county10.ca)  
780-352-3321 Ext. 6235

**René Boutin**, Director of Assessment Services  
[rboutin@county10.ca](mailto:rboutin@county10.ca)  
780-352-3321 Ext. 6233

**Mike Zajac**, Director of Emergency Services  
[mzajac@county10.ca](mailto:mzajac@county10.ca)  
780-352-3321 Ext. 6240

**Lynn Weed**, Director of Information Services  
[lweed@county10.ca](mailto:lweed@county10.ca)  
780-352-3321

**Naomi Finseth**, Communications Officer  
[nfinseth@county10.ca](mailto:nfinseth@county10.ca)  
780-352-3321 Ext. 6220