

County of Wetaskiwin No. 10 Municipal Policy

Department:

12.0 Corporate Services

Policy No.

12.0.5

Title Organizational Chart

1. Policy Statement:

1.1. The County believes it appropriate that all employees be provided with a clear understanding of the chain of authority within the structure of the County.

2. Responsibilities:

2.1. The CAO will review and implement the changes to the Organizational Chart, as approved by Council, through employee attrition.

3. Guidelines:

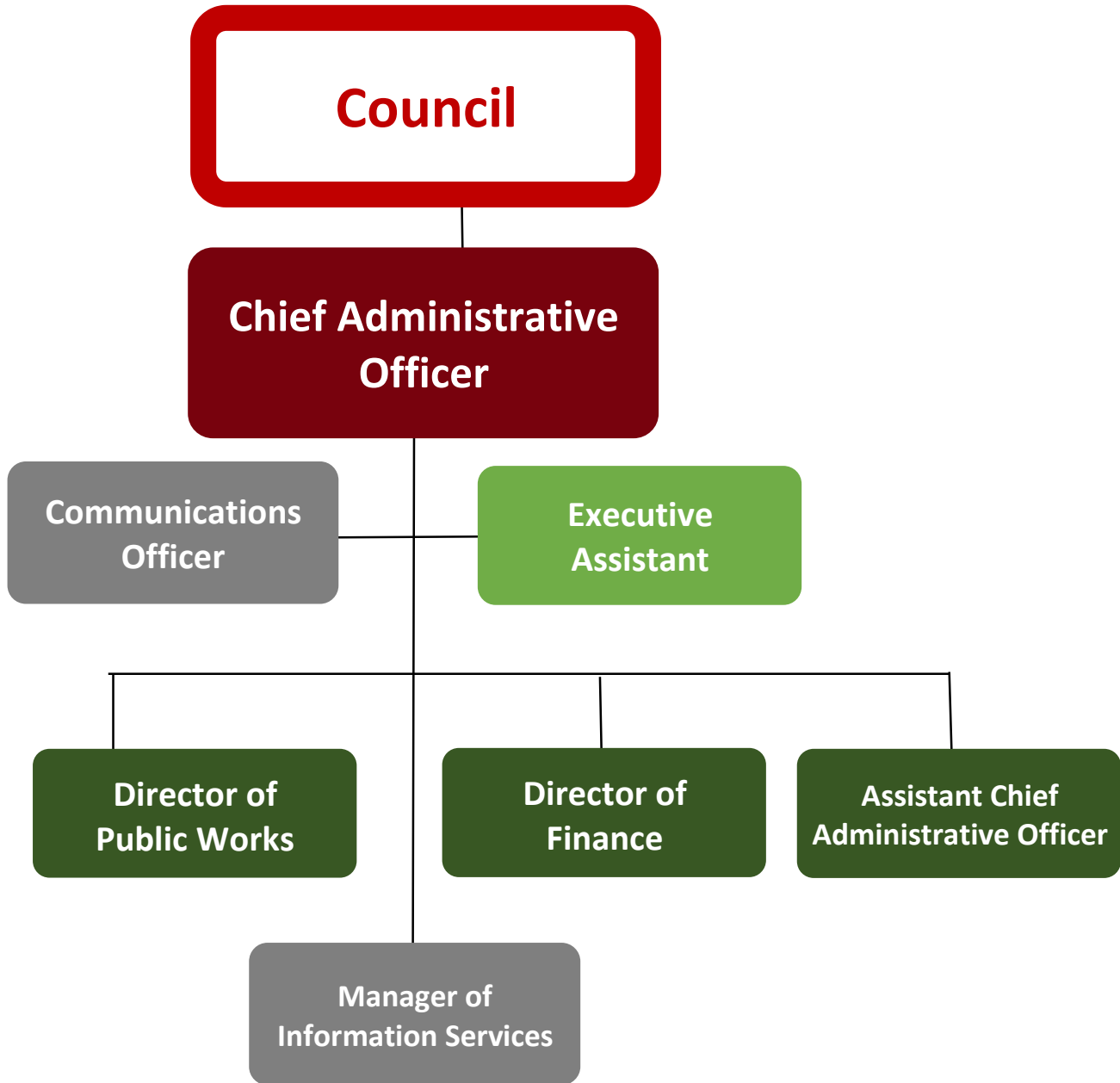
3.1. The attached Organizational Chart outlines the flow of the employees within the County.

3.2. All positions, unless otherwise noted, are 1.0 FTE.

Administrative Review	Policy Committee	Council Revised	Council Approved	Page
n/a	April 20, 2023	CG20220614.023 CG20230508.021	CG20200728.006	1 of 16

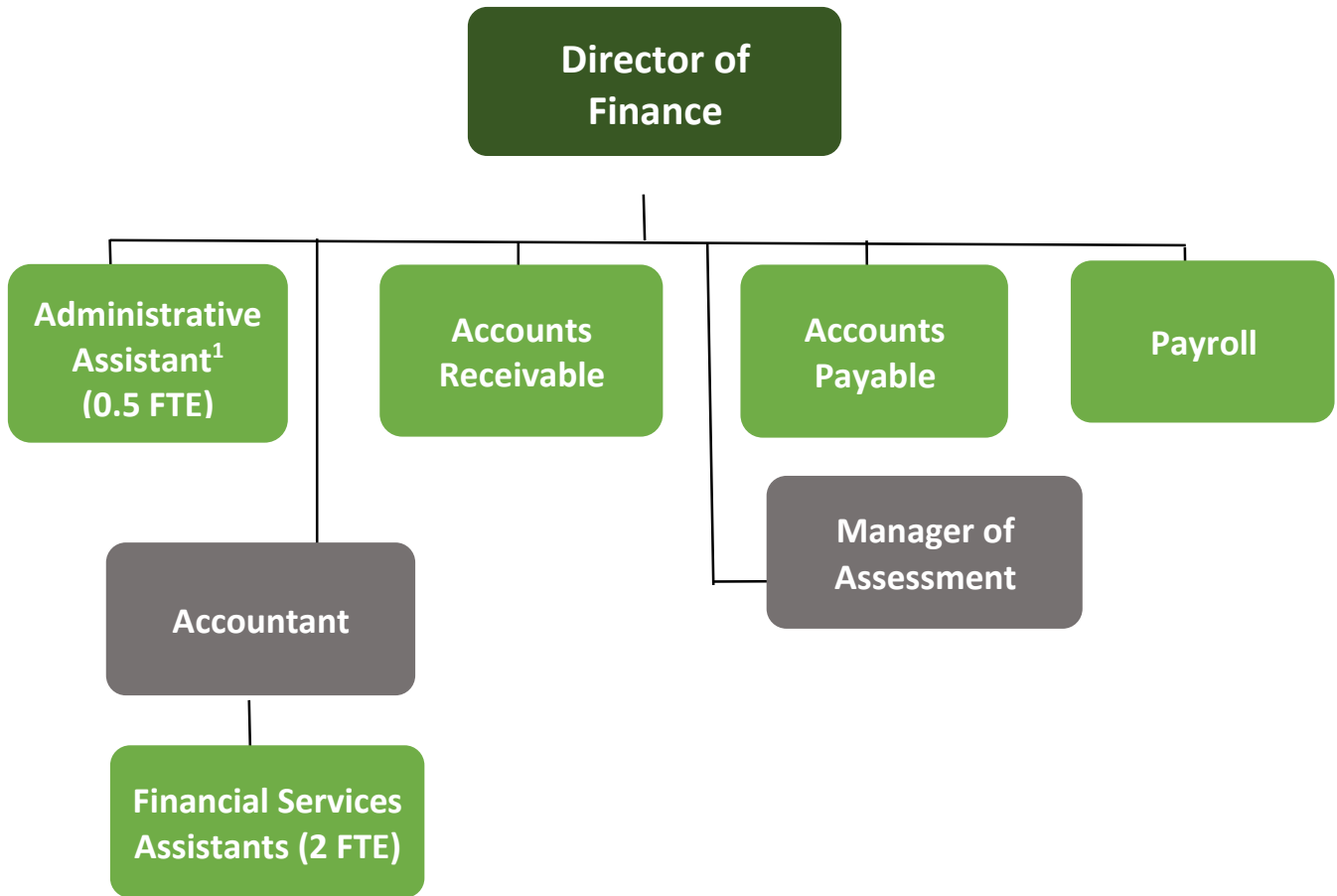
County of Wetaskiwin No. 10 Municipal Policy		
Department: 12.0 Corporate Services	Policy No. 12.0.5	Title Organizational Chart

Schedule "A"



Administrative Review	Policy Committee	Council Revised	Council Approved	Page
n/a	April 20, 2023	CG20220614.023 CG20230508.021	CG20200728.006	2 of 16

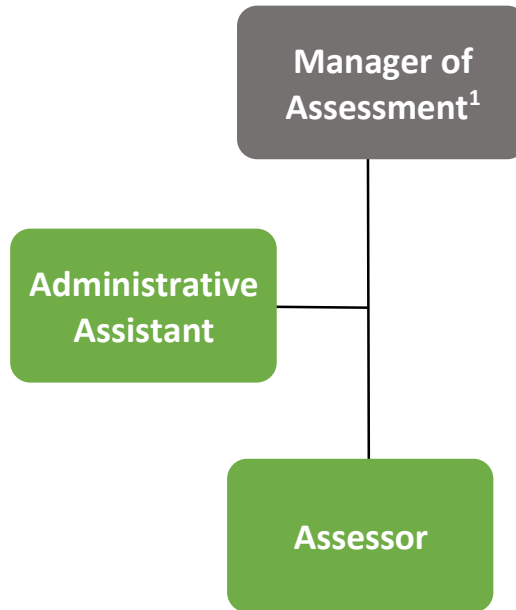
County of Wetaskiwin No. 10 Municipal Policy		
Department:	Policy No.	Title
12.0 Corporate Services	12.0.5	Organizational Chart



¹Shared position with Agricultural Services

Administrative Review	Policy Committee	Council Revised	Council Approved	Page
n/a	April 20, 2023	CG20220614.023 CG20230508.021	CG20200728.006	3 of 16

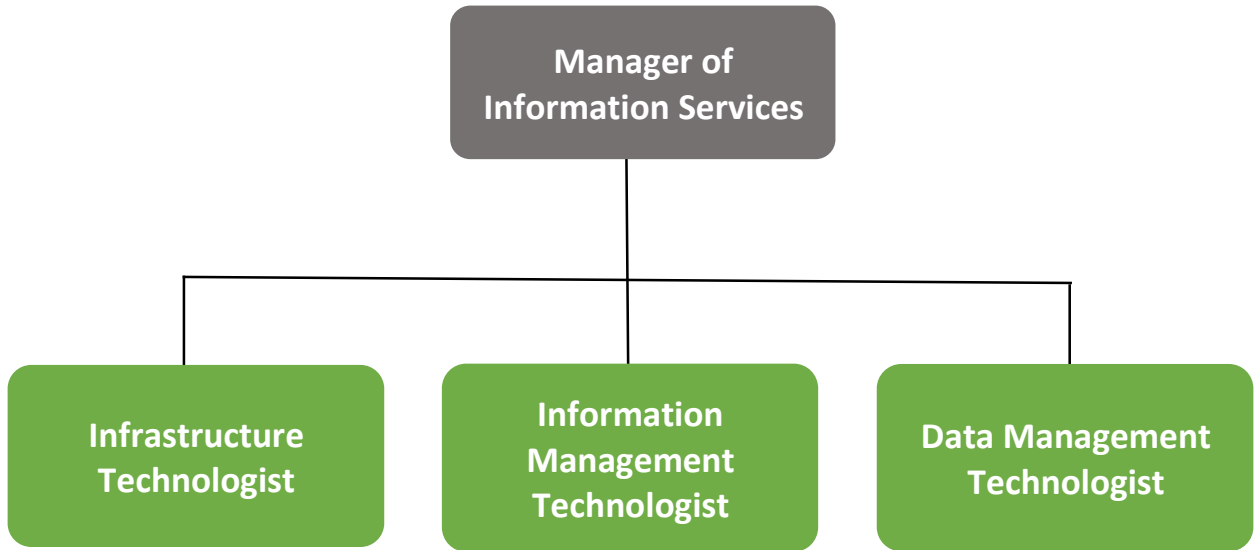
County of Wetaskiwin No. 10 Municipal Policy		
Department: 12.0 Corporate Services	Policy No. 12.0.5	Title Organizational Chart



¹Currently Director of Assessment (2020)

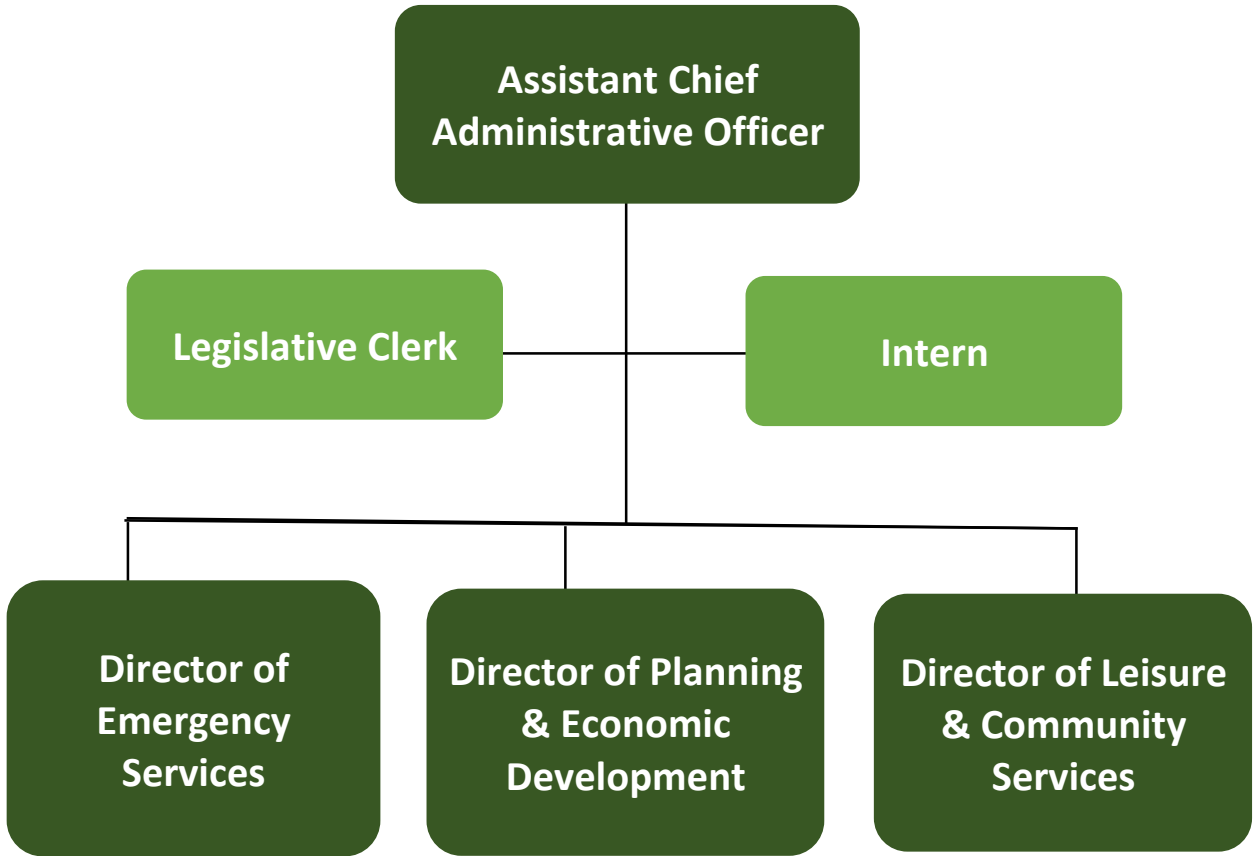
Administrative Review	Policy Committee	Council Revised	Council Approved	Page
n/a	April 20, 2023	CG20220614.023 CG20230508.021	CG20200728.006	4 of 16

County of Wetaskiwin No. 10 Municipal Policy		
Department:	Policy No.	Title
12.0 Corporate Services	12.0.5	Organizational Chart



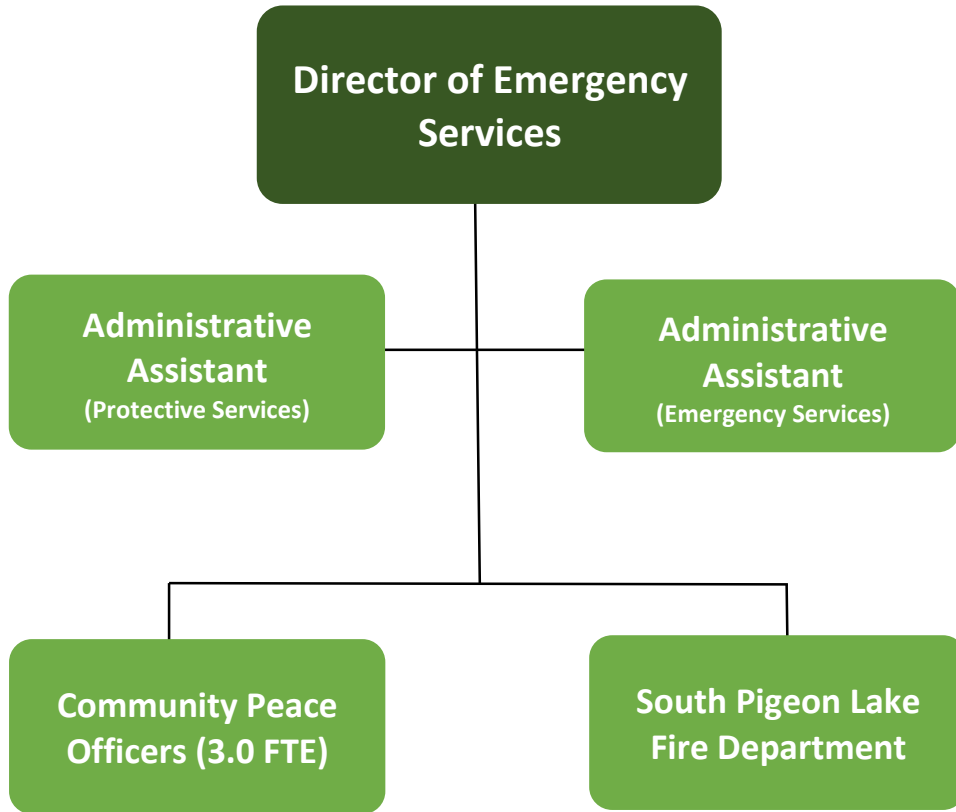
Administrative Review	Policy Committee	Council Revised	Council Approved	Page
n/a	April 20, 2023	CG20220614.023 CG20230508.021	CG20200728.006	5 of 16

County of Wetaskiwin No. 10 Municipal Policy		
Department: 12.0 Corporate Services	Policy No. 12.0.5	Title Organizational Chart



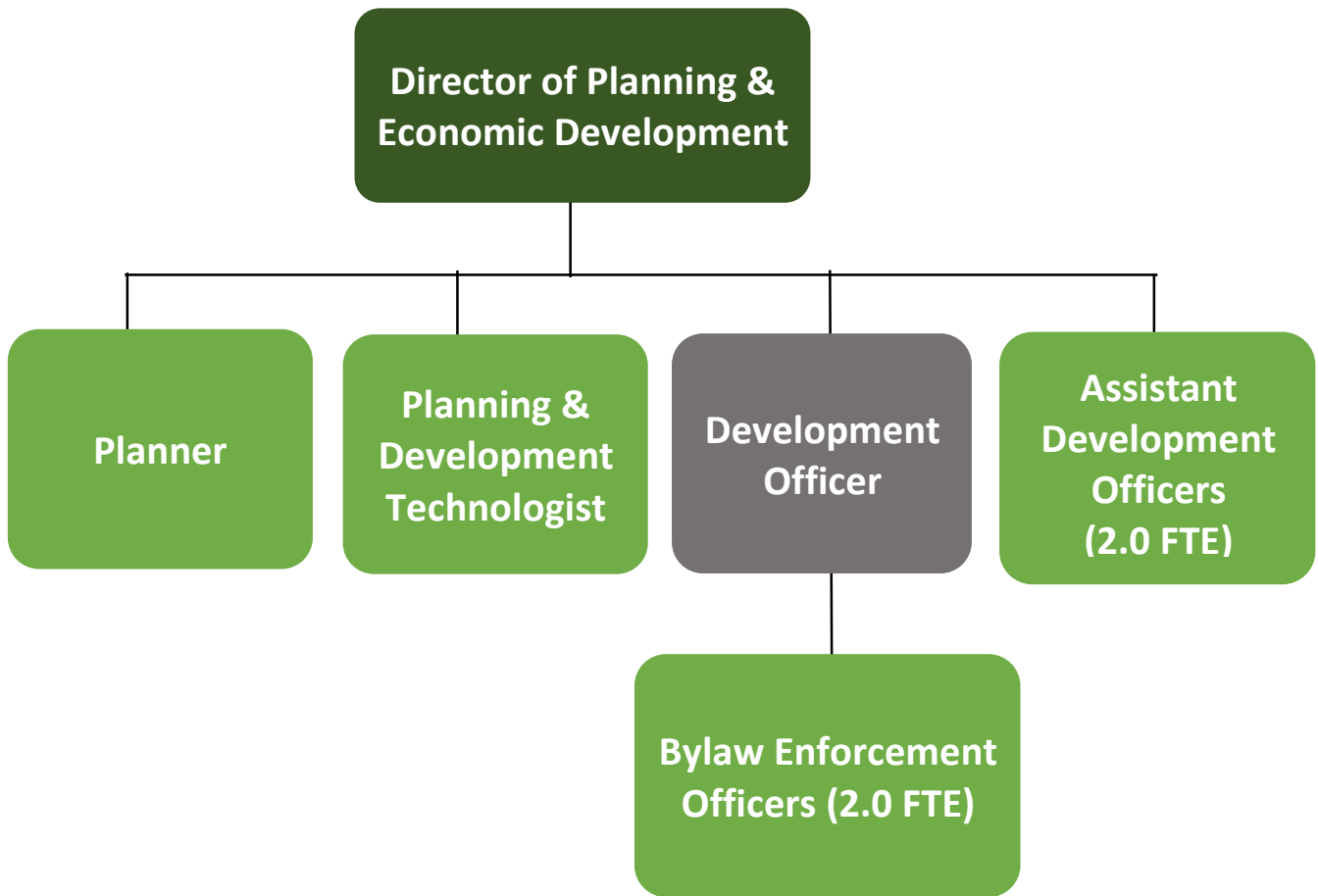
Administrative Review	Policy Committee	Council Revised	Council Approved	Page
n/a	April 20, 2023	CG20220614.023 CG20230508.021	CG20200728.006	6 of 16

County of Wetaskiwin No. 10 Municipal Policy		
Department: 12.0 Corporate Services	Policy No. 12.0.5	Title Organizational Chart



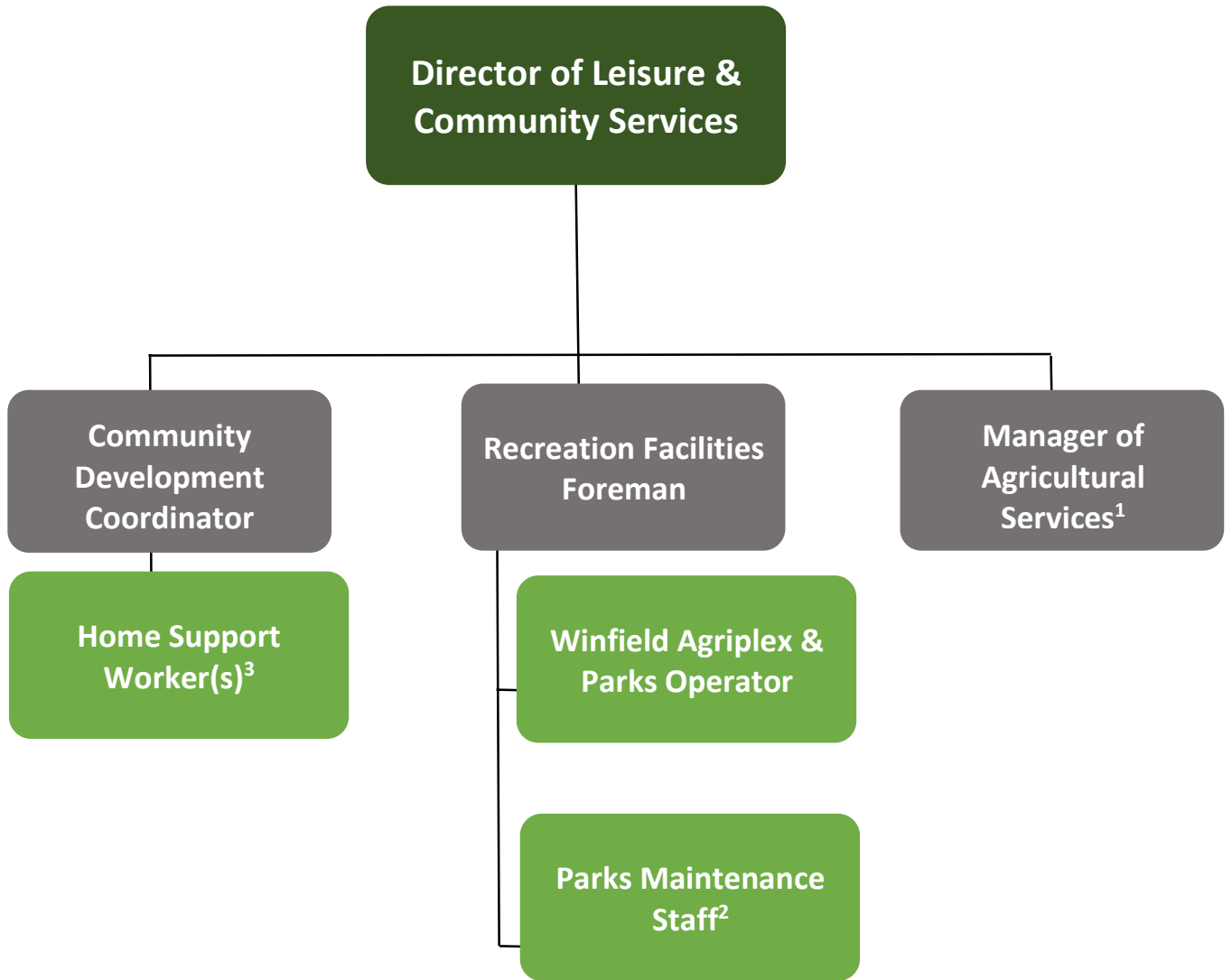
Administrative Review	Policy Committee	Council Revised	Council Approved	Page
n/a	April 20, 2023	CG20220614.023 CG20230508.021	CG20200728.006	7 of 16

County of Wetaskiwin No. 10 Municipal Policy		
Department: 12.0 Corporate Services	Policy No. 12.0.5	Title Organizational Chart



Administrative Review	Policy Committee	Council Revised	Council Approved	Page
n/a	April 20, 2023	CG20220614.023 CG20230508.021	CG20200728.006	8 of 16

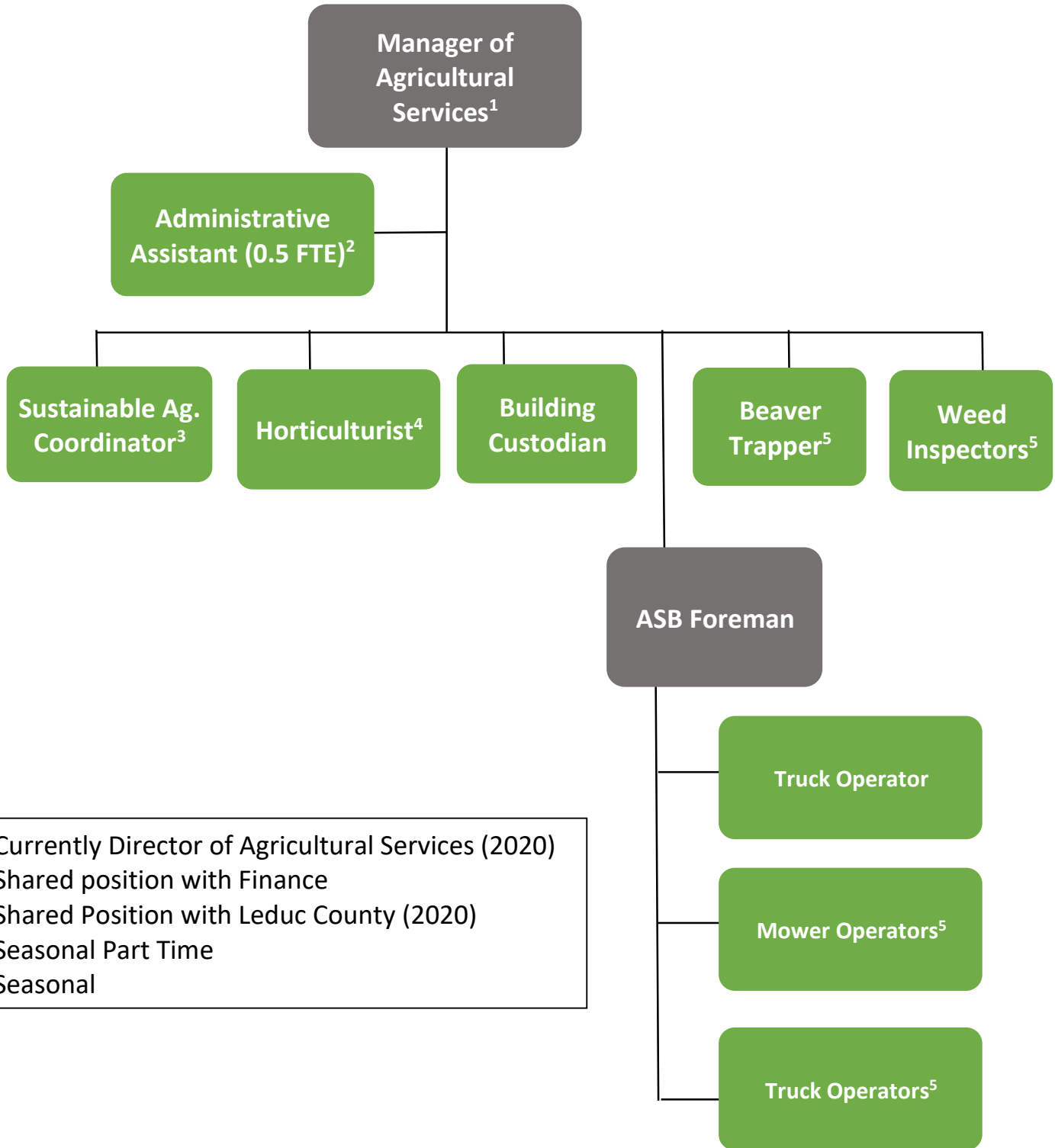
County of Wetaskiwin No. 10 Municipal Policy		
Department:	Policy No.	Title
12.0 Corporate Services	12.0.5	Organizational Chart



¹Currently Director of Agricultural Services (2020)
²Seasonal
³Casual

Administrative Review	Policy Committee	Council Revised	Council Approved	Page
n/a	April 20, 2023	CG20220614.023 CG20230508.021	CG20200728.006	9 of 16

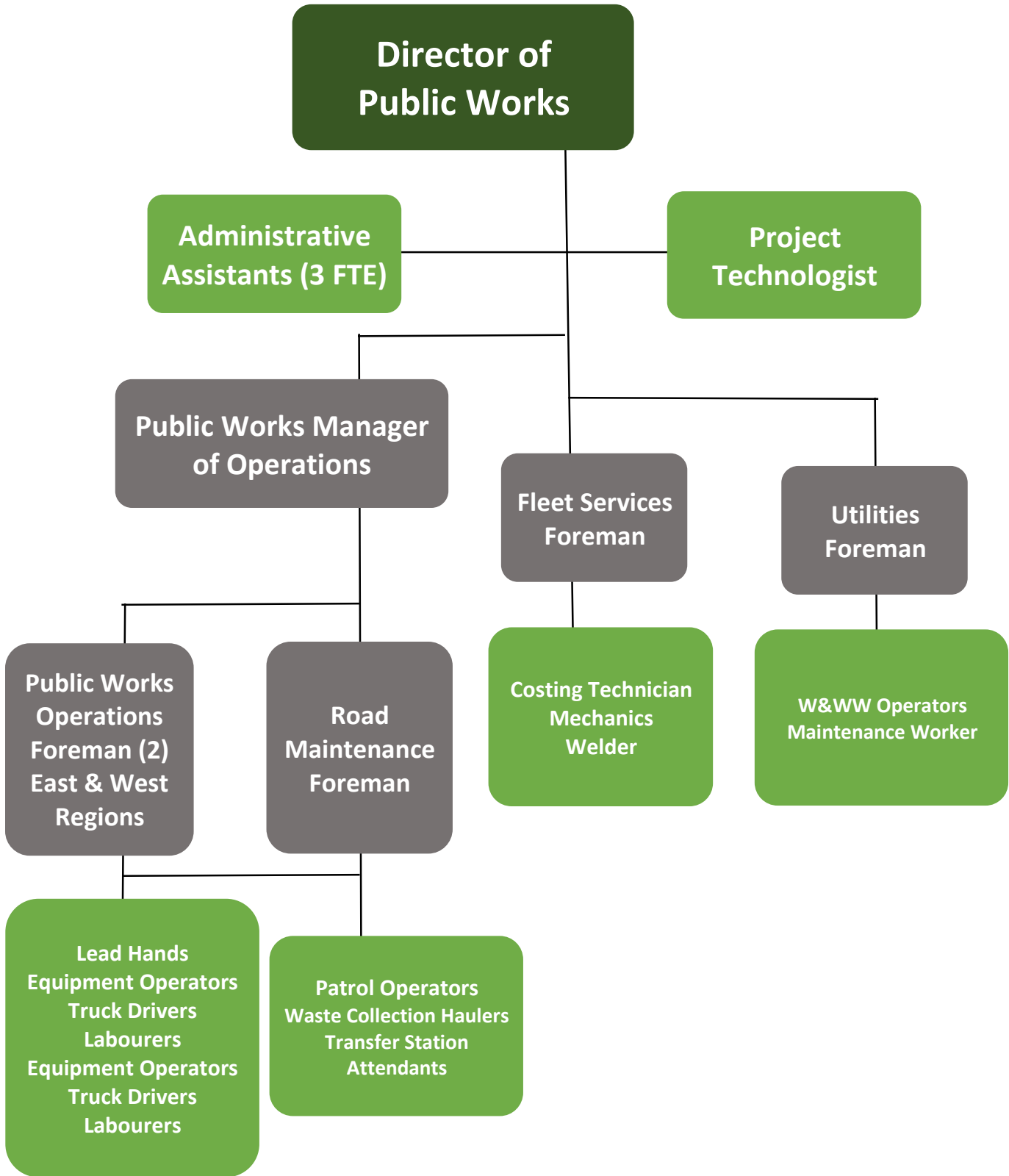
County of Wetaskiwin No. 10 Municipal Policy		
Department:	Policy No.	Title
12.0 Corporate Services	12.0.5	Organizational Chart



¹Currently Director of Agricultural Services (2020)
²Shared position with Finance
³Shared Position with Leduc County (2020)
⁴Seasonal Part Time
⁵Seasonal

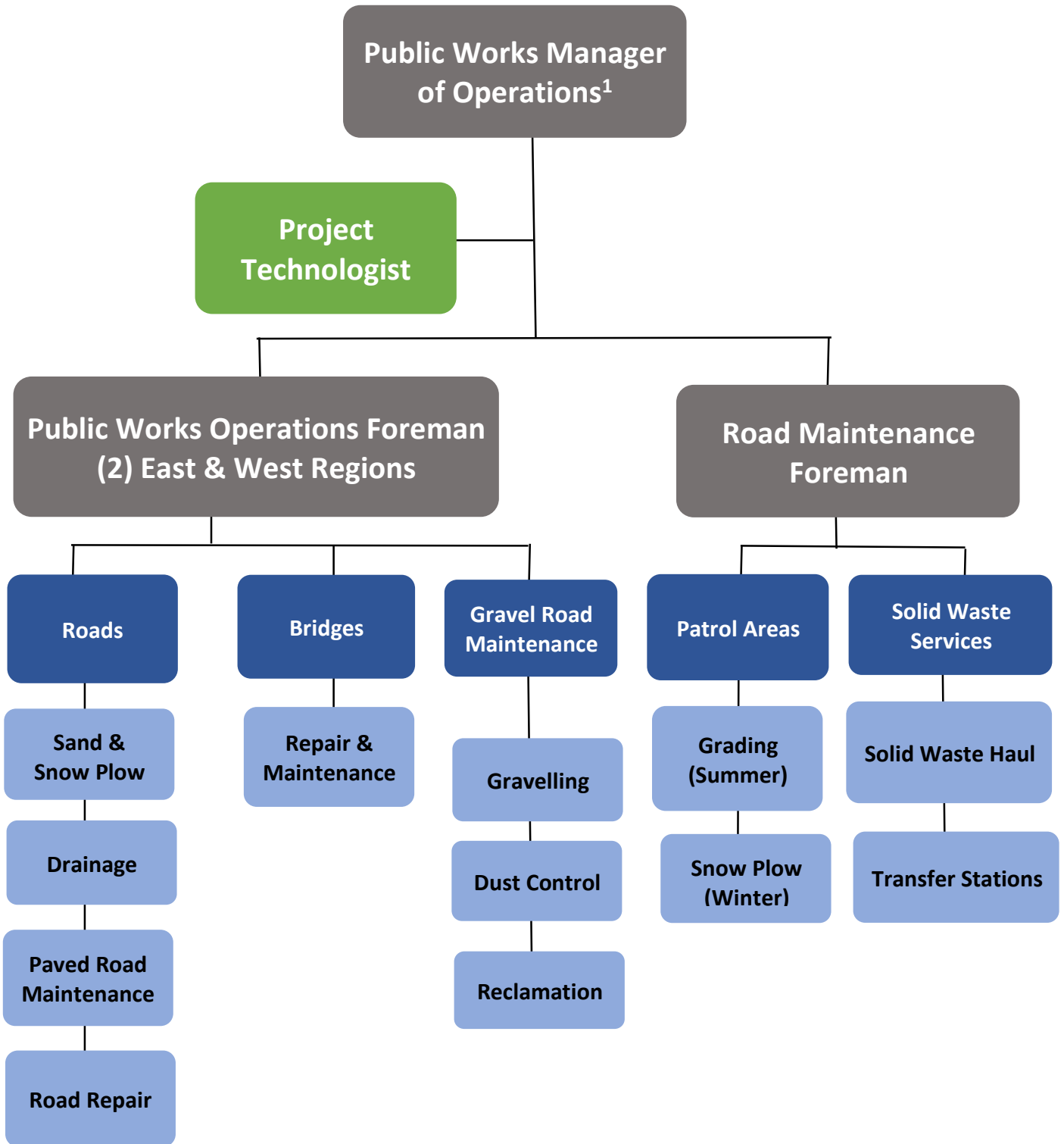
Administrative Review	Policy Committee	Council Revised	Council Approved	Page
n/a	April 20, 2023	CG20220614.023 CG20230508.021	CG20200728.006	10 of 16

County of Wetaskiwin No. 10 Municipal Policy		
Department: 12.0 Corporate Services	Policy No. 12.0.5	Title Organizational Chart



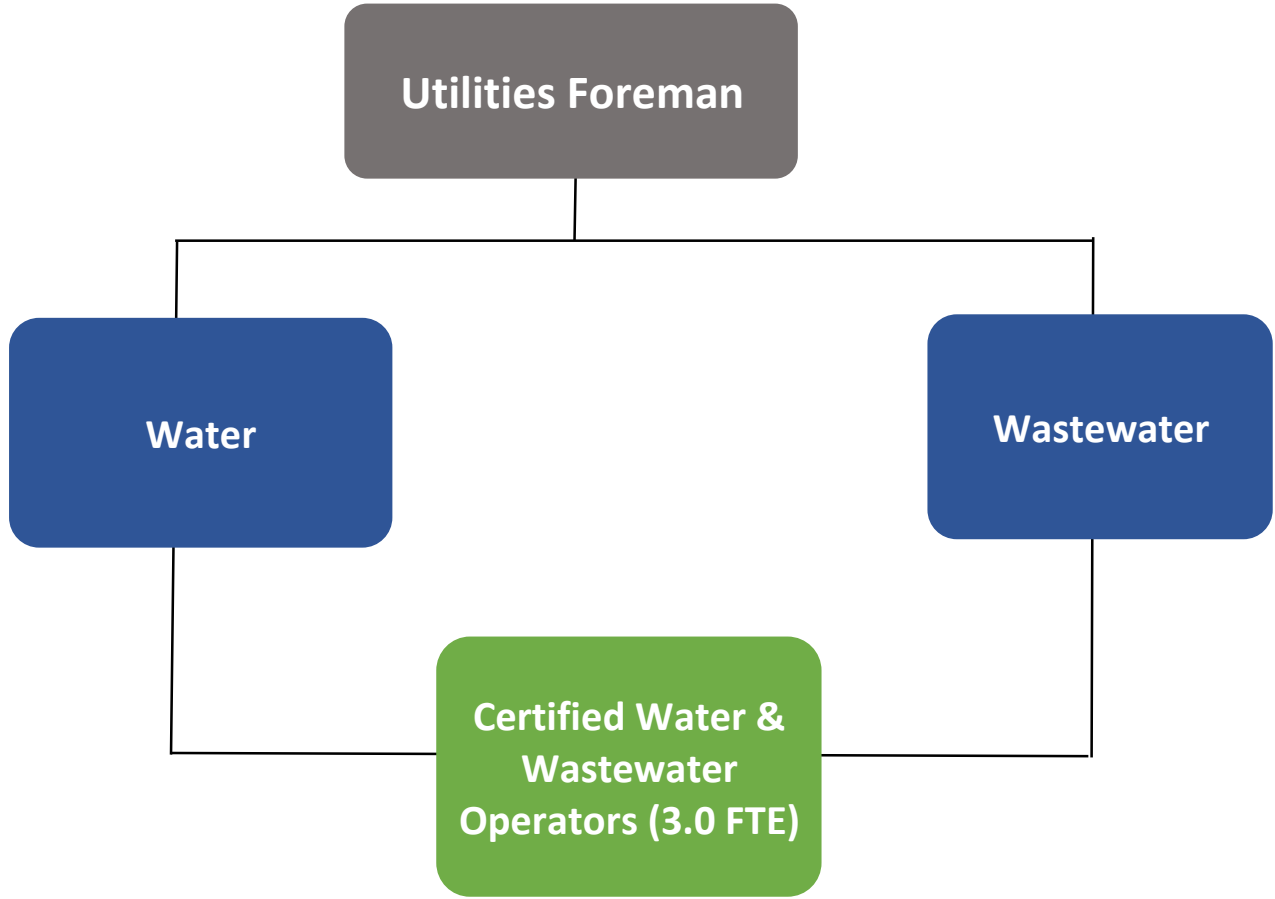
Administrative Review	Policy Committee	Council Revised	Council Approved	Page
n/a	April 20, 2023	CG20220614.023 CG20230508.021	CG20200728.006	11 of 16

County of Wetaskiwin No. 10 Municipal Policy		
Department:	Policy No.	Title
12.0 Corporate Services	12.0.5	Organizational Chart



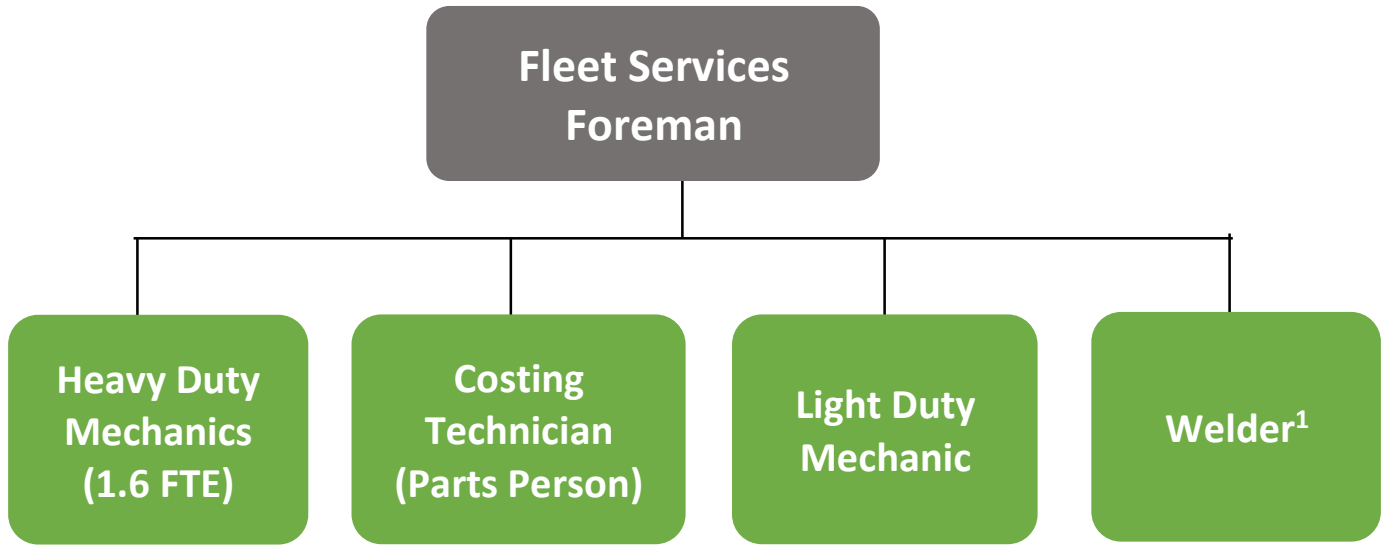
Administrative Review	Policy Committee	Council Revised	Council Approved	Page
n/a	April 20, 2023	CG20220614.023 CG20230508.021	CG20200728.006	12 of 16

County of Wetaskiwin No. 10 Municipal Policy		
Department:	Policy No.	Title
12.0 Corporate Services	12.0.5	Organizational Chart



Administrative Review	Policy Committee	Council Revised	Council Approved	Page
n/a	April 20, 2023	CG20220614.023 CG20230508.021	CG20200728.006	13 of 16

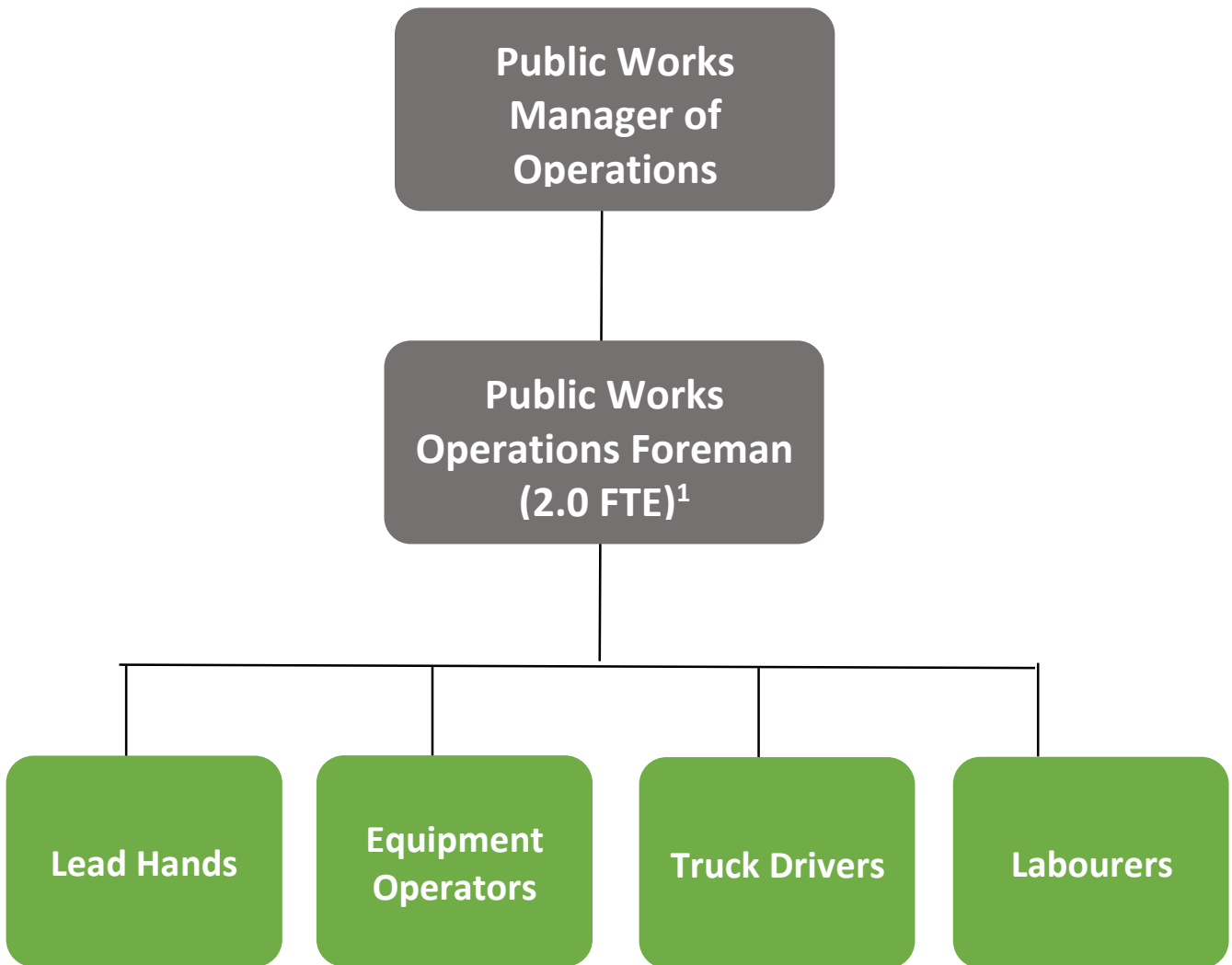
County of Wetaskiwin No. 10 Municipal Policy		
Department: 12.0 Corporate Services	Policy No. 12.0.5	Title Organizational Chart



¹Currently Shop Hand (2020)

Administrative Review	Policy Committee	Council Revised	Council Approved	Page
n/a	April 20, 2023	CG20220614.023 CG20230508.021	CG20200728.006	14 of 16

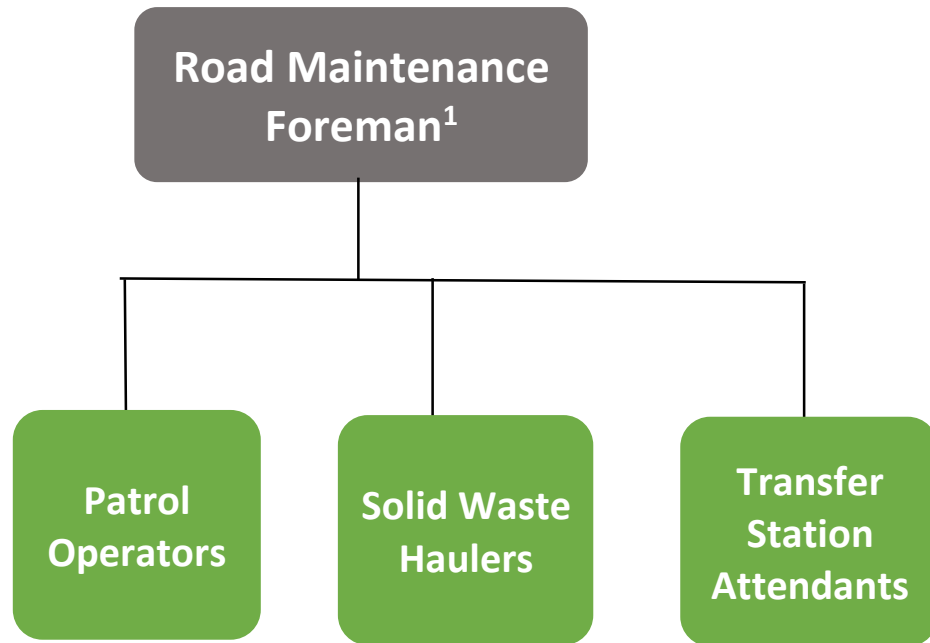
County of Wetaskiwin No. 10 Municipal Policy		
Department: 12.0 Corporate Services	Policy No. 12.0.5	Title Organizational Chart



¹Operations and Road Maintenance Foreman will share the positions of Equipment Operator, Truck Driver and Labourers according to Work Plans

Administrative Review	Policy Committee	Council Revised	Council Approved	Page
n/a	April 20, 2023	CG20220614.023 CG20230508.021	CG20200728.006	15 of 16

County of Wetaskiwin No. 10 Municipal Policy		
Department: 12.0 Corporate Services	Policy No. 12.0.5	Title Organizational Chart



¹Operations and Road Maintenance Foreman will share the positions of Equipment Operator, Truck Driver and Labourers according to Work Plans

Administrative Review	Policy Committee	Council Revised	Council Approved	Page
n/a	April 20, 2023	CG20220614.023 CG20230508.021	CG20200728.006	16 of 16