



## Pasture rejuvenation

Pasture rejuvenation uses different methods — either alone or combined — to boost productivity by improving the nutrient quality and yield of forage crops. This article focuses on tame pastures and rejuvenation through methods other than break and reseed.

How do we know it's time to rejuvenate a pasture? Examine pasture composition — if legumes have reduced to less than one plant per square foot, it may be time to act.

### *What options can be reflected on*

- ▶ Grazing management should be the first technique considered. Often, rest alone can be an effective tool. Some reports estimate a 25 to 35 per cent increase in pasture productivity can be achieved by increasing paddocks and allowing for enough rest between grazes.
- ▶ Winter feeding on forage stands can add nutrients and boost production.
- ▶ Fertilization and pH amendments are options if there is

a sufficient quality of desired plants remaining in the stand. A soil test is essential to determine which nutrients are available and which may be deficient.

- ▶ Direct seeding into sod or over-seeding the existing stand with desirable forages.

More in depth information on this topic can be found at [www.beefresearch.ca/topics/rejuvenation-of-hay-pasture/](http://www.beefresearch.ca/topics/rejuvenation-of-hay-pasture/)

Some of these methods can be costly, and soil moisture is the most important variable, which we have no control over. This can make some rejuvenation options risky, but there's good news! There are On Farm Climate Action Plan (OFCAF) programs in Alberta that can assist producers in establishing advanced grazing infrastructure, developing grazing plans and assisting with costs of seeding into existing stands. Check out the producer grant programs article on page 3 or contact the sustainable agriculture coordinator at **780-387-6182**.

## New management recommendations for berries

### **Saskatoons, haskap, raspberry, sour cherry and strawberry**

Join us this fall for a two-part series as Forrest Scharff, Fruit Specialist with Saskatchewan Agriculture, talks about new management practices for pruning, orchard renovation and strawberry production.

- ▶ **Dates:** Nov. 26 and Dec. 3
- ▶ **Time:** 7 to 8:30 p.m.
- ▶ **Location:** online via Zoom
- ▶ **Register:** register for this **free** event online at [www.leduc-county.com/dig-into-horticulture-series](http://www.leduc-county.com/dig-into-horticulture-series).

*Please note: registration closes two days before each event.*

# Putting it all together

A combined workshop and field tour were held in the County of Wetaskiwin in spring 2025 — starting at the Wetaskiwin Ag Society grounds and finishing at local producer Ken McGladrie's farm. The event was called *Across the field: Strategies for Pasture Management through Grazing*, and was organized by the sustainable agriculture program and the Central Alberta Forage and Livestock Association (CAFLA).

Ken is a life-long learner with a passion for agriculture and sharing his experiences. He has embraced opportunities over the years, including recent projects with ALUS Wetaskiwin-Leduc and the On Farm Climate Action Fund (OFCAF) through Results-Driven Agriculture Research (RDAR).

During the workshop, the 33 participants learned about different grant and program options, received a market cattle update from Lee Irving with ATB, heard from keynote Albert Kuipers, a well-respected voice in adaptive grazing management, and finished with an interview-style session with Ken. The field tour followed, where Ken organized a bus to drive participants to recent projects, which included:

- ▶ Riparian fencing
- ▶ Advanced rotational grazing
  - ▶ Multiple paddocks
  - ▶ Watering systems
- ▶ Pasture improvement by adding legumes

A detailed article on the day was produced in the August 2025 issue of The Blade, a CAFLA magazine, available online at [cafla-ab.ca](https://cafla-ab.ca).



Waterer



Shallow, buried water infrastructure

## Alberta Environmental Farm Plan

The voluntary and **free** Environmental Farm Plan (EFP) helps farmers highlight their commitment to the land. The program covers an entire farm using a self-assessment tool to help the producer identify on-farm environmental risks. At the completion of the program, the farmer has an itemized list of improvements that can be made in their operation. Each EFP expires after a decade, at which time easily renewing the plan through the WebBook will keep the farm's EFP certificate current.



- ▶ Wetaskiwin and Leduc County's sustainable agriculture coordinator is a trained EFP technician that can help with the process? Contact Kim for more information at **780-387-6182**



### By farmers, for farmers

Free tools to reduce input costs, boost productivity and profitability, and improve soil health.



Join the free FaRM Learning Hub:  
[farmlearninghub.ca](https://farmlearninghub.ca)



# Producer grant funding

## Sustainable Canadian Agricultural Partnership

The Sustainable Canadian Agricultural Partnership (S-CAP) supports farmers and ranchers with cost-shared grant programs. Stay informed by subscribing to S-CAP program updates from their website. The website has an overview of programs available, applicant eligibility and whether applications are being accepted. Learn more at [www.alberta.ca/sustainable-cap-programs](http://www.alberta.ca/sustainable-cap-programs).

## Alberta VBP+ Incentive program

- ▶ Available to VBP+ trained or audited producers, with different funding streams for each.
- ▶ Wide range of improvements supported, including VBP+ initial audits or recertification audits.

Learn more at [www.abpdaily.com/alberta-vbplus-incentive/](http://www.abpdaily.com/alberta-vbplus-incentive/)

## On-Farm Climate Action Fund

### Results Driven Agricultural Research (RDAR)

- ▶ Reopened to receive applications on Aug. 1 after a short intake pause.
- ▶ Approved projects must be implemented in the same year applied for.

- ▶ Program focuses on nitrogen management, cover cropping and rotational grazing practices.

Learn more at [rdar.ca/funding-opportunities/ofcaf](http://rdar.ca/funding-opportunities/ofcaf)

### Canadian Forage and Grasslands Association (CFGa)

- ▶ Next project application intake is from April 1 to 30.
- ▶ Applications for developing a rotational grazing plan with a mentor will be accepted all year. Get ready for the next project intake period!
- ▶ Program focus is rotational grazing practices and pasture improvement.

Learn more at [canadianfga.ca/en/projects/ofcaf-funding](http://canadianfga.ca/en/projects/ofcaf-funding)

### Canada Organic Trade Association and EcoCert Canada

COTA has partnered with EcoCert to deliver the On-Farm Climate Action Fund to help organic farmers implement specific beneficial management practices (BMP).

To learn more, visit [www.canada-organic.ca/en/what-we-do/market-access/farm-climate-action-fund](http://www.canada-organic.ca/en/what-we-do/market-access/farm-climate-action-fund).

- ▶ **Remember!** The County's sustainable agriculture program coordinator can assist local producers with applications. Reach out to Kim at [kim@leduc-county.com](mailto:kim@leduc-county.com) or 780-387-6182 for help.

## Nitrogen beneficial management practices (BMPs)

On Farm Climate Action Fund (OFCaF) supports specific nitrogen BMPs. Why improve nitrogen management? Nitrogen is expensive and too much nitrogen can be bad for the environment; more nitrogen is not necessarily better. The focus should be maximum profit rather than maximum yield. Nitrogen use efficiency takes all available nitrogen into account. Only half of the nitrogen fertilizer applied in a given year makes it into the plant. The soil provides the other half.

### How can we improve nitrogen use efficiency?

#### 1. Adjust the rates

- ▶ What is the most profitable rate, not necessarily the maximum yield.

#### 2. Reduce the leaks

- ▶ Manage the amount of nitrogen that actually gets to the plant.

#### 3. Consider soil nitrogen

Not only does improved nitrogen use efficiency benefit profitability and reduce greenhouse gas emissions, but it also provides other environmental benefits such as improved biodiversity and soil health.

### What nitrogen management practices are supported?

#### 1. Adjust the rates

- ▶ Nutrient management plan development with CCA or Pag assistance.
- ▶ Soil testing

#### 2. Reduce the leaks

- ▶ Changes in nitrogen fertilizer application method.
- ▶ Price differences between actual nitrogen cost in standard fertilizer and
  - ▶ environmentally smart nitrogen (ESN),
  - ▶ nitrogen fertilizer with dual nitrification and urease inhibitors.

#### 3. Consider soil nitrogen

- ▶ Transportation and spreading costs of synthetic N fertilizer replacements, such as manure, compost or digestate amendments
- ▶ Cost of injecting liquid amendments
- ▶ Cost of seed and cost of custom



planting or equipment rental to increase perennial legumes in annual crop rotations.

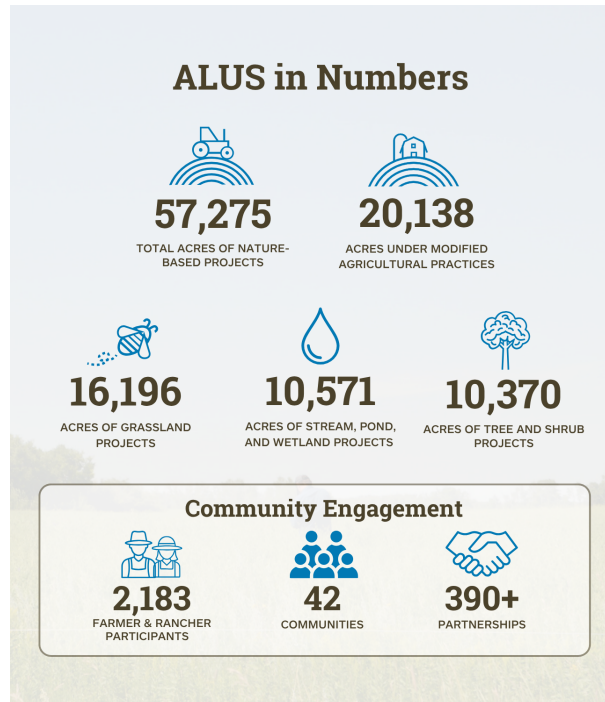
On Farm Climate Action Fund nitrogen BMP information and eligible/ineligible expenses can be found online at [rdar.ca/funding-opportunities/ofcaf](http://rdar.ca/funding-opportunities/ofcaf)

## Kim's corner

### ALUS Wetaskiwin-Leduc

This is the tenth season that the County of Wetaskiwin and Leduc County's sustainable agriculture program has offered the ALUS program to our farmers and ranchers. I am amazed at how far the overall program has come and how quickly those ten seasons have transpired. It has been a true pleasure working with ALUS participants in our counties.

Our community is proud to be involved in a movement which has a national impact!



ALUS participants are changing the landscape. Farmers and ranchers who participate in the ALUS program create and manage a variety of nature-based projects, including grasslands, modified agricultural practices (delayed haying and enhanced grazing), tree and shrub plantings, and wetlands.

These efforts produce a wide range of environmental benefits, such as improved soil and water quality, new and enhanced wildlife habitat, and stronger climate resilience.



## Stay connected

### Leduc County

Sign up for Ag Matters, Leduc County's monthly agricultural e-newsletter. Subscribe at [www.leduc-county.com/agriculture](http://www.leduc-county.com/agriculture).

### County of Wetaskiwin

Receive email/text message updates directly to your phone from the County of Wetaskiwin about agricultural services such as mowing, spraying, the ALUS program, weeds and pest control. To sign up, visit [www.county.wetaskiwin.ab.ca/notify](http://www.county.wetaskiwin.ab.ca/notify), enter your email address, scroll down to News Flashes and select the letter(email) or phone(text) icon next to Agricultural to subscribe. For assistance, contact **780-361-6220**.

### Looking for more?

If you have any questions or wish to bring a matter to the attention of your Agricultural Service Board, please contact:

- ▶ County of Wetaskiwin No. 10 Agricultural Services: 780-361-6226 or visit [www.county.wetaskiwin.ab.ca](http://www.county.wetaskiwin.ab.ca)
- ▶ Leduc County Agricultural Services: 780-955-4593 or visit [www.leduc-county.com](http://www.leduc-county.com)

**JEDI**  
2025  
AG FORUM

Thursday, November 13, 2025  
10:00 a.m. - 4 p.m. Wetaskiwin Ag Society Hall, Wetaskiwin, AB

This **FREE** event (including lunch) is open to all agricultural producers. Gain valuable insights from expert speakers on the latest trends and innovations in agriculture.

For more details and to register, scan the QR code, call the number provided or e-mail [info@jedialberta.com](mailto:info@jedialberta.com).  
[www.jedialberta.com](http://www.jedialberta.com) 780-361-6232

