

2024 FALL NEWSLETTER



County of Wetaskiwin No. 10

Mailing: Box 6960

Wetaskiwin, AB, T9A 2G5

243019A Hwy 13

Phone: 780.352.3321 Fax: 780.352.3486

www.county.wetaskiwin.ab.ca

facebook.com/wetaskiwincounty

Find us on LinkedIn @ County of Wetaskiwin



Table of Contents

Agriculture



05

06
Agricultural Services

09
ALUS

Community



11

12
County Council

14
LUB Review

16
Grant List

Financial

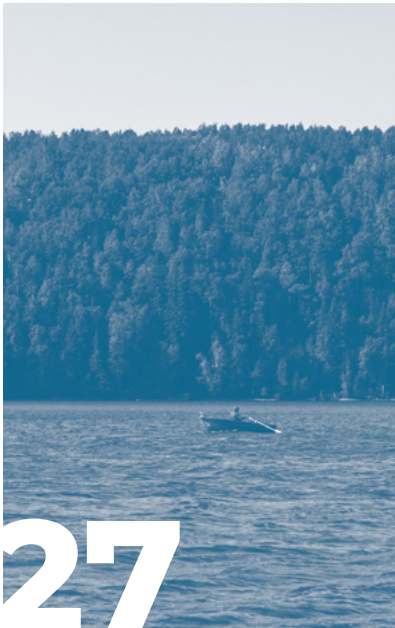


21

22
Financial Statements

24
Economic Development

Recreational



27

28
Recreation
FCSS Events

Services



31

32
Bylaw Enforcement
Emergency Services

34
Protective Services

36
Planning & Development

38
Rural Addressing
Snow Removal

Other Information



41

42
Notify Me

44
Staff Directory

Message from the Reeve

With another busy summer behind us, Council has started to set the direction for the upcoming year. Strategic planning has been completed with some positive changes coming. We will be approving the updated plan shortly with the addition of options for year-round access to Twin Lakes for all your outdoor activities including skating and fishing as well as access to our newly constructed trails! We will also be increasing our level of service in the maintenance of gravelled roads, meaning you will see less interruptions in the summer grading schedules as well as increased resources to address required improvements as well as spot issues as they arise.

Our biggest project of the year, however, has been the extensive update to our Land Use Bylaw. We have toured the County and held numerous open houses to gather feedback on what you want your community to look like and were met with a wide variety of views. Overall, these events were well attended, and we received a great deal of information that we have incorporated into our discussions to help inform the drafting of the updated bylaw. The draft Land Use

Bylaw is now available for review on our website at www.county.wetaskiwin.ab.ca/lub-review. First Reading is scheduled for November 26, 2024, when Council will also set the date for the Public Hearing, expected to be December 17, 2024. This will be your opportunity to let us know if we got it right. Generally, there was support for a loosening of restrictions and regulations which is what we have sought to do. Respecting that some will say there is still far too much while others will say there is not near enough. Balance is always hard with such vastly opposing views but with the years of experience we had around the table drafting this bylaw we are confident that most will find it to be a more user friendly and quite an enabling document for the management of land use in our community while still protecting the rights and quality of life for all.

We are also excited to announce that we have entered into an agreement with Alberta Council to assist us with grant writing and advocacy. This partnership is already producing dividends for the County and will prove to be a massive asset to the County's bottom line. There will be upcoming announcements for new

projects that we have been working on that will finally be moving forward with the help of the grant writing team at Alberta Council. We are very excited to share some of those with you as soon as possible. Please sign up for our news flashes to keep up to date with the latest announcements. Additionally, County community groups can access Alberta Counsel's services at a reduced fee of 1.5% of the grant amount applied for. Further details will be sent directly to community groups in the coming weeks.

Lastly, another project you may be aware of is our partnership with Sustane Technologies from Chester Nova Scotia. Progress is slowly being made and we are doing all of the due diligence required to ensure that this will be a successful project for everyone involved. To that end, I recently had the opportunity to meet with their team and tour the facility. It is such an amazing solution for municipal waste and plastics, and we are excited to bring this solution into our municipal waste program. After seeing the facility firsthand I'm even more sold on the capabilities and opportunity for our municipality as well as what this means for all of Alberta as a truly

sustainable solution going forward. Sustane operates a waste to resource plant that takes all of your typical household garbage and turns it into useful products such as fertilizer and diesel that can then be sold back into the market. With very little rejected during the process, (+10%). Sustane's technology essentially recycles everything and does so at comparable cost to landfill tipping fees. Next steps include regulatory investigation and meetings with several Ministries from both the Provincial and Federal Governments. Securing waste streams from other municipalities and businesses will be another important step before any final decisions are made. This project will benefit our County with a long-term solution to our waste and also provide revenue through tax assessment. We are very excited to seeing this project through and will keep you informed along the way.

— Reeve

Josh Bishop





Agriculture

Agricultural Services

Beaver Control

Beaver Control has been more active in 2024 than it was in 2023 with one hundred and two (102) beaver trapped or removed. To date twenty-four (24) dams have been breached from problem locations throughout the County.

Pesticide and Fertilizer Containers

Starting January 1, 2025, the following County of Wetaskiwin transfer stations will no longer accept pesticide container jugs: Bear Hills Lake, Gwynne, Hilgartner, Winfield, Lakedell, Buck Lake/Alder Flats, and Peace Hills. Producers are expected to return containers to the place of purchase.

Weed Inspection

Five Weed Inspectors were hired to inspect properties for Noxious and Prohibited Noxious Weeds throughout the County. There were 4,000 properties inspected, resulting in over 2,800 weed letters being sent to producers advising them of the weeds and the clean-up process. No owners were sent weed notices for the 2024 season.



Common Tansy

If you have any questions regarding the Agricultural Services programs, please contact Stephen Majek, Director of Agricultural Services, at 780-361-6226 or email smajek@county10.ca.

Rental Equipment

Rental equipment was well used this year. The skunk traps were rented by 7 producers for 28 days, magpie traps were rented by 4 producers for 68 days, and the pasture sprayers were rented by 24 producers for 45 days. The sprayers were available to rent from the County Office through Curtis Snethun in Alder Flats and Charles Collisson in Winfield. Please contact the County Office for further information regarding pasture sprayer rentals.

New!

Free Large Volume On-Farm Pickup

Clean Farms now offers free pickup of ag plastics for high-volume producers in Alberta. To qualify, participants need to accumulate a half truckload of specific materials like pesticide jugs, SPI bags, drums, grain bags, or twine. Contact Clean Farms for more information, to schedule a pickup or visit cleanfarms.ca.



Roadside Spraying

The Roadside Spraying Program started on June 27 for Noxious Weeds, Prohibited Noxious Weeds, Brush, and Sweet Clover. All Township Roads (east/west roads) in the County of Wetaskiwin were sprayed and completed on August 4. In all, 928 miles of roadsides were sprayed. The County, under contract from Alberta Transportation and Economic Corridors, sprayed 278 highway ditch miles along highways 611, 616, 814, 795, 780, 13, 771, 20, and 22.



Roadside Mowing

The Roadside Mowing Program started on July 3 in the Gwynne and Rosebrier areas of the County with two tractors, side arms and fifteen-foot mowers cutting vegetation along County roads east of Highway 795. In total, the County completed 1206 ditch miles of mowing on September 9. The Contract Mowers started mowing roadsides in the Alder Flats area of the County on July 16 and continued to mow east until Highway 795, amassing 1142 ditch miles.

One tractor with a ten-foot pull-behind mower started cutting Subdivisions, Hamlets, Transfer Stations and County properties on July 2. These areas were mowed once in 2024 and completed on September 6.

Contact Us

Director of
Agricultural Services
Stephen Majek
780.361.6226
smajek@county10.ca

Sustainable Agriculture/
ALUS Program
Kim Barkwell
780.387.6182
kbarkwell@county10.ca

County of Wetaskiwin/Clearwater County Weed Workshops

The County of Wetaskiwin extends far to the west, where much of the agricultural land is dedicated to forage crops. Retail herbicide suppliers in the region are limited. Clearwater County, with even fewer options, has taken on the role of supplying herbicides directly to its residents.

A collaboration between Clearwater County and the County of Wetaskiwin began in 2023. As a result, County of Wetaskiwin residents can purchase range and pasture herbicide products at a discounted rate from Clearwater County.

A pre-requisite to purchase product is attending a Weed Workshop. At the workshop, participants learn about common noxious and prohibited noxious weeds in the region. They also learn about control options, along with the different range and pasture herbicides available. This spring, the workshop was held in Buck Lake.

What is the discount? All Weed Workshop attendees are eligible for a 10% discount at purchase. In addition, Corteva offers an 8% rebate when greater than \$1400 of their products are bought in a season. Clearwater County records and submits eligible purchaser information directly to Corteva. Producers receive a rebate cheque directly from Corteva. If a producer qualifies for both incentives, this equates to 18% savings. Well worth the workshop time!

Look out for weed workshop announcements in early spring 2025. The next workshop is expected to be held in May.



Orange Hawkweed



Oxeye Daisy



Tall Buttercup



Project Monitoring and Program Integrity

ALUS Wetaskiwin-Leduc's program began in 2016. ALUS National manages third-party verification on a percentage of projects annually. ALUS provides annual payments to farmers for the ongoing stewardship of projects, and at the local level, the goal is to visit all project sites yearly. These activities strengthen the integrity of the ALUS program and satisfy funders.

As the local program grows, administrative requirements grow with it. To monitor all projects, this year, ALUS Wetaskiwin-Leduc hired a seasonal staff

member. This staff member had their advanced drone pilot certificate, which made for some great aerial pictures.

Many of our community projects involve off-source watering systems and fencing to manage livestock access to water bodies.

Learn more about ALUS Wetaskiwin-Leduc by contacting the Sustainable Agriculture Coordinator at **780.387.6182** or email kbarkwell@county10.ca



YOUR FARM, YOUR LEGACY, YOUR PLAN.

The Alberta Environmental Farm Program covers an entire farm using a self-assessment tool to help producers identify their on-farm environmental risks. At the completion of the program, the farmer has an itemized list of adjustments that can be made in their operation. The EFP is a useful tool for analyzing a farming operation and guiding changes as time and resources allow.

WWW.ALBERTAEPF.COM



AN ARECA INITIATIVE





22

Community

County Council 2024

Division 1




Bill Krahn
 bkrahn@county10.ca
 780.312.4226 (C)

Division 2



Lynn Carwell
 lcarwell@county10.ca
 780.352.0589 (H)
 780.312.0119 (C)

Division 3



Dale Woitt
 dwoitt@county10.ca
 780.352.7429 (H)
 780.360.2737 (C)

Division 4



Josh Bishop
 Reeve
 jbishop@county10.ca
 780.387.8483 (C)

Division 5



Ken Adair
 kadair@county10.ca
 780.352.6318 (H)
 780.361.6398 (C)

Division 6



Kathy Rooyakkers
 Deputy Reeve
 krooyakkers@county10.ca
 780.682.2353 (H)
 780.514.9087 (C)

Division 7



Lyle Seely
 lseely@county10.ca
 780.388.3894 (H)
 780.621.1044 (C)

Investing in Our Community



Buck Lake Estates and West Point Beach Paving



Range Rd 244, Range Rd 242, Township Rd 472 Shoulder Pull



Buck Lake Parking



Bridge Replacement

LUB

Land Use Bylaw Review & Update



This past summer, four Open House sessions on the Land Use Bylaw (LUB) were held at Wetaskiwin, Winfield, Mulhurst Bay, and Alder Flats. Over 300 people attended the Open Houses! Thank you to everyone who participated. Your feedback is being taken into account in the development of the new Land Use Bylaw, a key step toward a more efficient, sustainable, and vibrant future for our community.

- September 7, 2023 – Council Workshop;
- October – November 2023 – Survey in Newsletter and on Website; 240 surveys submitted!
- November 2023 – Land Use Bylaw Educational Roadshow;
- April 2024 – Newsletter update on LUB progress;
- May 9, 2024 – Wetaskiwin Open House;
- May 30, 2024 – Council Workshop; and
- July & August 2024 – 4 LUB Open Houses plus Buck Lake Open House.

After the open houses, the Project Team, comprised of County Planning and Development Staff, V3 Consulting, and the Planning and Development Committee, reviewed the feedback received, not only from the summer but also all the engagements over the past year, and went about completing a draft of the Land Use Bylaw (LUB).

In drafting the LUB, the Project Team and Committee looked to balance the various needs and desires of residents with the principles and objectives of the Municipal Development Plan. For example:

Service Delivery

Being reliable, effective and efficient through streamlining application process and minimizing red tape.

Rural Lifestyle

Demonstrating leadership in agricultural innovation, diversification, and affordability by including more uses in each zoning district, allowing 2 dwellings on a parcel, and making more uses exempt from permits.

Robust Economy

Supporting a diverse and flourishing economy by loosening regulations and making more commercial and industrial uses permitted in their respective zoning districts.

Environmental Stewardship

Leadership in protecting and conserving environmental features by establishing regulations that minimize the impact on the natural landscape while supporting opportunities for responsible recreation and enjoyment of the environment our County has been blessed with.



Next Steps

County Council has completed their review of the draft Land Use Bylaw, which is now available for public review on our website at www.county.wetaskiwin.ab.ca/lub-review. This allows residents and stakeholders the opportunity to review the proposed changes and provide additional comments.

Following the public review period, a formal Public Hearing will be scheduled, giving everyone a chance to share their thoughts directly with Council before any final decisions are made. First Reading of the draft Bylaw is scheduled for November 26, 2024, when Council will also set the date for the Public Hearing, anticipated to be December 17, 2024. The feedback from this hearing, along with previous input, will be carefully considered as Council moves towards adopting the new LUB, ensuring it reflects the community's vision for a more efficient and well-planned future.

How do I stay informed?

To stay informed on the latest updates, visit our project website www.county.wetaskiwin.ab.ca/LUB-Review, sign up for News Flashes to receive email updates, follow us on Facebook, keep an eye on the Pipestone Flyer, or email lubreview@county10.ca for more information.

Grant List

MSI Provincial Community Grants	
Lakedell Agricultural Society - Office Computers	\$1,500.00
Western Pioneers Seniors - Roof Replacement	\$20,895.00
Winfield & District Agricultural Society - HVAC/Plumbing 2024	\$5,137.00
TOTAL	\$27,532.00

FCSS Grants	
Alder Flats Buck Lake Public Library - 2024 Yearly Programming	\$5,000.00
Alder Flats Elementary School - One Book One School	\$650.00
Alder Flats Elementary School - The Cultural Wheel	\$500.00
Breton and Area FCSS - Breton Women's Wellness Day	\$1,500.00
Breton and Area FCSS - Summer Youth Program	\$1,800.00
FCSS Alder Flats Elementary School - Artist Residency Project	\$1,000.00
Lakedell Agricultural Society - Family Day 2025	\$1,600.00
Lakedell Agricultural Society - Women's Conference 2025	\$2,000.00
Lakedell Elementary School - One Book, One School	\$750.00
Leaders of Tomorrow - Policy	\$1,000.00
Leduc & District Victim Services - Policy	\$3,691.00
Millet & District Historical Society - Children's Museum Program 2024	\$5,000.00
Millet & District Recreational & Agricultural Society - 2024 Harvest Fair	\$4,000.00
Peace Hills Adventure Club - Youth Drop In	\$3,000.00
Seventh Day Adventist - Anxiety and Depression Recovery Program	\$1,600.00
The Town of Millet Library Board - Children's Coding Program	\$750.00
The Town of Millet Library Board - Children's Summer Wellness Program	\$1,200.00
The Town of Millet Library Board - Parent Bonding Storytime	\$2,400.00
Wetaskiwin & District Victim Services - Policy	\$5,031.00
Winfield Elementary School - Artist Residency Project	\$1,000.00
TOTAL	\$43,472.00

Cemetery Operating & Maintenance Assistance Grants	
Alder Flats Cemetery	\$1,000.00
Bonnie Glen Cemetery	\$970.00
Bunker Hill Cemetery Club	\$1,000.00
Calvary Baptist Church Cemetery	\$1,000.00
Crooked Lake Cemetery	\$1,000.00
Dalby Cemetery	\$1,000.00
Emmaus Lutheran Cemetery	\$1,000.00
Hegge Community Cemetery	\$850.00
Immanuel Lutheran Church Cemetery	\$530.00
Lakedell Community Cemetery	\$1,000.00
Lone Ridge Community Cemetery	\$1,000.00
Malmö Mission Covenant Church Cemetery	\$1,000.00
Maywood Cemetery	\$1,000.00
Millet Community Cemetery	\$1,000.00
Mount Clare Cemetery	\$1,000.00
Nashville Cemetery	\$1,000.00
New Sweden Mission Church Cemetery	\$1,000.00
Peace Hills Zion Lutheran Cemetery	\$1,000.00
Poplar Valley Cemetery	\$1,000.00
Roseland Cemetery	\$1,000.00
Siegel Hill Cemetery	\$1,000.00
St. John's Lutheran Cemetery	\$1,000.00
St. Norberts Community Cemetery	\$600.00
St. Peters Lutheran Cemetery	\$1,000.00
Twin Creek Cemetery	\$740.00
Vang Cemetery	\$1,000.00
Waldheim Cemetery	\$450.00
TOTAL	\$25,140.00

Library Grants	
Alder Flats/Buck Lake Public Library	\$8,725.44
Lakedell Area Community Library Society	\$9,970.52
Millet Public Library	\$14,941.04
Wetaskiwin Public Library	\$24,901.74
Winfield Community Library	\$11,215.61
TOTAL	\$69,754.35

Budgeted Intermunicipal Recreation Funding	
City of Wetaskiwin	\$560,785.00
Millet Recreation Centre	\$161,500.00
TOTAL	\$722,285.00

Charitable Organizations, Institution & Organization Grants	
Royal Canadian Legion Remembrance Day Wreaths	\$750.00
Canteen Events	\$150.00
Wetaskiwin and District Victims Services	\$7,000.00
Farm Safety Centre Safety Smarts Program	\$3,000.00
STARS	\$16,818.00
Wetaskiwin and County Sports Hall of Fame	\$200.00
Alberta Conservation Association	\$1,000.00
TOTAL	\$28,918.00

Chamber of Commerce Grants	
Pigeon Lake Regional Chamber of Commerce	\$10,000.00
Leduc, Nisku and Wetaskiwin Regional Chamber of Commerce	\$7,750.00
TOTAL	\$17,750.00

Zone 1	
Alberta Central Railway Museum Society - Grasshopper Lawn Mover	\$12,250.00
Alberta Central Railway Museum Society - Railway Day	\$875.00
Angus Ridge Community Hall - 2024 Operational	\$5,817.00
Wetaskiwin Ski Club - Utility Assistance	\$9,433.00
Wetaskiwin Soccer Club - Spirit Cup Tournament	\$2,000.00
TOTAL	\$30,375.00

Zone 5	
Hillside Community Club - Utilities /Insurance	\$2,443.00
Millet and District Historical Society - Kitchen Equipment & Storage	\$2,000.00
Millet Soccer Association - First Aid Kits	\$587.40
Millet Soccer Association - Operations	\$1,000.00
TOTAL	\$6,030.40

Zone 3	
Winfield & District Agriculture Society - Operations 2024	\$12,094.00
Winfield & District Agriculture Society - Summer Saddle Series Barrel Jackpots	\$2,000.00
Winfield & District Historical Society - Flowers, Signage & Pictures	\$825.00
Winfield and District 4H Beef Club - Grooming Chute and Blower	\$1,500.00
Winfield Rec Hockey - Jerseys Insurance Supplies	\$2,000.00
Yeoford Community Centre - Facility Operations	\$6,980.00
Yeoford Community Centre - Membership Drive	\$2,000.00
TOTAL	\$27,399.00

Zone 4	
Alder Flats Agricultural Society - Captial	\$1,200.00
Alder Flats Agricultural Society - Strategic Plan Facilitator	\$2,000.00
Alder Flats Agricultural Society - Utilities	\$16,612.00
Alder Flats Fish & Game Association - Facility Operations	\$2,900.00
Alder Flats Fish & Game Association - Trees, Mulcher, Site Improvement	\$3,600.00
Alder Flats Wool and Hoof - Training Costs Achievement Day	\$1,000.00
Buck Lake Community and Agricultural Society - Facility Operations	\$9,127.50
Buck Lake Senior Citizens - Footcare	\$2,000.00
Buck Lake Senior Citizens - Operating Costs	\$6,000.00
Buck Lake Senior Citizens - Various Events (Foot Care/Floor Curling/Craft Day/Games)	\$2,000.00
Buck Lake Stampede Society - Operations	\$3,000.00
Buck Lake Stampede Society - Ticket Booth	\$1,500.00
Piecemakers Quilt Club - Charity Quilt Making	\$1,000.00
Western Pioneers Seniors Citizens - Operational Funding	\$6,000.00
Winfield Baseball Association - 2024 Season Registration Subsidy, New Equipment, Grounds Maintenance	\$2,000.00
TOTAL	\$59,939.50

Zone 2	
Policy 72.0.1 - Falun Community League - Facility Operations	\$13,907.48
Policy 72.0.1 - Lakedell Agricultural Society	\$12,758.30
Policy 72.0.1 - Lone Ridge Community Hall Association	\$3,354.00
Policy 72.0.1 - Mulhurst Bay Community League	\$9,451.46
Policy 72.0.1 - Pipestone Community Society	\$9,990.87
Policy 72.0.1 - Portobello Community Society	\$5,933.55
Policy 72.0.1 - Usona Agricultural Society	\$10,436.47
Alberta Conservation Association - Kids Can Catch	\$1,000.00
Brightview Community Baptist Society - Jr & Sr Youth Group	\$2,000.00
Falun Community Centre - Community Events	\$2,000.00
Lakedell 4H Lighthorse Club	\$1,800.00
Lakedell Agricultural Society - 2025 Ag Bonspiel	\$1,700.00
Lakedell Agricultural Society - 50 Year Anniversary	\$2,000.00
Lakedell Agricultural Society - Bocce Ball Equipment	\$494.00
Lakedell Agricultural Society - Curling 2024/25 Season	\$905.00
Lakedell Agricultural Society - Functional Fitness	\$475.00
Lakedell Agricultural Society - Gymkhana Club	\$865.00
Lakedell Agricultural Society - Junior Curling	\$960.00
Lakedell Agricultural Society - Lakedell Country Fair 2024	\$2,000.00
Lakedell Agricultural Society - Show Series (Summer Horse Shows)	\$2,000.00
Lakedell Agricultural Society - Spring BBQ	\$2,000.00
Lone Ridge Community Hall Association - Care Quilts Program	\$1,800.00
Lone Ridge Community Hall Association - Children's Programming	\$300.00
Lone Ridge Community Hall Association - Fall Supper	\$500.00
Mulhurst Bay Community League - Compassionate Quilts	\$250.00
Pigeon Lake Athletic Cultural and Education Society (PLACE) - Rink Equipment Replacements	\$1,688.00
Pigeon Lake Soccer Club - 2024 Season	\$2,000.00
Portobello Community Society - BBQ and Spring Cleanup	\$300.00
Royal Canadian Mulhurst Legion - Community Christmas Event	\$2,000.00
Royal Canadian Mulhurst Legion - Sporting Supplies	\$250.00
Usona Agricultural Society - Bonspiel	\$2,000.00
Usona Agricultural Society - Farmers Day	\$525.00
Usona Agricultural Society - Harvest Dance	\$2,000.00
Wizard Lake Watershed & Lake Stewardship Association - 2024 Buoy Installation & Removal	\$165.00
Wizard Lake Watershed & Lake Stewardship Association - 2024 Canada Day & Park Day	\$575.00
Wizard Lake Watershed & Lake Stewardship Association - 2024 Seasonal Lake Cleanup	\$125.00
Wizard Lake Watershed & Lake Stewardship Association - 2025 Try It Event	\$2,000.00
TOTAL	\$102,509.13



03

Financial

Financial Statements

COUNTY OF WETASKIWIN NO.10
Consolidated Statement of Financial Position
December 31, 2023

	2023	2022 Restated
ASSETS		
Cash and equivalents (Note 2)	\$ 22,149,191	\$ 14,887,576
Investments (Note 3)	18,497,398	18,203,865
Property taxes receivable (Note 4)	2,005,598	1,936,124
Trade and other accounts receivable (Note 5)	6,183,091	5,171,591
Tax sales proceeds (Note 6)	77,725	13,148
Patronage reserves	13,820	13,572
Debt charges recoverable (Note 7)	9,497,427	10,238,343
	58,424,250	50,464,219
LIABILITIES		
Accounts payable and accrued liabilities (Note 9)	2,873,984	3,186,137
Deposit liabilities	183,602	246,611
Deferred revenue (Note 10)	13,701,283	11,535,066
Employee benefit obligations (Note 11)	401,747	380,894
Tax sales proceeds liability (Note 6)	77,725	13,148
Long term debt (Note 12)	9,575,552	10,238,342
Contaminated sites	750,000	750,000
Asset retirement obligation (Note 13)	4,352,596	4,147,471
	31,916,489	30,497,669
NET FINANCIAL ASSETS	26,507,761	19,966,550
NON-FINANCIAL ASSETS		
Tangible capital assets (Schedule II)	104,117,356	107,735,791
Inventory for consumption (Note 14)	9,194,993	9,240,207
Membership fee (Note 16)	400,000	400,000
Prepaid expenses	341,808	180,115
	114,054,157	117,556,113
ACCUMULATED SURPLUS (Schedule I)	\$140,561,918	\$137,522,656

COMMITMENTS AND CONTINGENCIES (Note 21)

Approved on behalf of Council

Reeve

Deputy Reeve

COUNTY OF WETASKIWIN NO.10
Consolidated Statement of Operations and Accumulated Surplus
Year Ended December 31, 2023

	Budget 2023 Note 23	Total 2023	Total 2022 Restated
REVENUE			
Net municipal property taxes (Schedule III)	\$ 23,370,487	\$ 24,060,691	\$ 24,403,154
User fees and service charges	3,094,391	3,685,768	3,697,179
Investment income	853,050	1,986,879	693,595
Government transfers for operating (Schedule IV)	1,460,626	1,665,408	1,391,569
Other	603,130	395,507	689,391
Sales to other governments	692,098	546,412	637,115
Permits, licenses, and fines	260,000	291,054	218,920
Rental	274,409	291,789	234,367
	30,608,191	32,923,508	31,965,290
EXPENSES			
Public works	9,482,908	13,762,581	13,743,210
General Government	5,197,326	5,818,372	5,358,873
Utilities	1,797,818	3,165,138	2,773,249
Protective services	2,694,550	2,853,106	2,550,015
Recreation and cultural services	1,803,528	1,762,897	1,770,762
Planning and development	1,471,006	1,184,412	898,116
Agriculture Service Board	1,110,361	878,758	848,261
Family and Community Support Services	483,766	456,889	480,237
Cemetery	33,654	33,615	24,820
	24,074,917	29,915,768	28,447,543
	6,533,274	3,007,740	3,517,747
OTHER INCOME (EXPENSES)			
Government transfers for capital (Schedule IV)	5,050,752	179,693	3,598,167
(Loss) Gain on sale of tangible capital assets	123,500	(148,171)	134,677
	5,174,252	31,522	3,732,844
EXCESS (DEFICIENCY) OF REVENUE OVER EXPENSES	11,707,526	3,039,262	7,250,591
ACCUMULATED SURPLUS - BEGINNING OF YEAR	137,522,656	137,522,656	130,272,065
ACCUMULATED SURPLUS - END OF YEAR	\$149,230,182	\$140,561,918	\$137,522,656

To learn more about the County's Budget and Financial Statements visit:

www.county.wetaskiwin.ab.ca/474/Budget-Finance

Discover the guidance you need for your business journey with JEDI!

Discover the support your business needs with JEDI! As a committed non-profit, JEDI is focused on driving economic growth in the County of Wetaskiwin. We equip local businesses and agricultural producers with the essential tools to succeed. Visit our website or contact us for updates on seminars, events, funding, and resources.

Empowering Local Businesses Through our Business Visitation Program

Recognizing the pivotal role of existing businesses in our community's economic health, we're proactively engaging in our Business Visitation Program this spring/summer. Through this ongoing initiative, we gather insights to understand local businesses' needs and perceptions of the business environment in the County of Wetaskiwin. Contact our office to schedule a visitation for your business.



JEDI
2024
AG FORUM
Thursday, November 21, 2024
Winfield & District Ag Society Agriplex Hall, Winfield, Alberta

FREE event (including lunch) for local farmers & agricultural producers. Featuring expert speakers presenting on a variety of emerging ag topics. Scan the QR Code or call for more information and to register.

www.jedialberta.com 780-361-6232

The poster features a background image of a farm with a tractor and a combine harvester. It includes three circular inset images: a green field, a field of wheat, and a brown cow. A QR code is located in the bottom right corner, and the County of Wetaskiwin logo is in the top right corner.

Upcoming Fall Events

We invite you to our annual Ag Forum on Thursday, November 21, 2024, from 9:30AM to 4:00PM at the Winfield Agriplex Hall, where expert speakers will cover essential agriculture topics relevant to our region's farmers. Registration is required; please scan the QR code for more information. To register or receive e-mail updates as more details become available, please contact us at info@jedialberta.com or call **780.361.6232**.

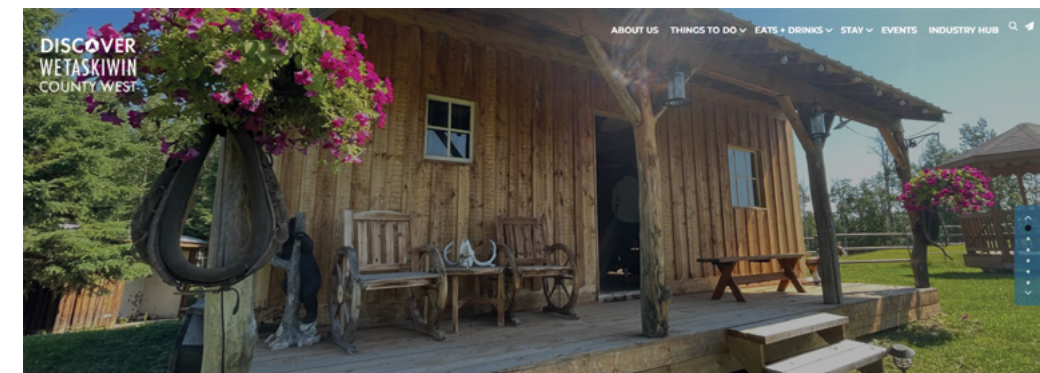
StartUp Leduc Wetaskiwin Regions Entrepreneurial Development Program

JEDI is pleased to partner in the StartUp Leduc Wetaskiwin Regions program. The program is designed to empower, connect, and provide businesses with the resources they need to succeed. Visit <https://startupleducwetaskiwin.biz/> or contact Amber Cook, Program Director, at info@startupleduc.ca or **780.566.5454** for more information.

Launch of Discover Wetaskiwin County West Website

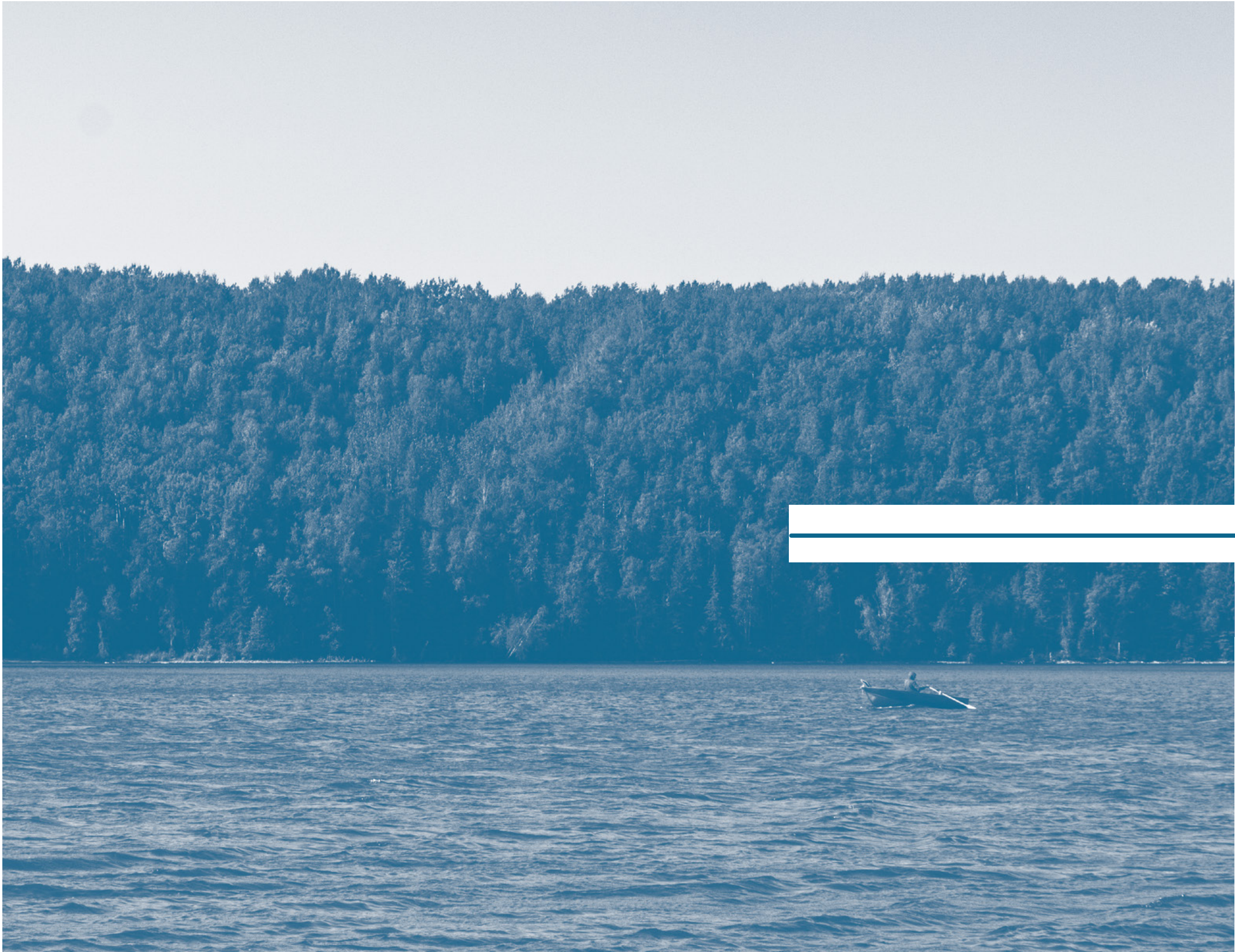
JEDI is excited to announce the official launch of the Discover Wetaskiwin County West website. This comprehensive digital platform showcases the diverse agriculture, business, and tourism offerings in the hamlets of Winfield, Buck Lake, and Alder Flats and surrounding areas.

Supported by the Leduc Nisku and Wetaskiwin Regional Chamber of Commerce, Discover Wetaskiwin County West is funded by the Small Community Opportunity Program grant from the Province of Alberta. The newly launched website serves as a digital gateway to the region, providing detailed information about local activities, dining, accommodations, events, and more. Visitors can also utilize the 'Plan Your Trip' feature for a seamless experience. For more information, visit discoverwetaskiwinwest.ca and start planning your journey today.



Connect Us

For more information, visit www.jedialberta.com, email us at info@jedialberta.com, or call **780.361.6232**. Follow us on social media [@JEDIALberta](https://www.instagram.com/JEDIALberta) for the latest updates.



Recreational

WINFIELD ARENA ADVERTISING OPPORTUNITY

The County is offering Local Businesses a spot on the arena wall! Reasonable rates for seasonal signage.

**FOR MORE INFORMATION,
CONTACT GEOFF OR ERIN**
arecreation@county10.ca
780.352.3321

WINFIELD ARENA JOIN US FOR PUBLIC SKATING!

**FOR MORE INFORMATION,
CONTACT GEOFF OR ERIN**
arecreation@county10.ca
780.352.3321

We are excited to offer

YOUTH SPORTS CAMPS!

Camps will take place across the County. Watch upcoming announcements for a program near you.

**LET'S
CAMP**

**MARK YOUR CALENDARS!
Online Bookings
Open April 1, 2025!**

The County of Wetaskiwin will be accepting online booking through *Let's Camp* for the following Municipal Campgrounds:

- Battle Lake Campground
- Mound Red Campground
- Buck Lake Campground
- Red Deer Lake Campground
- Coal Lake Campground
- Twin Lakes Campground

Accepting bookings online beginning at 10:00 AM for May 15th and on!

LETSCAMP.CA COUNTY.WETASKIWIN.AB.CA

Upcoming Events

Program Dates and Times Subject to Change. **Please see the website for details, times and locations.** New Programs are always being added!

Date	Event
November 7, 14, 21 & 28, 2024 December 5 & 12, 2024	Low Impact Exercise Class (Buck Lake)
November 5 & 12, 2024 December 3, 10 & 17, 2024	Learn Your Technology (Mulhurst Bay)
November 8, 15, 22 & 29, 2024 December 6, 13 & 20, 2024	Family Bowling (Alder Flats)
December 6, 2024	Babysitting (Portobello Hall)
November 13, 2024	Prepping for Farm Retirement (Lakedell)
November 21 & 22, 2024	Psychological First Aid (Mulhurst Bay)
January 26, 2025	75 Ways to Save on Household Expenses
February 19, 2025	Investment Basics: Making the Most of Your Money
March 26, 2025	Living Well on Retirement Income

Low Impact Exercise Class

Starting September 19, 2024

Join us for an exercise class suited to your level.

- Thursday Mornings
- Sit or Stand
- 11:00 AM - 12:00 PM
- Older Adults
- Buck Lake Seniors Centre
- Drop-in: \$2.00
- Certified Instructor
- Equipment Provided

CALL ERIN FOR INFO
780.352.3321

Lakedell Wellness Mini Retreats

January 16 | February 20 | March 20 | April 17

CHAIR YOGA
with Janelle
12:30PM - 1:30PM

QUGONG
with Randy
2:00PM - 3:00PM

WHAT TO BRING:
Yoga mat, strap, block & water,
therapy or tennis ball, props available

\$2 FEE PER CLASS Payable at class

COFFEE BREAK
BETWEEN CLASSES

REGISTER NOW!
fcssadmin@county10.ca | 780.352.3321



Services

Bylaw Enforcement

Equipping your dog with ID

Complaints regarding dogs are frequently received by the County with some of the most common being dogs at-large. Many times, owners who may not be aware that their dog is missing or may have had their pet lost or stolen can have their pet turn up a considerable distance from their original homes.

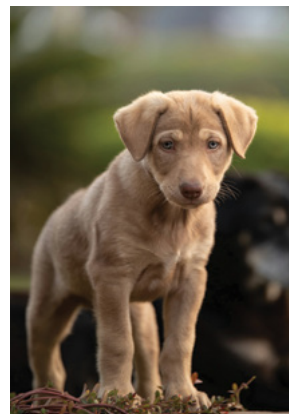
Without permanent identification, it is nearly impossible to identify lost animals and reunite them with their families. Each year, approximately 95% of cats and 30% of dogs in Canada are unable to be traced to their original guardian. Having some form of ID on your dog offers many benefits, no matter where they turn up. Whether it be a tattoo, microchip, or collar with marked tags, Bylaw can make every reasonable effort to reunite dogs at large with their owners before resorting to impounding them.

Choosing to permanently identify your dog with a microchip or tattoo has further advantages, including:

- being safe, affordable and lasting the lifetime of your pet
- increasing the chance of your dog being returned to you, with tattooing ensuring traceability province-wide and microchipping ensuring traceability worldwide
- extending the pound hold time (if Bylaw is unable to contact the owner) from three to ten business days to ensure every opportunity for the dog to be claimed
- easily being able to update contact information in case of re-homing or address changes

At-large dogs are impounded at Wetaskiwin Animal Clinic, located in the City of Wetaskiwin. In the unfortunate situation where the dog isn't claimed by its owner within the hold time, it may then be placed up for adoption pending a behavioural and medical assessment by a licensed veterinarian. Before going home with their new family, the dog will be vaccinated and spayed/neutered to prevent unwanted litters.

If you find a dog at large within the County of Wetaskiwin, contact the Bylaw Enforcement dispatch line at **780.352.0005**. Complainant information is always kept in confidence.



Emergency Services

Emergencies like barn fires, blizzards, and floods are common risks in Alberta's agricultural communities. Being prepared can help protect your farm, animals, and property so you can recover quickly.

Know the Risks

Identifying hazards helps reduce the impact of sudden events, which can include:

- Flooding from creeks, rivers, or lakes
- Fires in grasslands, forests, or barns
- Severe storms (wind, tornadoes, rain, blizzards)
- Hazardous waste spills
- Animal and crop diseases or pests

Make a Plan

A solid plan helps you respond effectively and cope with stress. Consider:

- Creating a map of the property showing buildings, key services, and storage locations. Post the map in each building.
- Setting a meeting point for evacuation. Ensure animals have food, water, and shelter at this location.
- Practicing safe transportation for animals and ensuring they are visually identified (ear tags, tattoos).
- Creating and storing an emergency contact list and records onsite, offsite, and digitally.
- Working with local emergency management for available support.

Stay or Go

Follow official directions to either shelter in place or evacuate.

Shelter in Place

If sheltering, confine animals if possible, but avoid overcrowding. Be mindful of increased risks such as aggression and disease spread.

Evacuation

Evacuate with animals if time allows. Ensure you have equipment ready (corrals, trailers), bring feed and water, and mark animals in case they get loose.

If leaving animals behind, ensure they have feed and water for 72 hours, leave gates open for movement, and secure barn doors to prevent entrapment.

Supplies

Keep enough supplies for at least 14 days:

- Water, food, radio, flashlight, documents, and medications for your household.
- Feed, water, first aid, identification, and handling tools for animals.

Stay Informed

Download the Alberta Emergency Alert app for critical alerts. More resources can be found at:

www.alberta.ca/farm-animals-and-livestock-preparedness
www.afac.ab.ca/resources/emergency-preparedness/

Protective Services

Community Peace Officers

Community Peace Officers (CPO) are employed by the County of Wetaskiwin with authority to operate by the Alberta Solicitor General Public Security Division. The County of Wetaskiwin currently employs four (4) full-time Peace Officers that carry out a wide variety of duties such as public safety, public engagement/education, preventative patrols, and road protection initiatives.

Peace Officers enforce the following:

- Municipal Bylaws;
- *Animal Protection Act*;
- *Dangerous Goods Act*;
- *Environmental Protection and Enhancement Act*;
- *Fuel Tax Act*;
- *Gaming, Liquor, and Cannabis Act*;
- *Petty Trespass Act*;
- *Provincial Administrative Penalties Act*;
- *Provincial Offences Procedure Act*;
- *Tobacco, Smoking, and Vaping Reduction Act*;
- *Traffic Safety Act*; and
- *Trespass to Premises Act*.

Additionally, proactive patrols are made throughout the County of Wetaskiwin, promoting traffic safety and road protection, including commercial vehicle inspections.

Furthermore, support is provided for other emergency agencies such as the RCMP, Fish and Wildlife, and Canadian Pacific Kansas City Rail (CPKC). Community Peace Officers are constantly striving to make the County of Wetaskiwin a safe and enjoyable place to live and visit.



Summer Highlights

Unsafe Commercial Vehicle Operation

A CPO was flagged down by a frantic motorist near Alder Flats regarding a commercial vehicle hauling large round bales that were about to fall off at high-way speeds. The CPO intercepted the unit and pulled it over before the bales fell off. The truck was slowly escorted off the highway and taken to the Alder Flats Public Works Yard where the load could be adjusted. No charges were laid.

Commercial Vehicle Overload Files

A CPO making patrols near Peace Hills, observed a tractor/super B combination traveling a fifty percent (50%) banned local road. The vehicle was fully loaded and subsequently weighed on portable scales. The vehicle was found over 100% weights at 18,800 kilograms. The CPO escorted the driver to the Leduc Scale House and re-weighed the combination. Substantial charges laid resulting in several thousands of dollars in fines. This was one of the largest overloads of 2024. Also, a CPO stopped a commercial vehicle (crane) for inspection near Wetaskiwin. Numerous offences were found during the stop including operating a motor vehicle with the wrong class of license, operating above registered weight, and operating over legal weight. Charges and warnings were issued.

Motor Vehicle Collision

A CPO responded to an injury motor vehicle collision near Wetaskiwin, A CPO arrived at the same time as numerous Royal Canadian Mounted Police (RCMP) Members and performed first aid on one (1) of three (3) patients. This collision was being investigated as an impaired driving matter. One (1) of the victims was seriously injured and was taken to the hospital via ambulance. The Range Road was closed for several hours as the scene was investigated.

Excessive Speeding

A CPO stopped a vehicle for speeding near Battle Lake that was travelling 170 km/hr. on a posted 100 km/hr. Provincial Highway. A summons was issued to the driver.

Public Relations

A CPO assisted with the "Learn to Fish" program hosted by the County of Wetaskiwin at Mound Red Park. The CPO worked with several youths on legislation under the Fisheries Act, species identification, different angling techniques and proper fish handling methods. A CPO assisted a rancher west of the city with their cattle at large after being seen grazing in the ditch of HWY 13.

Stolen Vehicle

While CPOs were patrolling in the Winfield area, CPOs spotted a vehicle with no licence plate. The CPO attempted a traffic stop in which the vehicle drove into the ditch and driver fled on foot.

Trends

There has been an increase in emergency service calls along Highway 22 relating to motor vehicle collisions. CPOs will be in the area to promote traffic safety in an effort to hopefully reduce collisions.

If you have questions or complaints within the County of Wetaskiwin pertaining to enforceable areas, please contact the 24/7 Dispatch Line at **780.352.0005**.

If you have information on any crime, please call your local RCMP Detachment, Crimestoppers, or 911 in case of an emergency. For online crime reporting go to the following County of Wetaskiwin search. www.county.wetaskiwin.ab.ca/639/RCMP

Planning & Development

Did you know?

You can access a digital map of the County, including your specific property, by visiting the County's website. The online map provides a range of features to help you find information such as:

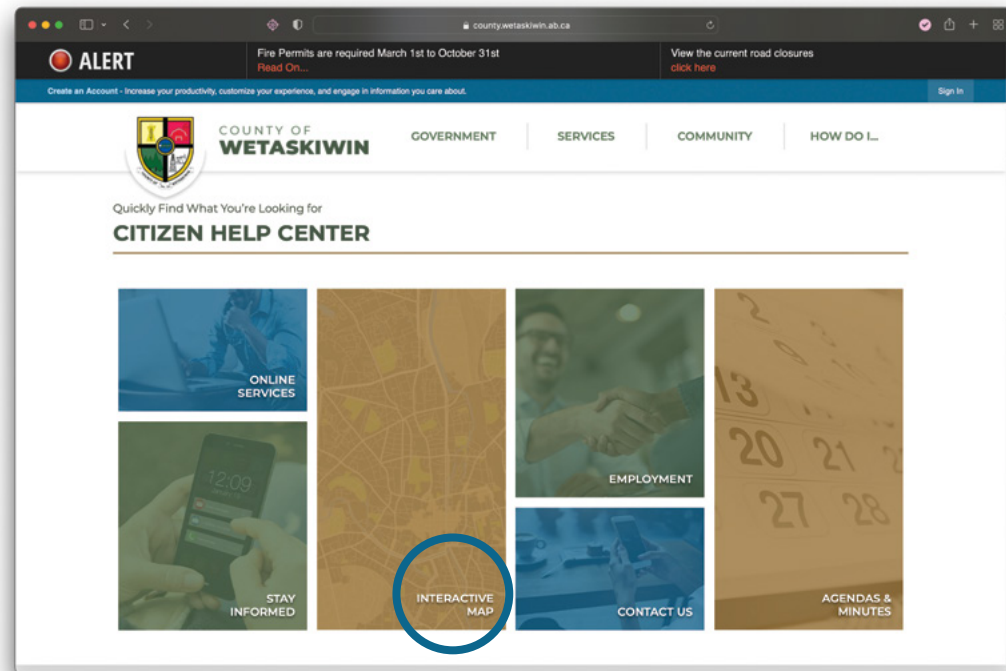
- Aerial images of properties, roadways, parks, community facilities, and more
- Measurement tools for creating site plans when applying for a development permit
- Roll number
- Legal land location
- Address
- Parcel size
- Zoning
- Electoral area
- Tax and assessment information



Scan to access the county map

How to Access the Online County Map:

Visit the County website: <https://www.county.wetaskiwin.ab.ca>



How to Apply for a Development Permit

1. **Determine your property's land use district:** Visit the County's interactive map. (Click on "Imagery" in the top right corner for an aerial view of property).
2. **Search for your property:** Enter your property address in the search bar. Once located, click on the property to view the zoning code. You can click on the zoning code to determine the specific land use district.
3. **Review district regulations:** Determine the allowed uses within your district, including setbacks, building heights, and other regulations.
4. **Check the Land Use Bylaw:** Review the definitions, rules, and regulations in the Land Use Bylaw.
5. **Fill out the application:** If your district allows your intended use, complete the development permit application. Ensure that you follow the checklist to include all required documentation. If your intended use is not listed, email wpermits@county10.ca to inquire about redistricting options.
6. **Submit your application:** Email the completed application to wpermits@county10.ca for review. Once your application is deemed complete, a member of the Planning and Development team will inform you of the application fee and provide instructions for payment. If any items are missing, you will be notified.

Visit the Planning and Development website page for more information and application forms: www.county.wetaskiwin.ab.ca/619/Applications



Scan to visit Planning & Development page

Building Permits

A Development Permit is not the same as a Building Permit. For inquiries about Safety Codes Permits, please contact Superior Safety Codes for:

- Building
- Plumbing
- Gas
- Electrical
- Private Sewage/Septic Systems

The County recognizes that building a new structure can be challenging at times. The Planning and Development Department encourages anyone with inquiries about development in the County to visit the County website or email wpermits@county10.ca to help streamline the development process.

Submitting inquiries in writing ensures that important information is clearly communicated and nothing is overlooked.

Please contact Superior Safety Codes in Edmonton **780.489.4777** or Red Deer **403.358.5545** or email info@superiorsafetycodes.com to inquire about Safety Codes Permits or visit superiorsafetycodes.com

Rural Addressing

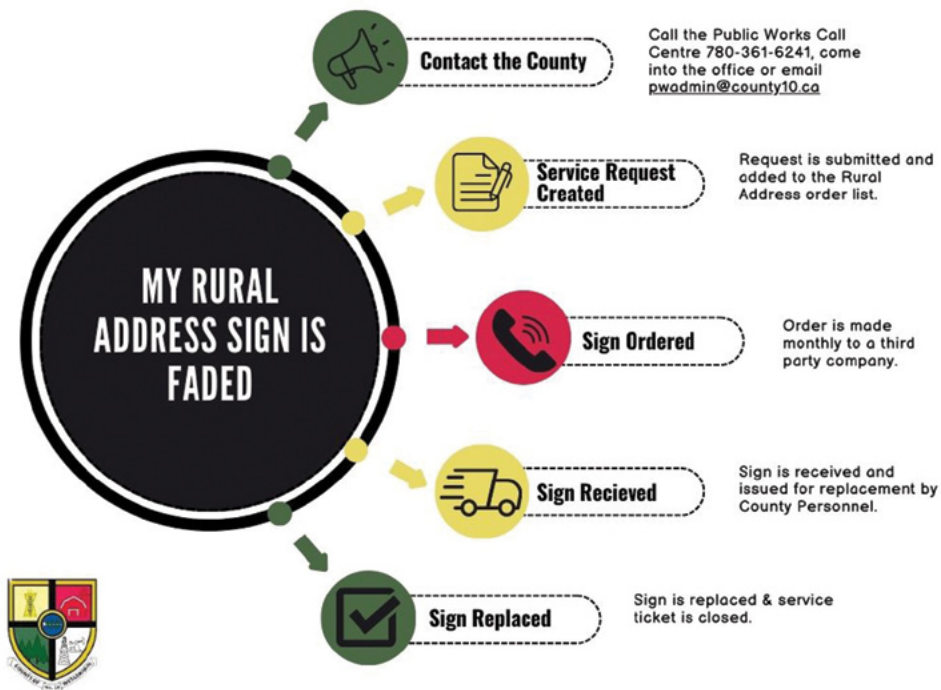
Rural addressing plays a vital role in the County's Geographic Information System (GIS) and the 911 Emergency Response System. The County of Wetaskiwin launched this project in the summer of 2012 and was completed in 2013. Regular updates to these addresses are sent to the 911 control center, ensuring they have the most accurate information to coordinate effective emergency responses. Your rural address assigns a specific address and house number to each residence on your property. It's important to note that a rural address differs from a legal land description; which only identifies the land location, not a postal address; which is used for deliveries etc.

Rural addresses are based on the location of your driveway along a county road or highway. Each road is divided into 40-metre intervals, and a unique number is assigned based on where your approach is located on that grid. This number, combined with the road number, forms your rural address.

Since the rural addressing project was launched in 2013, many of the signs have reached the end of their life expectancy, resulting in fading and making them difficult to read. It is the responsibility of the resident to report their faded address sign to the County so that a replacement sign can be ordered and installed at no cost to the resident.

Did you know?

Rural address signs are the responsibility of the ratepayer. To ensure your sign remains visible, please maintain the surrounding grass, shrubbery, and trees. If your sign is faded, it's your responsibility to report it, and the County will gladly order and install a replacement. Keeping your sign visible helps ensure quick access for emergency services. Thank you for your cooperation! It can take up to 90 days to complete a replacement order; schedules permitting.



Snow Removal



As winter approaches, County road crews are working hard to keep roads safe and accessible for everyone. In the event the Chief Administrative Officer (CAO) declares a snow event—defined as a snowfall exceeding 10 cm—we aim to clear the roads within 72 hours after the last snowfall or when conditions allow.

Please note that the County does not provide plowing services for private driveways. If you need assistance with driveway maintenance, a list of local contractors is available on our website.

To ensure the safety of all road users and our crews, please do not plow snow across the road or pile it in the County right-of-way (including ditches). This practice creates dangerous ridges that can freeze and pose serious hazards. Additionally, it is a fineable offense per *Public Highway Development Act*, Section 43 (1).

Thank you for your cooperation in keeping our roads safe this winter!



Other Information

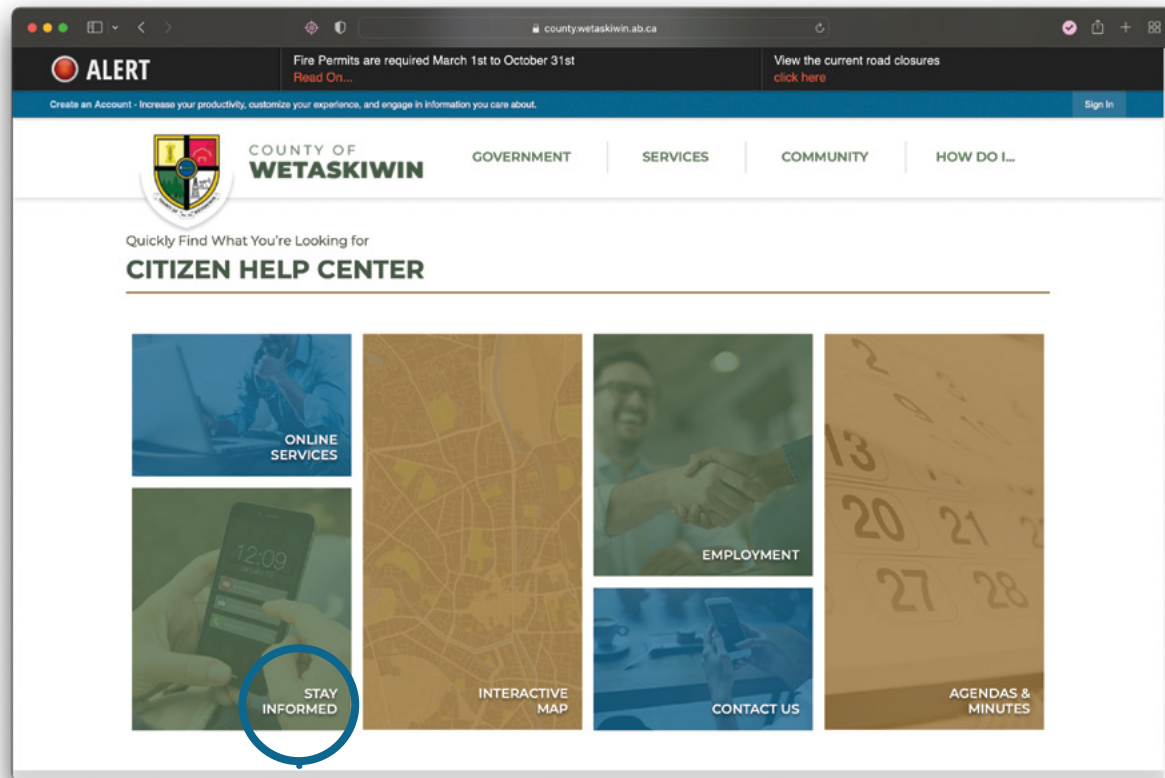
Notify Me

In an effort to increase communication, the County has refreshed our Notify Me categories on our website.

www.county.wetaskiwin.ab.ca/notify

Sign-Up to Stay Informed

Stay informed about Council meetings, public hearings, community events, construction projects, and more. Through the Notify Me service, residents can sign up to receive a variety of notifications directly via email or text message.

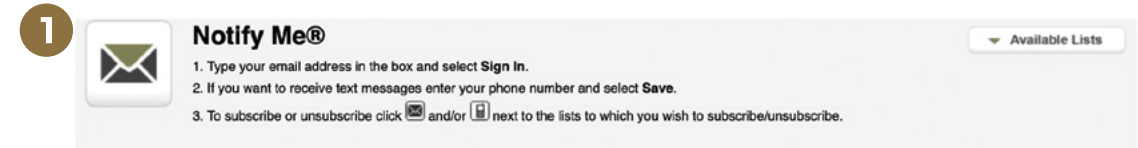


Click here to sign-up for notifications

Sign-Up Online

1. Enter your email address and click sign in.
2. If you would like to receive notifications by text message instead of email click the box below and enter your phone number and select save.

If you need help signing up call
780-361-6220 or email
nfinseth@county10.ca



Please sign in to subscribe, unsubscribe, or manage your subscriptions

Email Address

2 Your Profile Information

Email Address
john.smith123@gmail.com

I prefer to receive HTML emails when available

I would like to be able to receive text messages on my mobile phone

Phone Number
780-123-4567

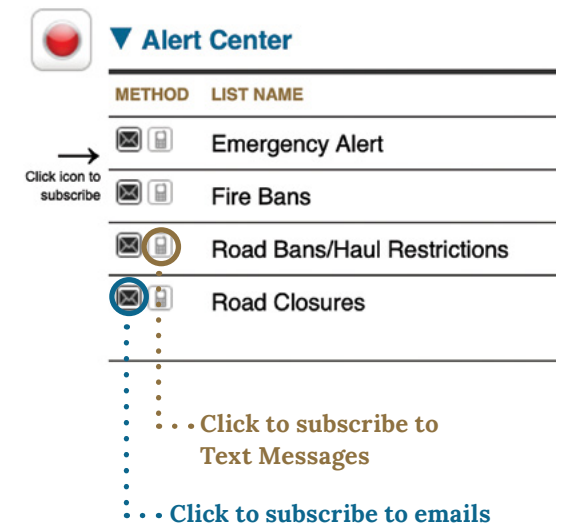
Ex: 555-555-0123. Standard text messaging rates apply.

Click Icon to Subscribe

To subscribe select the icon next to the name of the category you would like to subscribe to.

1. Select the **envelope** to subscribe for **emails** OR select the **phone** to subscribe to **text messages**.
2. Once you subscribe to the topics you want to see notifications about, you will receive an email confirming your subscription.

*You can unsubscribe or add subscriptions at any time.



Staff Directory

Main Office/General Inquiries

780.352.3321 or 1.800.661.4125

Public Works Call Centre

780.361.6241

Complaint & After Hours Dispatch

780.352.0005 or 1.800.665.0338

Newsletter Design

Anna Kraemer | annakraemer.ca



Scott MacDougall
Chief Administrative Officer (CAO)
smacdougall@county10.ca
780.361.6225



Jeff Chipley
Assistant CAO
jchipley@county10.ca
780.361.6223



Stephen Majek
Director of Agricultural Services
smajek@county10.ca
780.361.6226



René Boutin
Director of Assessment Services
rboutin@county10.ca
780.361.6233



Naomi Finseth
Manager of Communications and Strategic Initiatives
nfinseth@county10.ca
780.361.6220



Mike Zajac
Director of Emergency Services
mzajac@county10.ca
780.361.6240



Eric Hofbauer
Director of Finance
ehofbauer@county10.ca
780.361.6228



Shawna Frederickson
Manager of Information Services
sfrederickson@county10.ca
780.361.6229



Geoff Lynch
Director of Leisure & Community Services
glynch@county10.ca
780.361.6227



Richard Horncastle
Director of Economic Development
rhorncastle@jedialberta.com
780.361.6231



Shawn Hipkiss
Director of Planning & Economic Development
shipkiss@county10.ca
780.361.6235



Neil Powell
Director of Public Works
npowell@county10.ca
780.361.6241



Dallas Vikse
Public Works Manager of Operations
dvikse@county10.ca
780.361.6241



Christopher Kilosky
Utilities Manager
ckilosky@county10.ca
780.361.6241



County of Wetaskiwin No. 10

Mailing: Box 6960

Wetaskiwin, AB, T9A 2G5

243019A Hwy 13

Phone: 780.352.3321 Fax: 780.352.3486

www.county.wetaskiwin.ab.ca

facebook.com/wetaskiwincounty

Find us on LinkedIn @ County of Wetaskiwin