

2023 SPRING NEWSLETTER



County of Wetaskiwin No. 10

Mailing: Box 6960

Wetaskiwin, AB T9A 2G5

243019A Hwy 13

Phone: 780.352.3321 Fax: 780.352.3486

www.county.wetaskiwin.ab.ca

facebook.com/wetaskiwincounty



Table of Contents

Agriculture



05

06

Agricultural Services

09

ALUS

Community



13

14

County Council

16

Wetaskiwin Open House

Buck Lake Open House

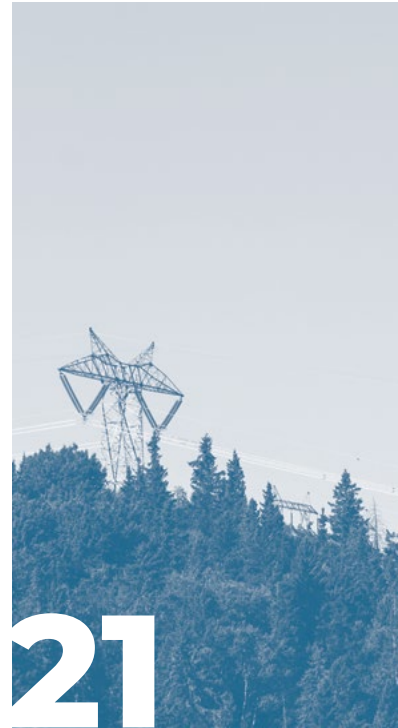
17

Community Engagement

18

FCSS

Financial



21

22

Assessment Map

Councilor Salary & Benefits

23

JEDI Newsletter

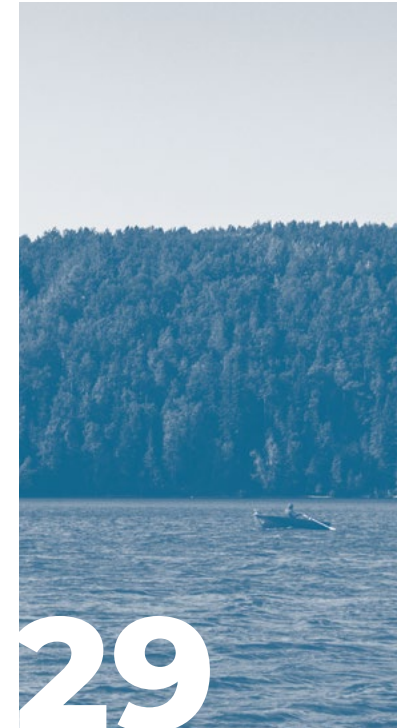
24

Budget 2023 Overview

27

UAPP

Recreational



29

30

County Campgrounds

32

County Day Use Areas

33

Rec Programming

Services



35

36

Fire Guardians

38

Planning & Development

40

Bylaw Enforcement

Ice/Water Rescue

42

Protective Services

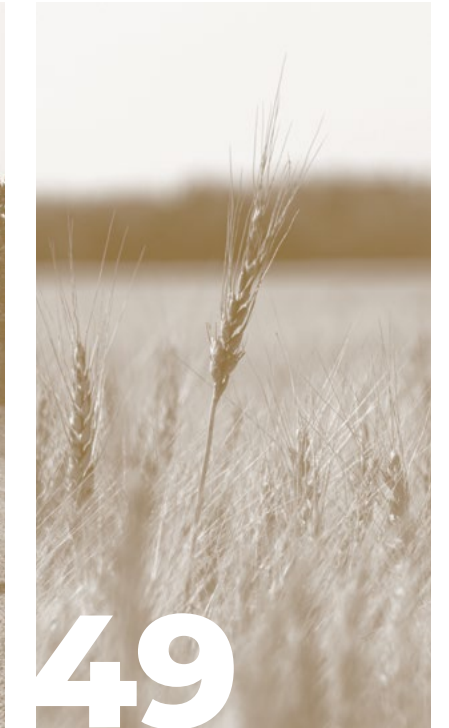
44

Transfer Station

46

Public Works

Other Information



49

50

Notify Me

52

Staff Directory

Message from the Reeve

The spring newsletter is my favorite communication to write. There is just something about the days getting longer and temperature warming up that reminds me of just how grateful I am to be living here in this County and Province. Council often debates who lives in the best Division, but nobody seems to win. The truth is, I have travelled to all corners of the County and can see that each area has its own unique attributes that make it the “best” place to live, work and play. To further this, we have been working on several things to make the County even better for everyone.

Did you hear the news?

Council has passed the final budget for 2023 in December of 2022. This marks the first time that a final budget has been passed before the new year begins. An interim budget had always been used which would allow business to continue in the new year until a final budget is passed. That old process caused there to be an overlap with the year end audit which pushed the final budget preparations further into the new year leaving little time to make changes to the current year's

expenditures. Often, we were not able to adjust allocations within the budget because by that time some line items had already been spent. We are proud of the work the entire team has done to accomplish this change and look forward to the efficiency this creates.

After 2 years of preparation, engagement, and referrals, we are pleased to announce the approval of your new Municipal Development Plan (MDP). Through 6 open houses and several revisions, the MDP finally made it to a Public Hearing and subsequently passed at the next Council Meeting. Public participation was at an all-time high and we are grateful for everyone who attended an open house or submitted a response. The only way we can deliver on your community goals is to hear from you directly. There will be many more opportunities for public engagement in the future and we would encourage you to take the time and let your voice be heard. As always, everything you need to know about the County can be found on our website. If you prefer you can also sign up for the “Notify Me” (page 50) or subscribe to our

Facebook page. Every Council meeting date is posted on the website and the Council agenda package is available for you to review. Upcoming public engagements and public hearings are being added frequently so make sure you check in regularly. Council meetings are typically occurring every 2 weeks and are open to the public either in person or virtual. Please contact Administration at least 24 hours prior for the meeting link.

The County has been working with Wetaskiwin Regional Public-School Board and Administration to develop a stronger relationship. We both have a vision to enhance our communities with a focus on building programs and events through shared resources and collaboration. The opportunity to work together is endless and we are sure you will start to see the results of this initiative very soon throughout the County.

We have many other projects in the works for 2023 including:

- Updating the rural road study and capital plan.

- Investigating a new tax-incentive bylaw for larger new and expanded Non-Residential developments.
- Strategic Planning for the new direction of JEDI (our economic development organization)
- 3rd party dust control and salt free alternative pilot project
- Parks and open spaces plan

These are just a few of the things we are working on, but we will keep you posted as things progress. All of these projects cannot be completed without our staff, and it is my privilege to thank each and every one for their contributions to our success. Council has set expectations and priorities far exceeding the resources we provide to Administration and would like to commend you on your ability to deliver results through it all.

We look forward to another great year and hope to see everyone out at our Open House BBQs!

– Reeve

Josh Bishop



5

Agriculture

Agricultural Services

Pest Control

Agricultural pests and nuisances are defined under the Alberta *Agricultural Pests Act* as any animal, bird, insect, plant, or disease which negatively impacts agricultural production. The County of Wetaskiwin is responsible for protecting the agricultural productivity in the municipality by controlling native and introduced pests. Private landowners are responsible for controlling pests on their properties.

The County provides various control techniques. Visit the County website Pest Control page for information on pests and pest control.

Beaver Dam Removal

The County hires a trapper each year for the removal of beaver, the destruction of beaver dams, and unplugging culverts affecting County infrastructure. Blasting may occur as early as April and continue until mid-November or freeze-up. If a road allowance is affected due to beaver activity on private land(s), trapping of beaver and blasting beaver dams may take place provided proper written permission is obtained.

Horticultural Survey

In the fall we asked you to let us know what sorts of Horticultural topics you wanted to learn more about. The response was overwhelming and your feedback so insightful in planning and delivering programming for the upcoming season and beyond. Watch your inboxes this spring for an exciting newsletter about what our Horticulturist has “growing on” for you. Do you have any interesting photos of plants or insects from the County that you would like to feature here? Perhaps you need some specific answers about your garden or trees? Please send your photos and questions to nlancaster@county10.ca to be included in the upcoming newsletters.



Mountain Pine Beetle

The government of Alberta has reported beetle numbers are down and “sharply declined for the fourth consecutive year.” Control measures are proving to have an impact on many areas of the province, but we are not in the clear yet and must remain vigilant in our efforts. Management and control will remain a priority for areas such as Banff National Park, Bow Valley, Kananaskis Country and Crowsnest Pass.



Thanks to the generosity of Alberta Agriculture & Forestry, we will have verbenone pouches for sale. Verbenone is a synthetic anti-aggregation pheromone that helps protect susceptible trees as the beetles make their flight in mid-July. If you are interested in purchasing verbenone and not on our list or if you have question about the Mountain Pine Beetle program, please contact Nicole Lancaster, Horticulturist at **780.352.3321**.

Roadside Mowing

There are 2,400 miles of grass to be mowed along County managed roads. In 2021 and 2022, the County contracted approximately 1,200 miles to be mowed while the County mowed the other 1,200 miles themselves. The County mows all its roads (paved or graveled) with 15' mowers. This program starts in August and is usually completed by the end of September.

Mowing Subdivisions, Hamlets, Transfer Stations, Lagoons, and County Properties

The County mows all Subdivisions, Hamlets, Transfer Stations, Lagoons, and County Properties once per year using a 10' mower. This program starts at the beginning of July and is completed by the end of August.



Horticultural Services

Our Horticulturist is here to offer support to County of Wetaskiwin residents with plant, insect and disease needs and may be able to assist with funding opportunities on specific projects.

Contact Us

Director of Agricultural Services

Stephen Majek
780.361.6226
smajek@county10.ca

Sustainable Agriculture/ALUS Program

Kim Barkwell
780.387.6182
kbarkwell@county10.ca

Horticulturist

Nicole Lancaster
780.352.3321 ext. 2290
nlancaster@county10.ca
*Available seasonally from
April 1- October 31*

Roadside Spraying

In 2022, spraying roadside ditches on all range roads north of Highway 13 in the County was completed on July 20, 2022. A second crew spot sprayed the entire right of way of Highway 20, Highway 616 West of Millet to Highway 2 overpass and Highway 795 from the Correction Line north to the County Boundary. Administration and Alberta Transportation have opened discussions on the contract spraying highways within the County of Wetaskiwin.

In 2025, the County of Wetaskiwin will no longer be providing a “No Spray Program”. Producers wishing to prevent the use of herbicide along their property can continue to manage the vegetation by mowing, picking, cutting or removing any noxious or prohibited noxious weeds. For future information, please contact Stephen Majek, Director of Agricultural Services at **780.361.6226**.



Weed Inspection

The County of Wetaskiwin has been delegated the authority by the Province of Alberta, under the *Weed Control Act*, for weed control, inspection, and enforcement within its boundaries. The Agricultural Service Board of the County of Wetaskiwin performs these services on all properties in the County of Wetaskiwin. The Service Board hires Weed Inspectors from May until September to perform these duties, including issuing a Weed Inspection Report or Weed Notice, as required.

What are Prohibited Noxious and Noxious Weeds?

Prohibited Noxious Weeds are plants designated in accordance with the *Weed Control Act* and includes the plant's seeds. Under the Act, a person has the responsibility to destroy prohibited noxious weeds. There are 46 weeds designated prohibited noxious, and those found in the County of Wetaskiwin include Orange and Meadow Hawkweed.

Noxious Weed are plants designated in accordance with the *Weed Control Act* and includes the plant's seeds. There are 29 weeds designated as noxious, and those found in the County of Wetaskiwin include Tall Buttercup, Scentless Chamomile (Mayweed), White Cockle, Oxeye Daisy, Field Scabious, Perennial Sow Thistle, Leafy Spurge, Common Tansy, Canada Thistle and Yellow Toadflax.

What authority does a Weed Inspector have?

An Inspector has the authority, under the *Weed Control Act*, to perform duties which include inspecting private land and property, but not dwellings or barns unless invited by the landowner.



Orange Hawkweed

How does a Weed Inspector get access to private property?

Section 12 of the *Weed Control Act* explains an Inspector's rights as follows:

- Entry and inspection power
- 12(1) An inspector may enter land or inspect land or personal property at a reasonable time
- To monitor compliance with this Act, including making inquiries, taking samples, or performing tests.

What is the difference between a Weed Inspection Report and a Weed Notice?

A Weed Inspection Report is a document used by the County of Wetaskiwin to inform the landowner that they have Prohibited Noxious or Noxious Weeds on their property that should be eradicated or controlled. This report along with a weed fact sheet, herbicide application directory, herbicide controls for weeds and County equipment rental information sheets are sent to the landowner.

A Weed Notice is a legal document that is issued to landowners when they do not control their Noxious or eradicate their Prohibited Noxious Weeds. When a Weed Notice is received, the instructions on the Weed Notice must be followed by the date specified on the Notice.

Failure to comply with a Weed Notice by the specified date allows the County or its Contractor to perform the necessary control measures, at the landowner's expense.



FARMERS & RANCHERS NEEDED


ALUS helps farmers and ranchers build nature based solutions on their land



WE HELP ESTABLISH

- ✓ Riparian Fencing
- ✓ Alternative Watering Systems
- ✓ Enhanced Wetland Buffers
- ✓ Grassed Waterways



 kimb@leduc-county.com

 ALUSWETASKIWINLEDUC.CA

 Kim Barkwell
ALUS Coordinator
780 387 6182

What is ALUS and how does it benefit our community?

ALUS Wetaskiwin-Leduc is a local program managed through the County of Wetaskiwin and Leduc County's sustainable agriculture program and has collaborated with ALUS national since 2016. Since inception, 41 participants have enrolled 1164 acres in the ALUS Wetaskiwin-Leduc program.

ALUS (originally an acronym for Alternative Land Use Services) is a national charitable organization that provides expertise, resources, and direct financial support to 35 communities across 6 provinces where more than 1,400 farmers and ranchers establish and steward nature-based solutions on their land.

These solutions deliver ecosystem services to help sustain agriculture and provide nature's benefits to communities and future generations. Projects such as enhanced wetlands, windbreaks, riparian buffer zones, wildlife habitats, adaptive agricultural practices and other impactful environmental solutions produce cleaner air, cleaner water, greater biodiversity, carbon sequestration, erosion control, flood and drought mitigation, pollinator and wildlife habitat, and other ecological services

The ALUS program rests firmly on eight core principles and local communities use these principles to guide their programs. Learn more at ALUS.ca or www.county.wetaskiwin.ab.ca/alus.

ALUS is voluntary and farmer delivered. ALUS cost shares with the producer on project establishment and provides annual management and maintenance payments to farmers and ranchers to ensure ongoing project stewardship. Common ALUS Wetaskiwin-Leduc projects include fencing to manage livestock access to creeks and wetlands and alternative watering systems. A livestock crossing, grassed waterway, native grass establishment and eco-buffer planting are other project examples.

Kim Barkwell is the ALUS Wetaskiwin-Leduc program coordinator, and she would be happy to discuss any details regarding the program. Contact Kim at kbarkwell@county10.ca or by calling 780.387.6182.





02

Community



County Council 2023

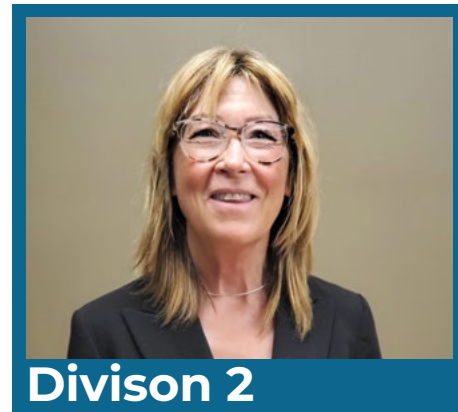


Division 1

Bill Krahn

bkrahn@county10.ca

780.312.4226 (C)



Division 2

Lynn Carwell

lcarwell@county10.ca

780.352.0589 (H) 780.312.0119 (C)



Division 3

Dale Woitt

dwoitt@county10.ca

780.352.7429 (H) 780.360.2737 (C)



Division 4

Josh Bishop

Reeve

jbishop@county10.ca

780.387.8483 (C)



Division 5

Ken Adair

kadair@county10.ca

780.352.6318 (H) 780.361.6398 (C)



Division 6

Kathy Rooyakkers

Deputy Reeve

krooyakkers@county10.ca

780.682.2353 (H) 780.514.9087 (C)



Division 7

Lyle Seely

lseely@county10.ca

780.388.3894 (H)

780.621.1044 (C)

You are invited to the Wetaskiwin Open House!

When

Friday, May 5, 2023
11:00 a.m. – 2:00 p.m.

Where

Located at the County Office
across from the Reynolds
Alberta Museum

What

Free BBQ
Prizes
Fun for the whole family

You are invited to the Buck Lake Open House!

When

Friday, August 25, 2023
Tax Collection:
9:00 a.m. – 3:00 p.m.
Open House:
11:00 a.m. – 2:00 p.m.

What

Free BBQ
Prizes
Fun for the whole family

Where

Located at the Buck Lake
Community Hall

Community Engagement

Did you know?

Council Meetings

- Members of the public are welcome to attend open sessions of Council meetings either in person or electronically.
- Members of the public can register to speak as a 'delegation' by contacting the Chief Administrative Officer in advance of the meeting or if directed by Council.
- Council meetings are typically held every other Tuesday at 9:00 a.m. in Council Chambers at the County Office.
- Agendas, minutes, and past meetings are posted to the County Website under 'Agendas & Minutes' in our Citizen Help Centre.

Public Hearings

- Public Hearings are for Council to hear feedback directly from residents and affected parties and are a requirement under the *Municipal Government Act* for certain Bylaws and Resolutions.
- Advertisement for all Public Hearings is done for two (2) weeks ahead of the meeting on the County Website and Facebook page, including details of the issue and details for public participation.

How you can stay informed

- Get notifications sent to you by subscribing under 'Notify Me' in our Citizen Help Centre on the County Website <https://www.county.wetaskiwin.ab.ca/notify>
 - Subscribe to Council Meeting Dates under Calendar
 - Subscribe to Public Hearings under News Flashes /County of Wetaskiwin News
- Visit the County Website at www.county.wetaskiwin.ab.ca
- Follow us on Facebook at facebook.com/wetaskiwincounty
- Call the County Office at **780.352.3321**.
- Visit the County Office at 243019A Highway 13.

Social Needs Assessment

In 2022, the County of Wetaskiwin conducted a Social Needs Assessment to determine the needs of residents and youth in our community. This Assessment involved the development of a community profile, a review of key documents, and the collection of data through a comprehensive engagement process consisting of:

- 91 resident surveys,
- 149 youth surveys,
- One working session with 21 agency and community organization staff and volunteers,
- 18 in-depth interviews with representatives from human service and non-profit agencies across the County of Wetaskiwin and the surrounding jurisdiction.

The information assembled during this assessment was summarized into findings and key themes. These findings and key themes suggested that a significant number of social needs within the County can be addressed if the following nine (9) priority areas are attended to.

Mental Health	Affordable Housing
Connections & collaborations amongst agencies	Isolation & Loneliness
Basic Needs	Seniors Supports
Substance Use & Addictions	Communications
	Bullying & Abuse

Visit www.county.wetaskiwin.ab.ca to view the complete Social Needs Assessment and read more about the nine (9) priority areas identified by our Community. The County of Wetaskiwin will use this document for strategic planning of annual FCSS programs and services.

The Babysitters Course

This babysitter training course teaches kids to confidently handle the responsibilities of being a babysitter.

- Maximum 9 registrants per session
- Students must be 12 or turning 12 within 6 months of the date of the course to register
- This course includes: Canada Safety Council Manual, Certificate & Wallet Card
- Lunch is not provided. Please bring a bagged lunch

June 14, 2023

Location:
Lakedell Ag Society
Time:
9:00a.m – 4:00p.m
Cost: \$20.00

June 19, 2023

Location: Wetaskiwin Ag Society “Barn”
Time:
9:00a.m – 4:00p.m
Cost: \$20.00

The Home Alone Course

This safety awareness program is for children who are or will be staying home on their own for short periods of time.

- Maximum 9 registrants per session
- Afternoon sessions available with interest
- Students must be 9 as of the date of the course to register

June 15, 2023

Location:
Lakedell Ag Society
Time:
9:00a.m – 4:00p.m
Cost: \$20.00

June 22, 2023

Location: Wetaskiwin Ag Society “Barn”
Time:
9:00a.m – 4:00p.m
Cost: \$20.00

Register online at: cksafetycourses.com
If you have any questions, please contact:
780.352.3321 or fcssadmin@county10.ca

Visit a Library Today!

The county is home to these great resources which offer unlimited information and ongoing programming.

Alder Flats Buck Lake

✉ alderflatslibrary@yrl.ab.ca
🌐 www.alderflatslibrary.ab.ca
📞 780-388-3881
📍 Alder Flats/Buck Lake Public Library

Pigeon Lake

✉ pigeonlakelibrary@yrl.ab.ca
🌐 www.pigeonlakepubliclibrary.ab.ca
📞 780-586-3778
📍 Pigeon Lake Library Happenings

Winfield Community

✉ winfieldlibrary@yrl.ab.ca
🌐 www.winfieldlibrary.ab.ca
📞 780-682-2498
📍 Winfield Community Library

To watch for upcoming programs, please like and follow the Library's Facebook pages!

Free! Seniors Day

A full day workshop to celebrate our seniors!
Enjoy some great speakers and a lot of laughs!
Lunch is provided.

June 7, 2023
Breton Community Centre
9:30AM-3:00PM

Register with one of the following:

Breton & Area FCSS

✉ fcss@breton.ca
📞 780-696-3636

Warburg FCSS

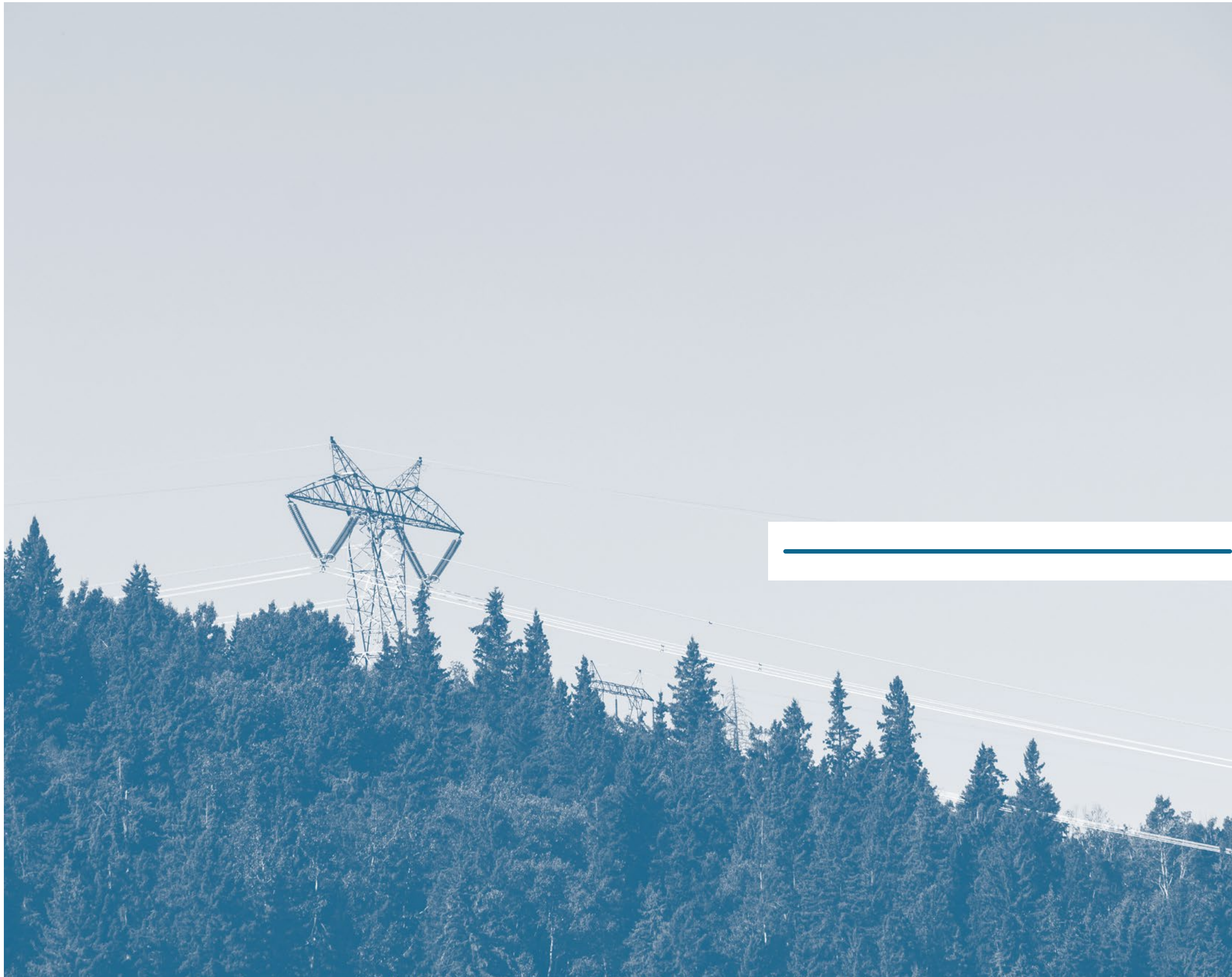
✉ fcss@warburg.ca
📞 780-848-2828

County of Wetaskiwin FCSS

✉ fcssadmin@county10.ca
📞 780-352-3321

Registrations CLOSE June 1, 2023

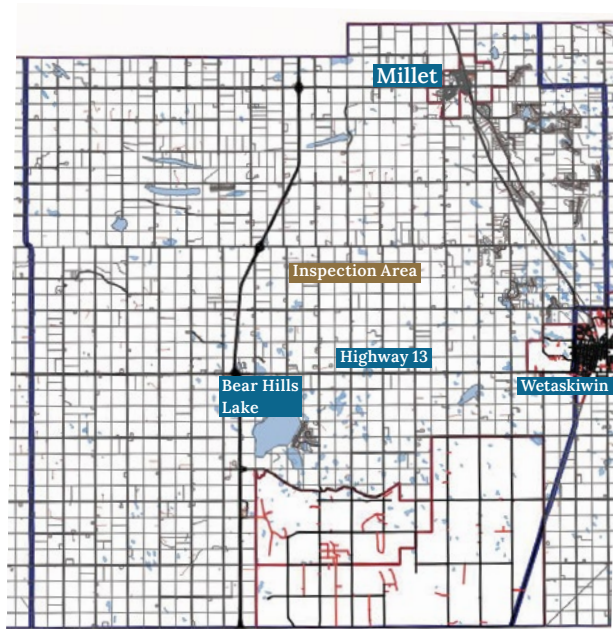




03

Financial

Assessment Map



The County of Wetaskiwin No. 10 re-inspects all properties on a five-year cycle based on best practice requirements as set out by Alberta Municipal Affairs Assessment Services Branch. Shown on the map are the respective areas for 2023 inspections. Additionally, a request for information has been mailed out to the 2023 re-inspection area in the fall of 2022 to expedite the inspection process. Annual inspections (reviewing new and progressive construction) are also being conducted throughout the County. The County requests your co-operation in assisting the assessors with any information necessary to complete the assessments or re-assessments in your area. All County staff will always carry identification which may be asked for if there is any question. Should you have any questions please contact Rene Boutin, Director of Assessment at **780.361.6233**.

Council Salaries 2022

	Salary	Benefits & Allowances	Total 2022	Total 2021
Division 1	\$52,133.00	\$13,070.00	\$65,203.00	\$66,051.00
Division 2	\$52,133.00	\$13,070.00	\$65,203.00	\$66,199.00
Division 3	\$52,133.00	\$13,710.00	\$65,843.00	\$66,265.00
Division 4 (Reeve)	\$59,878.00	\$10,535.00	\$70,413.00	\$70,230.00
Division 5	\$52,133.00	\$13,070.00	\$65,203.00	\$66,051.00
Division 6	\$52,133.00	\$13,710.00	\$65,843.00	\$66,692.00
Division 7	\$52,133.00	\$13,710.00	\$65,843.00	\$66,692.00

www.JEDIALBERTA.com

Spring 2023

NEWSLETTER

Joint Economic Development Initiative

JEDI is here to guide you in business

JEDI provides tools for County of Wetaskiwin businesses & agriculture producers to succeed! If you would like to be included in JEDI's e-mail list for upcoming seminars & events as well as funding & business resources please e-mail and/or follow JEDI on Social Media.

jmiller@jedialberta.com

@JEDIAAlberta

www.JEDIAAlberta.com

P: 780.335.5334



"To plant a garden is to believe in tomorrow." -Audrey Hepburn

New Year, New Vision for JEDI

The JEDI organization is pleased to have the opportunity to continue to work with the County of Wetaskiwin as its main provider for economic development services. We will be expanding JEDI's mandate of industrial and agricultural production and processing to a broader community economic development scope which will also include retail, commercial and tourism businesses. JEDI Staff look forward to collaborating with the County of Wetaskiwin, community organizations and businesses to diversify the local economic base and execute defined actions to improve the local business climate.

2023 Chamber Business Awards Gala - Ag & Food Business of the Year Wetaskiwin - Award Recipient

JEDI was proud to sponsor the Ag & Food Business of the Year award at the Leduc, Nisku & Wetaskiwin Regional Chamber's annual Business Awards Gala held on March 11th. Congratulations to the County of Wetaskiwin's very own Fifth Gen Gardens.

Fifth Gen Gardens is operated by Kristin Graves a 5th generation farmer from south-east of Wetaskiwin. Kristin offers locally grown garlic & fresh produce. For more information <https://www.fifthgengardens.ca/>.



2023 Chamber Business Awards Gala - Tourism & Hospitality Business of the Year Wetaskiwin - Award Recipient

Edmonton International Raceway was named Tourism & Hospitality Business of the Year. If you are looking for family-friendly entertainment right here in the County of Wetaskiwin, be sure to check out <https://www.edmontonraceway.com/> for the 2023 Race Season Schedule. Racing begins on June 3rd, 2023!

Photo Courtesy of Leduc, Nisku & Wetaskiwin Regional Chamber

Business Visitation Program

JEDI will continue its ongoing business retention and expansion (BR&E) visitation program this year. This will include connecting with retail, commercial and tourism businesses as well as continuing to foster relationships with industrial and agricultural businesses in the region. Businesses wishing to schedule a business visitation please contact Joan at jmiller@jedialberta.com or 780.335.5334.

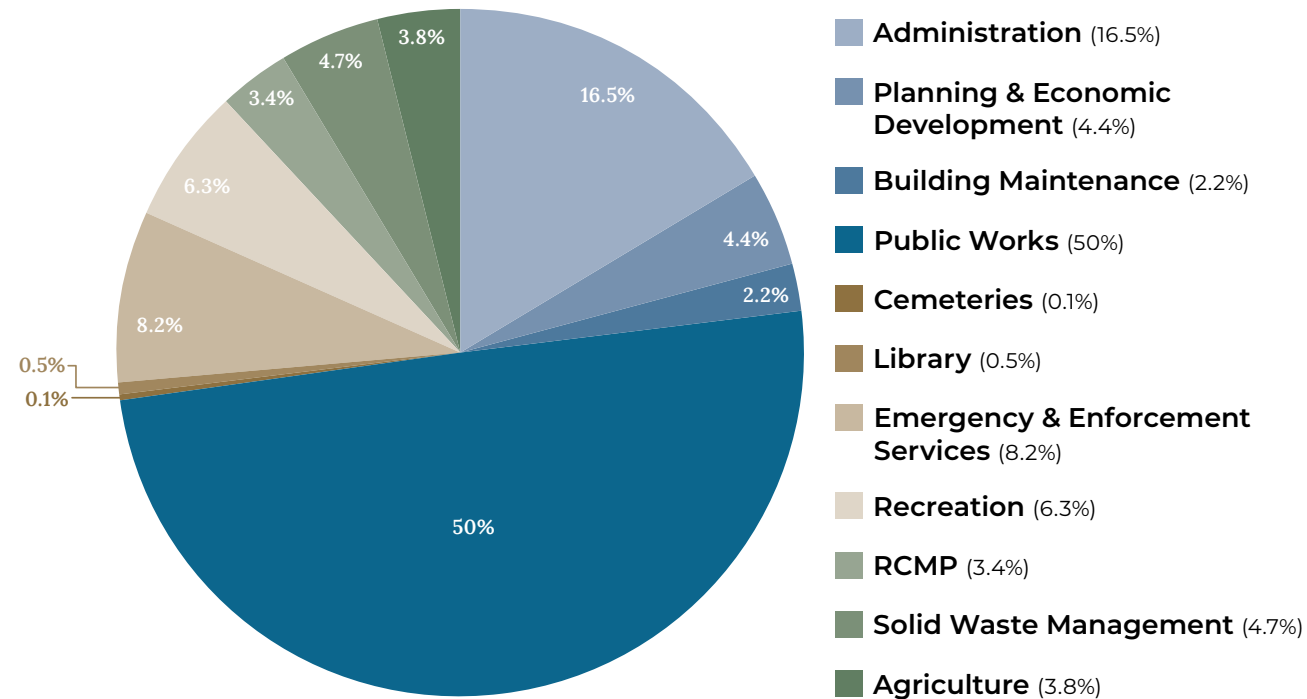
JEDI Regional Profile Update

JEDI is working on an updated Regional Profile, the profile is a comprehensive and robust document packed full of information about the JEDI Region. Watch our website & Social Media for its release!

StartUp Leduc Wetaskiwin Regions Entrepreneurial Development Program

JEDI is pleased to partner in this great program, visit <https://startupleducwetaskiwin.biz/> for more info.

Budget 2023 Overview



On December 20, 2022, Council approved the Operating and Capital Budget for 2023. Overall, the total budget for the County of Wetaskiwin is \$52.2 million with \$23.7 million coming from municipal tax support.

Regarding the \$52.2 million, this amount covers all expected municipal operations, capital projects and requisitions that the County collects on behalf of the Wetaskiwin and Area Lodge Authority for seniors housing facilities and Government of Alberta for education and provincial RCMP costs. In 2023, the provincial RCMP costs will increase from \$534,077 to \$783,659.

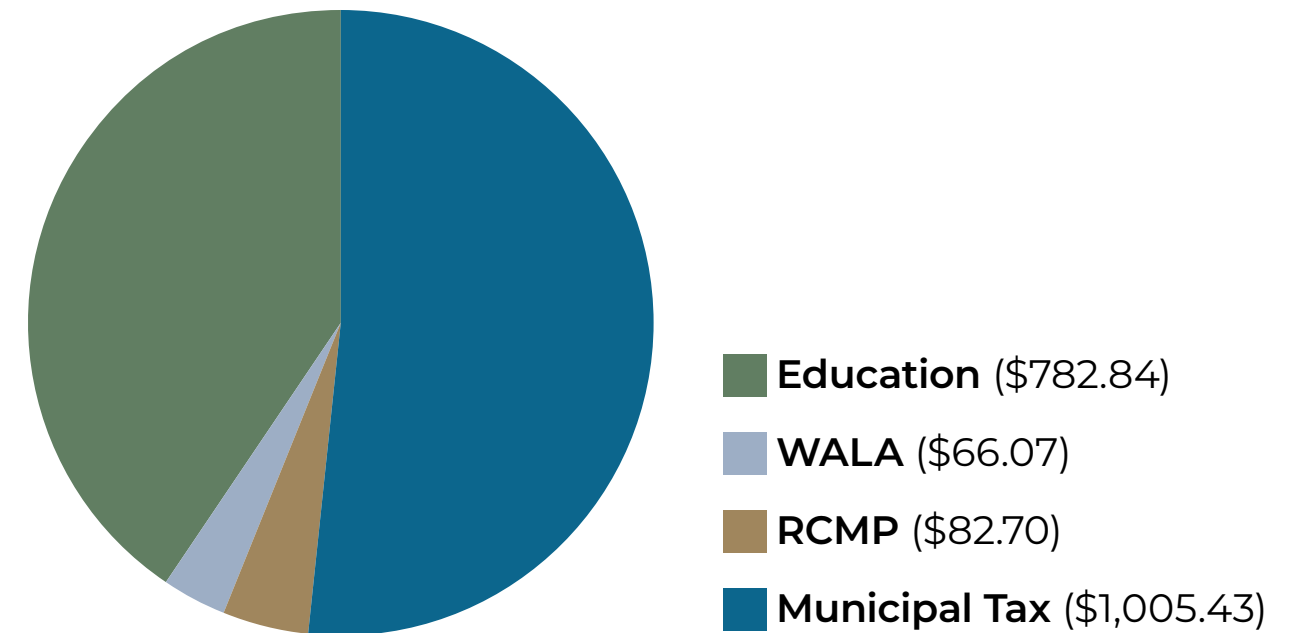
The County budget focuses on the Level of Service provided to ratepayers based on specific

measurables. For example, Council has set the following measurables:

- Snowplowing to be completed within 72 hours after a snowfall.
- Permitted development permits shall be completed within 14 days of the application being deemed complete.

Setting measurables is in its infancy and will be developed fully over the next couple of years. Focusing on Level of Service makes it easier for Council and staff to answer the age-old question of ‘what do I get for my taxes’. Moving forward Council is working to approve more long-range capital plans in order to help predict future budget requirements more accurately.

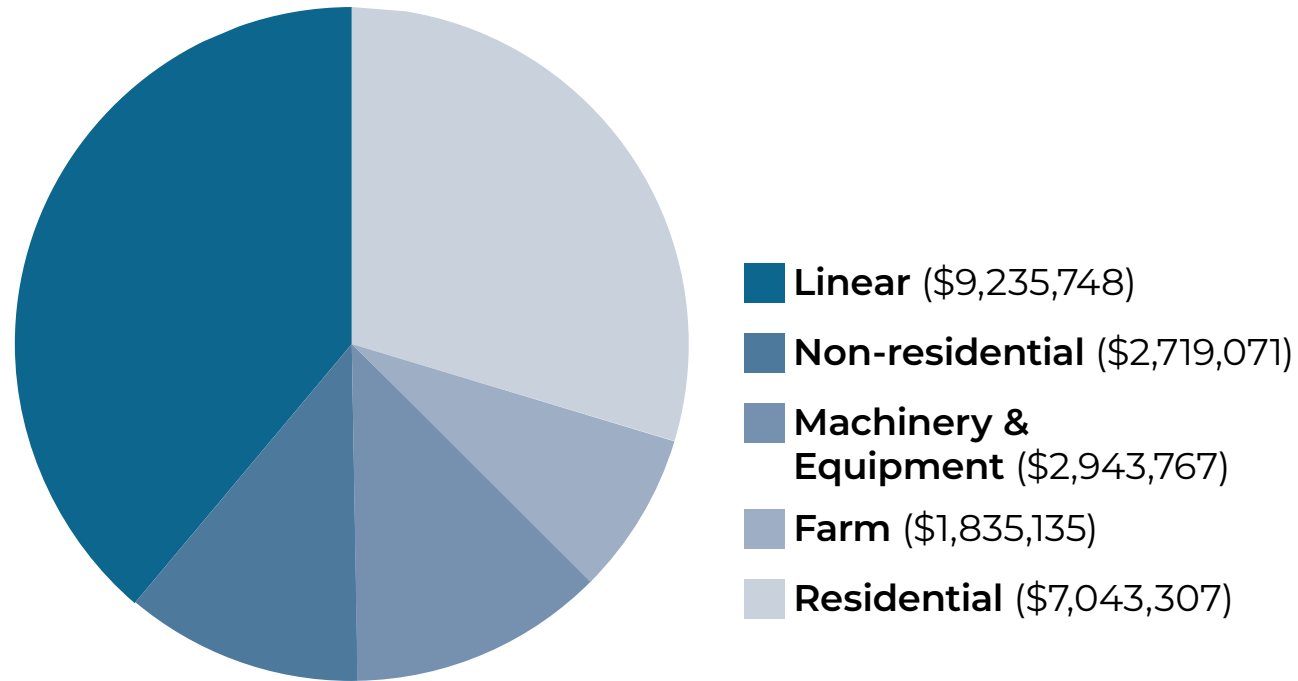
Average Residential Tax



Overall, the average residential municipal taxes (based on a \$315,000 assessment) will increase by 3.99% which includes the increase from the Government of Alberta for RCMP funding. Below is a graph that displays the break down of where your taxes go for an average residential taxpayer. The average residential municipal taxpayer will pay \$1,937.04 in 2023. The graph below shows how those tax dollars are divided up for:

- Municipal Tax
- Education Tax
- RCMP
- Wetaskiwin and Area Lodge Authority (Seniors Housing)

2023 Municipal Tax Totals



Who does the County collect taxes from?

Residential: Any property that is not classified as farm land, machinery and equipment or non-residential

Farm: Land used for farming operations

Linear: Includes any pipelines, oil and gas wells, electric power systems, telecommunication systems or cable systems.

Non-Residential:

Includes commercial and industrial buildings, oilfield structures, aggregate pits and land that is used or zoned for commercial or industrial uses.

Machinery & Equipment:

Includes any materials, devices, fittings, installations, appliances, apparatus, or tanks that form an integral part of an operational unit intended for or used in manufacturing or processing.

UAPP

Utility Auto Payment Plan

New! Effective January 2023!

UAPP is a plan that enables you to pay your bill from the County of Wetaskiwin No. 10 for water, sewer, and waste collection through an electronic transfer from your bank account. Bi-monthly (as per schedule below), your account will be debited. You will be charged the actual utility charges for 2 months.

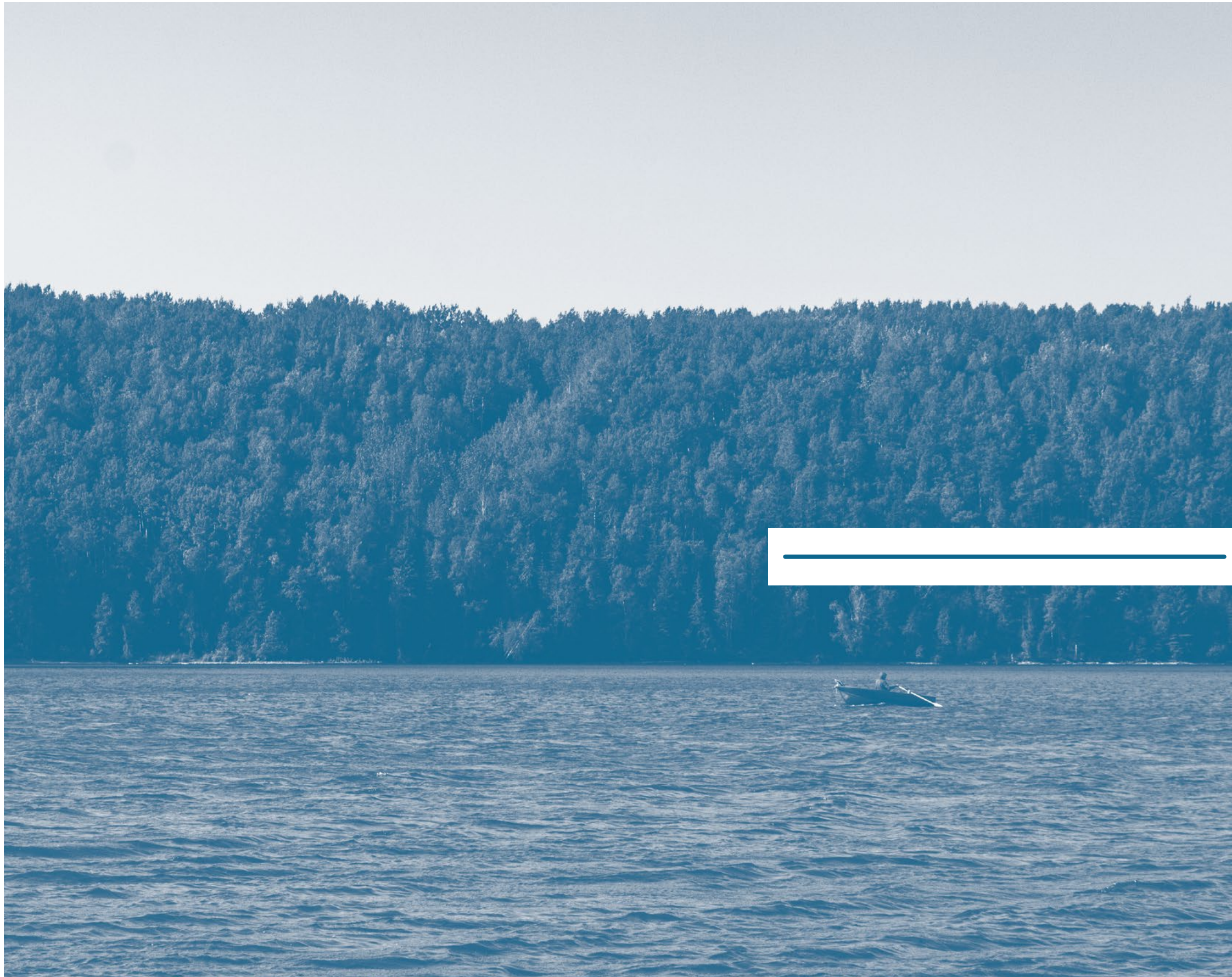
UAPP Schedule

Bill Run Month(s)	Bill Mailed By	Auto Payment Date
January & February	End of February	March 30 th
March & April	End of April	May 30 th
May & June	End of June	July 30 th
July & August	End of August	September 30 th
September & October	End of October	November 30 th
November & December	End of December	January 30 th

To register, please fill out the on-line form at:

www.county.wetaskiwin.ab.ca/uapp or for more information, email utility@county10.ca or phone 780.352.3321 ext. 2287





4 Recreational

County Campgrounds

No Reservations for Campgrounds



Battle Lake

20077A TWP RD 462A

Attendant: Carson Colby – 780.232.1203

- \$29/night
- Boating & Fishing
- No Hook Ups
- Trailer Dumping
- Pay Showers
- Restrooms
- Wood (\$10.00 per bag)



Mound Red

281077B TWP RD 452

Attendant: Greg Buck – 780.216.1141

- \$27/night
- Trout Fishing
- No Hook Ups
- Group Camping
- No Motor Boats
- Wood (\$10.00 per bag)



Buck Lake

710 Lakeshore Drive East

Attendant: Pam Anquist – 780.514.9769

- \$29/night
- Fishing
- No Hook Ups
- Trailer Dumping
- Pay Showers
- Restrooms
- Wood (\$10.00 per bag)



Red Deer Lake

440050 RGE RD 222A

Attendant: TBA – 780.352.3321

- \$24/night
- Boat Launch
- No Hook Ups
- Trailer Dumping
- Wood (\$10.00 per bag)

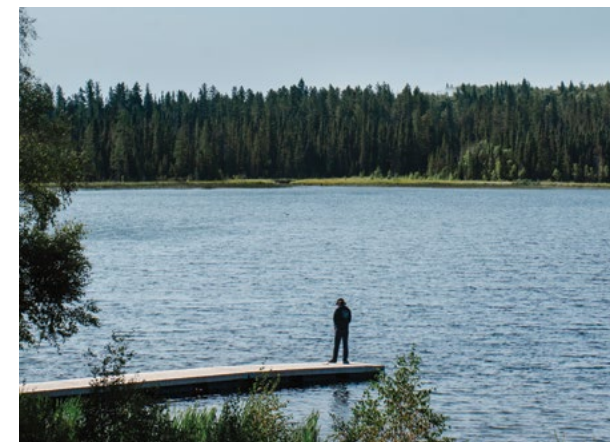


Coal Lake South

764070 HWY 822

Attendant: TBA – 780.352.3321

- \$27/night
- Boat Launch
- Fishing
- No Hook Ups
- Restrooms
- Wood (\$10.00 per bag)



Twin Lakes

461034B RGE RD 33A

Attendant: Carson Colby – 780.232.1203

- \$27/night
- Fishing
- No Hook Ups
- No Motor Boats
- Playground
- Wood (\$10.00 per bag)

All County of Wetaskiwin Parks accept cash or cheque only.

Please visit www.county.wetaskiwin.ab.ca for more Parks and Recreation information.

County Day Use Areas



Pioneer Park

Location: Hamlet of Winfield

- Shower house
- Water, sewer, power hookups
- Playground



Alder Flats Centennial Park

Location: Alder Flats (East Edge)

- Picnic Tables
- Outhouse



Viola Beach

Location: South Shore, Pigeon Lake

- Fire pits



Mulhurst Bay

Location: North Shore, Pigeon Lake

- Washroom
- Playground
- Vehicle & Trailer Parking

County of Wetaskiwin No. 10

2023 CAMPING COUPON

BUY One (1) Night, GET One (1) Night of Camping FREE (No Cash Value)
 Coupon cannot be used on a Long Weekend.

Redeemable for County of Wetaskiwin Residents at Municipal Parks including:

Battle Lake Park	Mound Red Park
Buck Lake Park	Red Deer Lake Park
Coal Lake South Park	Twin Lakes Park

Name: _____

Legal Land Description: _____

NOTE: Without valid information, this coupon is considered void and camping fees are due. One coupon per family per season.



Rec Programming



KIDS CAN CATCH EVENT

Connecting kids to nature by showing them the proper way to bait a hook and what to do once a fish has been caught. This event will teach kids how to properly care for Alberta's fish and our future.


Location: Mound Red Park
 Date & Time: TBA

Watch our website at county.wetaskiwin.ab.ca and follow our Facebook Page for further details.

Cost: FREE

County of Wetaskiwin
Recreation & Leisure



U OF A GIRLS VOLLEYBALL CAMP

Ages: 11-14 & 15-18
 Dates & Locations:

- July 14 - Buck Lake High School
- July 15 - Pigeon Lake High School
- July 16 - Wetaskiwin Composite High School

Times: 9 AM - 4 PM
 Cost: \$60
 Registration Deadline: June 30, 2023
 Maximum Registrants: 24 Participants
 Registration subject to close early.

Visit county.wetaskiwin.ab.ca for further details, call 780-352-3321 or email arecreation@county10.ca




SCAN QR TO REGISTER







35

Services

Fire Guardians

Fire Permits are **REQUIRED** from **March 1st to October 31st** and may be obtained from the Fire Guardian in your area.

An application for a Fire Permit should be made two or three days prior to the first day of burning. A Permit will be issued for a maximum ten-day period beginning from the date of issue; however certain conditions may be required in order for a permit to be issued. If an extended period is required for burning, application must be made for another Fire Permit after the first Permit is terminated.

Permission to Burn Stubble

Under the *Soil Conservation Act* the County of Wetaskiwin has the authority to issue Stubble Burning Permits. These permits are issued on an individual basis and a site inspection must be performed.

Contact the Director of Agricultural Services, **Stephen Majek at 780.361.6226 to obtain a Stubble Burning Permit.**

Your Responsibility as a Holder of a Fire Permit

1. A Fire Permit gives authority to the permittee to set a fire according to the regulations and the terms and conditions printed on the Permit. Conditions stated on your fire permit must be strictly adhered to. You may be liable for fire suppression costs or penalties as provided by law for any damage that may occur while burning without a permit, or for failing to comply with the conditions as stated on your fire permit.
2. A Fire Permit **DOES NOT** relieve the holder from the responsibility of keeping that fire under control and extinguishing, if necessary.

Division 1

Angus Ridge—Haultain
New Sweden—Gwynne

Brianna Tancock

780.312.4640

Chad Irwin

780.312.3192

Division 2

Coal Lake

Ray Boeve

780.387.6375

Tim Hoogland

780.387.8531

Division 3

Bearhills Lake—Lone Ridge—Usona

John Dargatz

780.352.1037

Ken Cherniak

780.352.4066

Division 4

Hillside—Porto Bello—Pipestone

Herb & Fay Waters

780.985.3872

Kathy Jacobi

780.352.4642

Division 5

Falun—Westerose—Mulhurst

Wayne Gist

780.361.8624

Herb & Fay Waters

780.985.3872

Alberta Agriculture and Forestry

(for permits in the Forest Protection Area)

1-403-845-8250

Division 6

Battle Lake—Winfield—Yeoford

Christine Woods

780.682.2165

Albert Brandl

780.696.2547

Charles Collisson

780.542.0943

Division 7

Buck Lake—Alder Flats

Gil Lechelt

780.388.2384

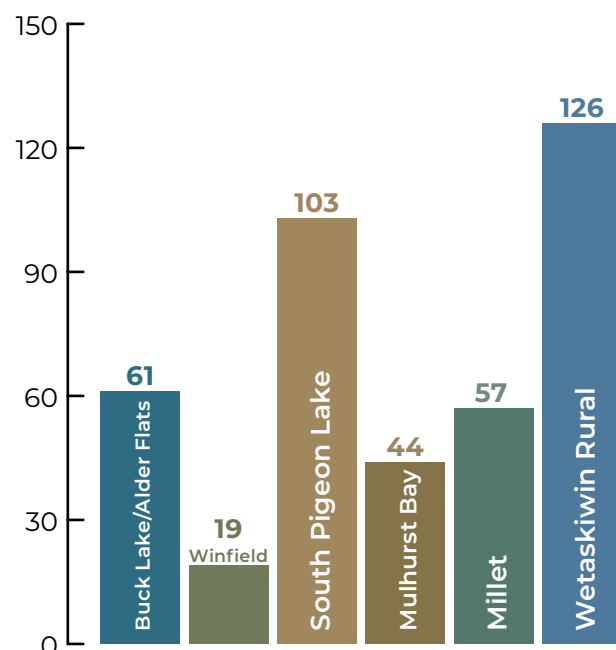
Mary Arseneau

403.612.5591

Amy Thompson

780.898.4803

Number of Calls in 2022



Planning & Development

Development Permit Application Process

Any development over 108 ft² (10 m²) moveable or not requires a development permit before work can start and is regulated by Land Use Bylaw 2017/48 and supporting policies.

The development permit process can take up to **4-6 weeks**, depending on several factors. There are many steps the Planning and Development Department need to take before beginning to process an application.

Applications are **NOT** considered complete until **ALL** of the required information and fees have been provided. An incomplete application form and/or illegible supporting information may result in the application being returned to the applicant. To view a copy of our Development Permit Application and Checklist for required documents, please visit the County website or email wpermits@county10.ca

The County understands that building a new structure can sometimes be difficult and challenging. The Planning and Economic Development Department encourages any inquires regarding developing in the County to visit the County website or email: wpermits@county10.ca in order to help streamline the development process.

Having requests in writing helps to ensure important information doesn't get missed or miscommunicated.

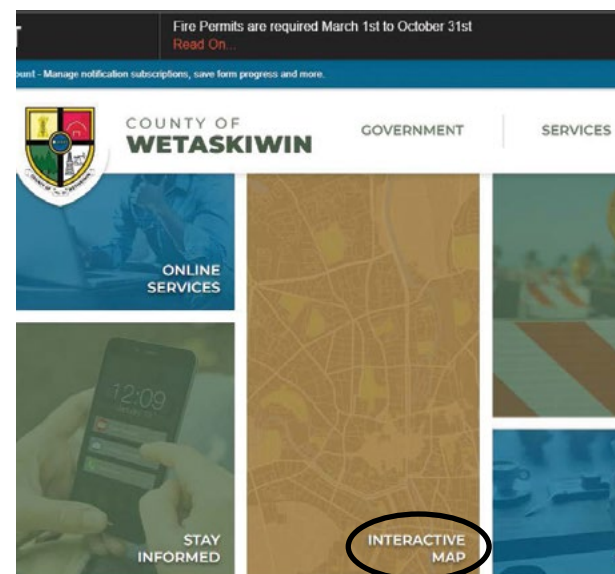
Did you know?

You can access an online digital County map and view the entire County, including your specific property by visiting the County website.

What you can search on the online digital County map:

- View aerial images of properties, roadways, parks, community facilities, and so much more.
- Take measurements for a site plan when applying for a development permit
- Roll Number
- Legal Land Location
- Address
- Parcel Size
- Zoning
- Electoral Area
- Tax and Assessment Information

How to access the online digital County map: Visit the County website: <https://www.county.wetaskiwin.ab.ca/>



Building Permits

A Development Permit is not a Building Permit. Please contact Superior Safety Codes in Edmonton **780.489.4777** or Red Deer **403.358.5545** to inquire about Safety Codes Permits for the following:

- Building
- Plumbing
- Gas
- Electrical
- Private Sewage/Septic Systems

FAQs

How do I get a development permit application? Development permit application forms are available at the County Administration Office or for download on the County website from the Development Permit page or by email request at wpermits@county10.ca

Is a development permit the same as a building permit?

No, a development permit approves what type of development is allowed on a particular property and concerns itself with zoning, setback, and height regulations of the County's Land Use Bylaw. A building permit allows the construction of structures contingent on meeting the requirements of Superior Safety Codes. In simple terms, the development permit deals with the 'what' and 'where' a development may proceed, and the building permit deals with 'how' it is built.

Does the County issue business licenses?

No, the County does not issue business licenses; however, a development permit is required for business operations in the County. For a copy of our Development Permit Application, please visit the County website or email wpermits@county10.ca

Do I need a development permit if I'm doing renovations?

No, a development permit is not required if you are doing renovations. A development permit is only required if you are changing the use or square footage of a building.

When can I start construction on my development?

You may begin your development after a development permit has been issued by the County. For discretionary uses, there will be a 21-day appeal period after the issuance of the Notice of Decision, and only after this period is over will the development permit be effective.

For more information on development permits, please visit the county website.

Bylaw Enforcement

Unightly Properties

Complaints regarding unightly properties are frequently received by the County. Tall grass requiring cutting, accumulated garbage bags waiting to be taken to the transfer station, or an old appliance waiting to be picked up as scrap metal are issues easily remedied by the property owner.

Larger unightly issues, where the matter has been ongoing for some time, are undertaken as a collaborative effort with the property owner, setting achievable benchmarks and goals to move through the clean-up process until the property

is in compliance. By involving the owners in the clean-up process, they take ownership of the situation and its resolution. Often property owners are just as relieved as their neighbours are to have the clean-up completed!

If you have a concern about a property in your neighbourhood, complaints may be made using the Bylaw Enforcement dispatch line at **780.352.0005**. Complainant's information is always kept in confidence.



Ice/Water Rescue

2022 was the County of Wetaskiwin Fire Departments (South Pigeon Lake and Mulhurst Bay) sixth full year of providing ice and water rescue on Pigeon Lake.

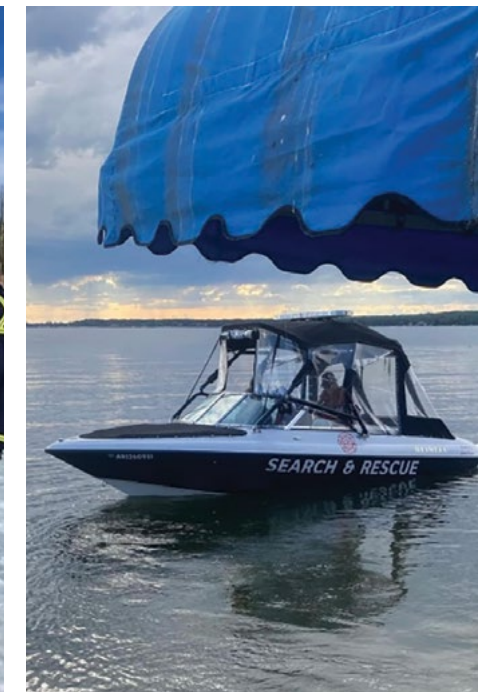
Training

Training exercises took place in the spring of 2022. Since the inception of the program, the training scenarios have become more elaborate and often involve several other partner agencies. The training this past spring involved the RCMP, Central Alberta Dive Rescue Society, Alberta Parks, Alberta Fish and Wildlife, and fire departments from Mulhurst Bay and South Pigeon Lake.

Equipment

Currently the South Pigeon Lake and Mulhurst Bay Fire Departments have adequate equipment to provide a high-level ice and water rescue service.

The current ice water rescue reserve balance allows the purchase and repair of equipment as needed to continue to provide this valuable service to the residents around Pigeon Lake as well as visitors throughout the year.



2022
3 Calls

2021
8 Calls

2020
9 Calls

Protective Services



Community Peace Officers

Community Peace Officers (CPO) are employed by the County of Wetaskiwin and with authorization to operate by the Alberta Solicitor General Public Security Division. Unlike other law enforcement agencies, Peace Officers are employed to carry out specific duties as assigned by Council which include public relations/awareness, public safety, disaster services, conducting preventative patrols, as well as providing assistance to the Police of jurisdiction as requested.

What do Peace Officers do?

Peace Officers are employed by the County of Wetaskiwin to keep the public safe and assist with education. This includes:

- Investigating traffic related complaints.
- Provide education on rules and regulations surrounding the Traffic Safety Act, which includes questions regarding your driver's license, vehicle, trailer, RV's, off-highway vehicles (ATV, Side-by-Side, Snowmobiles), child seat and securement, rules and regulations regarding travelling on County roads, and much more.

- Assist with investigating property related violations including trespassing, littering and issues relating to animals.
- Assist with answering Cannabis consumption regulations, firearms regulations and noise complaints within the County of Wetaskiwin.
- Officers work hand-in-hand with Fire Services and can help with education and inspection of fires during winter months, permit, and ban season.
- Assist with any questions regarding rules and regulations within our Municipal Parks, including Twin Lakes Park, Coal Lake-South Park, Mound Red Park, Buck Lake Park, Battle Lake Park and Red Deer Lake Park during our summer months.

So, if the County residents have any questions or wish to make a complaint, feel free to approach our Officers or contact our CPO dispatch line **780.352.0005**.

What does Road Infrastructure mean? Why should I care about Road Bans?

The County of Wetaskiwin builds and maintains paved and unpaved highways for the enjoyment and use of the residents of the County of Wetaskiwin. Weight limits and Road Bans for Commercial Vehicles have been established to prevent heavy/overweight trucks from damaging the highway, which in-turn helps with keeping the taxes down, as roads can be quite expensive to build and maintain. When the road needs work, the price tag can be quite high. Peace Officers assist with the enforcement of these road bans by regularly inspecting Commercial Vehicles that are observed travelling on these roads and ensure that they are complying with the regulations. It is estimated that a one kilometer stretch of road can cost anywhere from \$800,000 to a \$1,000,000 to build/re-build, which is why the protection of these roadways are important to all of us. If you observe Commercial Vehicles travelling in your subdivision or roads that have an annual or seasonal ban, please ensure you report these vehicles to the CPO Complaint Line **780.352.0005**.

Latest news from our Peace Officers

In March, Protective Services added a 4th Peace Officer, Skylar Schellenberg, to our ranks. CPO Schellenberg is a former Edmonton Huskies football player and brings with him 3 years of law enforcement experience to the department. Adding CPO Schellenberg to the team helps our existing officers with much needed support in their ability to serve the County of Wetaskiwin residents.

Community Peace Officers Graham Harper and Dan Rabel received the Alberta Emergency Services Medal for 22 and 12 years of service respectively to the citizens of the Province of Alberta. Congratulations to both of them for



their years of outstanding service to the County of Wetaskiwin. Fun fact, all four serving Peace Officers have a combined service experience of over 40 years.

The department has acquired and secured a fourth Patrol Vehicle with the addition of the new CPO. It still needs to be equipped and outfitted, but residents can expect to see the new vehicle on the road in the Summer this year.

Peace Officers work and proactively patrol over 3,200 kilometers of local road within the County of Wetaskiwin and at times find themselves in cellular and radio dead spots. This not only affects their service provided to the county residents, but also puts officers at risk due to lack of effective communication to fellow officers, collaborative partners, and dispatch. This year, the department has been working towards upgrading their radio systems that are AFRRCS (Alberta First Responder Radio Communications System) programmable. This improves the officer's ability to communicate directly and work collaboratively with Fire Services, RCMP, Alberta Sheriffs and EMS.

Within the first 3 months of this year, Peace Officers have completed an approximate 30,000 kilometers in patrol distance within the County.

In January, Peace Officers completed their yearly recertification in their use-of-force training, Baton and OC Spray use as required by the Peace Officer policy.

Transfer Station Information

Transfer Station Fees

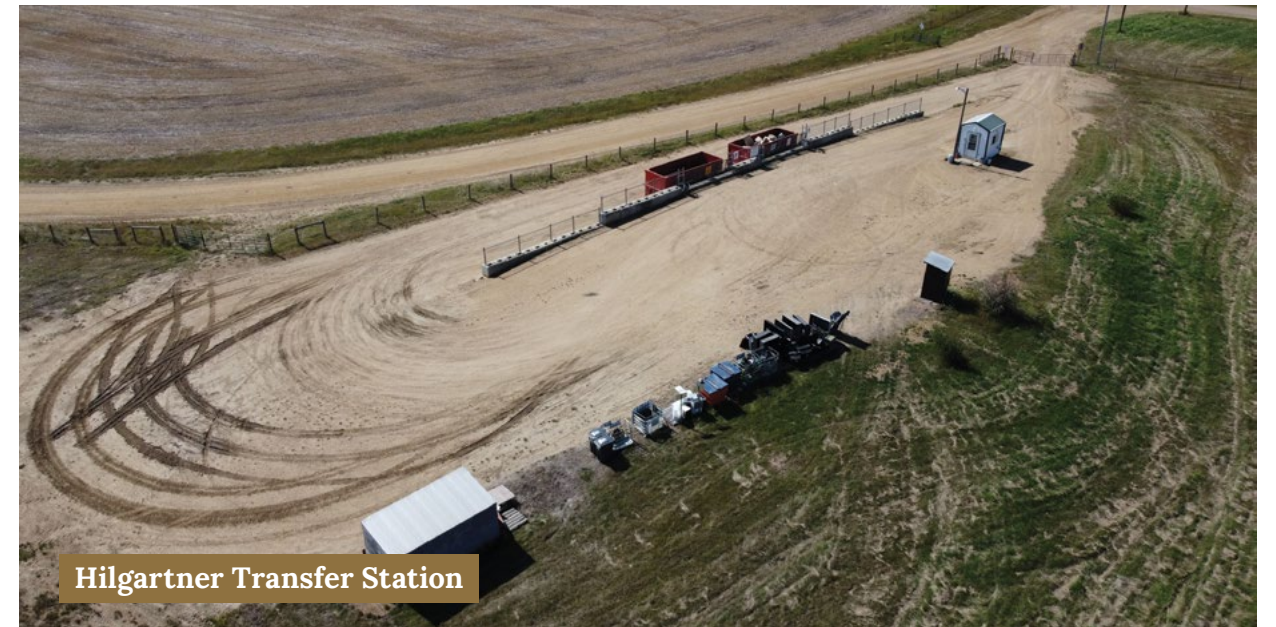
As per Fees & Charges Bylaw, current fees for the transfer stations are as follows:

\$50—Loads in excess of 132 cubic feet (i.e. - 1/2 ton pick-up box capacity 8 ft long x 5.5 ft wide x 3 ft deep)

\$20—Appliances, white goods (with or without freon)—fee is per appliance

To clarify, the **\$50** charge refers to the total load regardless of the load contents. All recyclables (trees, metal, etc.) will be considered as contents within each load and will be charged accordingly if in excess of the 132 cubic feet capacity

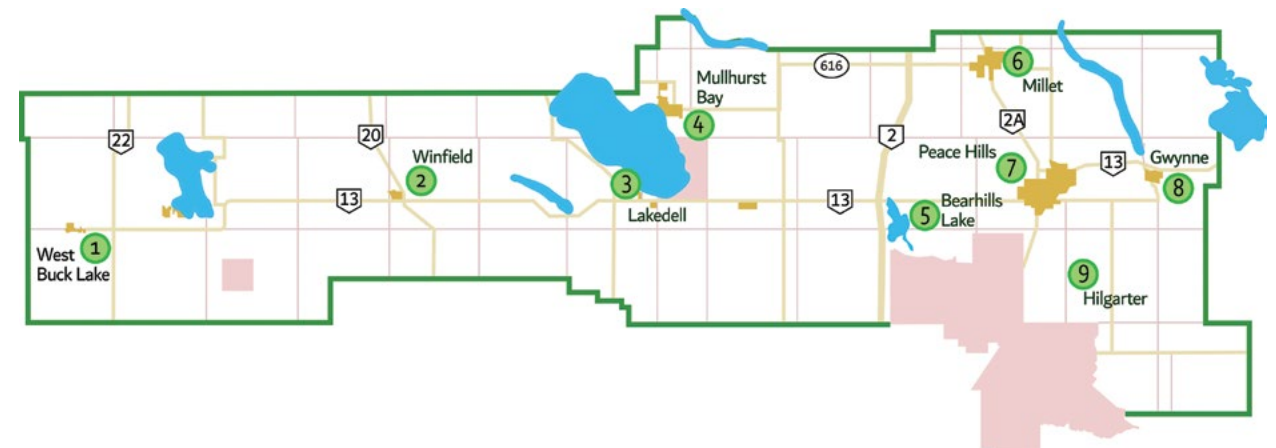
Station	Monday	Tuesday	Wednesday	Thursday	Friday	Saturday	Sunday
Bearhills	Closed	9:00am-5:00pm	Closed	Closed	Closed	9:00am-5:00pm	Closed
Buck Lake	Closed	9:00am-5:00pm	Closed	Closed	Closed	9:00am-5:00pm	Closed
Hilgartner	Closed	10:00am-4:00pm	Closed	Closed	Closed	10:00am-4:00pm	Closed
Gwynne	Closed	9:00am-5:00pm	Closed	Closed	Closed	9:00am-5:00pm	Closed
Lakedell	9:00am-5:00pm	Closed	9:00am-5:00pm	Closed	Closed	9:00am-5:00pm	Closed
Millet	Closed	9:00am-5:00pm	Closed	12:00pm-8:00pm	Closed	9:00am-5:00pm	Closed
Mulhurst Bay	Closed	9:00am-5:00pm	Closed	May 1-Oct 31: Noon-8:00pm Nov 1-April 30: 9:00am-5:00pm	Closed	9:00am-5:00pm	Closed
Peace Hills	Closed	Closed	April 1-Sept 30: Noon-8:00pm Oct 1-Mar 31: 9:00am-5:00pm	Closed	Closed	9:00am-5:00pm	Closed
Winfield	Closed	9:00am-5:00pm	Closed	Closed	Closed	9:00am-5:00pm	Closed



Hilgartner Transfer Station



Lakedell Transfer Station



Public Works



Dust Control

The County of Wetaskiwin is now accepting applications for the 2023 Dust Control Program. Any resident wishing to have an application of dust control must submit a completed application and payment to the County of Wetaskiwin Administration office no later than June 1. Late applications may not be considered.

Dust control services shall only be offered during the period of **May 15 to August 31** of each calendar year and is not guaranteed within a specific time frame. Cost is **\$6.50 per lineal metre** (plus GST) and entitles to only one (1) application. Re-treatments of dust control area may be requested; however, re-treatments shall be charged at \$6.50 per lineal metre.

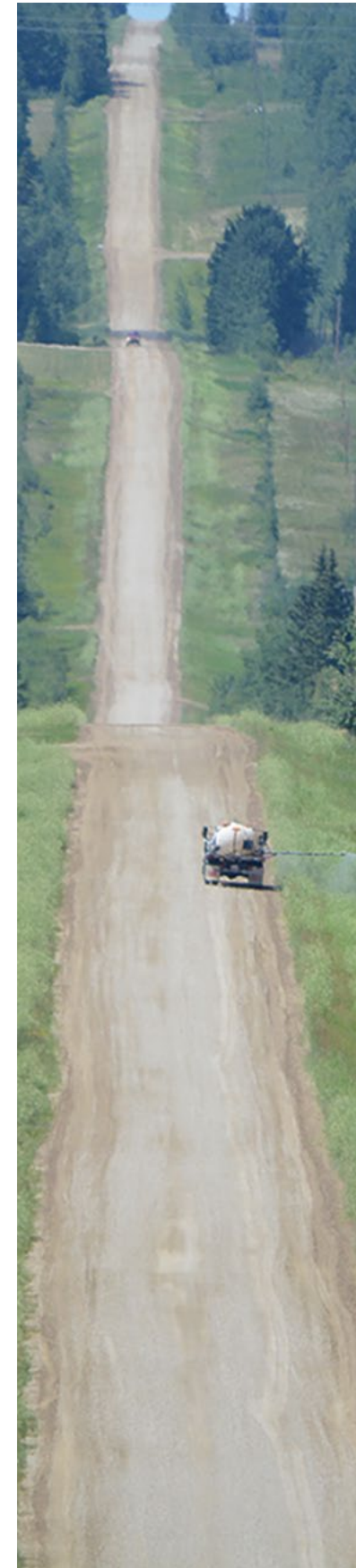
Application forms and flags are available at the County of Wetaskiwin Administration office, Falun Co-op, Buck Lake Hardware and Seely's General (Alder Flats). The application form can also be found on the County website: www.county.wetaskiwin.ab.ca/dust-control or can be faxed or emailed to residents upon request.

Changes for 2023:

As per the County's Dust Control Program Policy 32.1.1, residents or companies seeking private dust control treatment to local roadways are given the opportunity to hire a qualified independent third-party contractor to perform the work. The Director of Public Works shall pre-qualify contractors seeking to conduct business as well as approve the type of dust abatement products to be applied. These include chloride-based compounds (salts), polymers, plant-based lignosulfonates, water, and various blended combinations. Unacceptable dust control products include petroleum-based materials such as crude oil, asphalt emulsions, used motor oil, and asphalt oil.

For more information, please visit www.county.wetaskiwin.ab.ca/dust-control or contact Public Works at **780.361.6241** or pwadmin@county10.ca. Application of dust control product will not commence until Seasonal Road Bans have been lifted.

**Deadline for Application:
June 1, 2023**



County or Provincial Road?

Road maintenance in the County of Wetaskiwin is a cooperative effort at both the local and provincial level.

County local roads include Township and Range Roads and associated bridges along with roads in hamlets and subdivisions. For any issues or concerns regarding road maintenance of County roads, contact the Public Works Call Centre **780.361.6241**. After hours, contact **780.352.0005**.

All provincial numbered highways (ie: Highways 2, 2A, 13, 20, 761, 814, etc.) are under the jurisdiction of the Province of Alberta (Alberta Transportation). Private contractors are hired by the province to operate and maintain all numbered primary and secondary highways. Mainroad Alberta Contracting is the provincial contractor for highways within the County.

Road Construction Projects

All new road construction projects will be posted on the County website www.county.wetaskiwin.ab.ca under Road Construction Projects as they are approved by Council. Updates will be posted periodically. To stay informed, go to the following link to sign up and receive notification when projects are added and updates are posted:

<https://www.county.wetaskiwin.ab.ca/notify>

Stay Informed-Newsflash-County Projects

The Public Works Department mails notices to landowners who will be directly affected by construction projects. Inquiries can be made by calling the Public Works Call Centre at **780.361.6241** or email pwadmin@county10.ca

Contact Information

*For concerns or issues on
County roads:*

Public Works
780.361.6241
pwadmin@county10.ca

*For concerns or issues on
provincial numbered highways:*

**Mainroad Alberta
Contracting**
1.877.875.3263
(24 hours day/7 days week)



Other Information

Notify Me

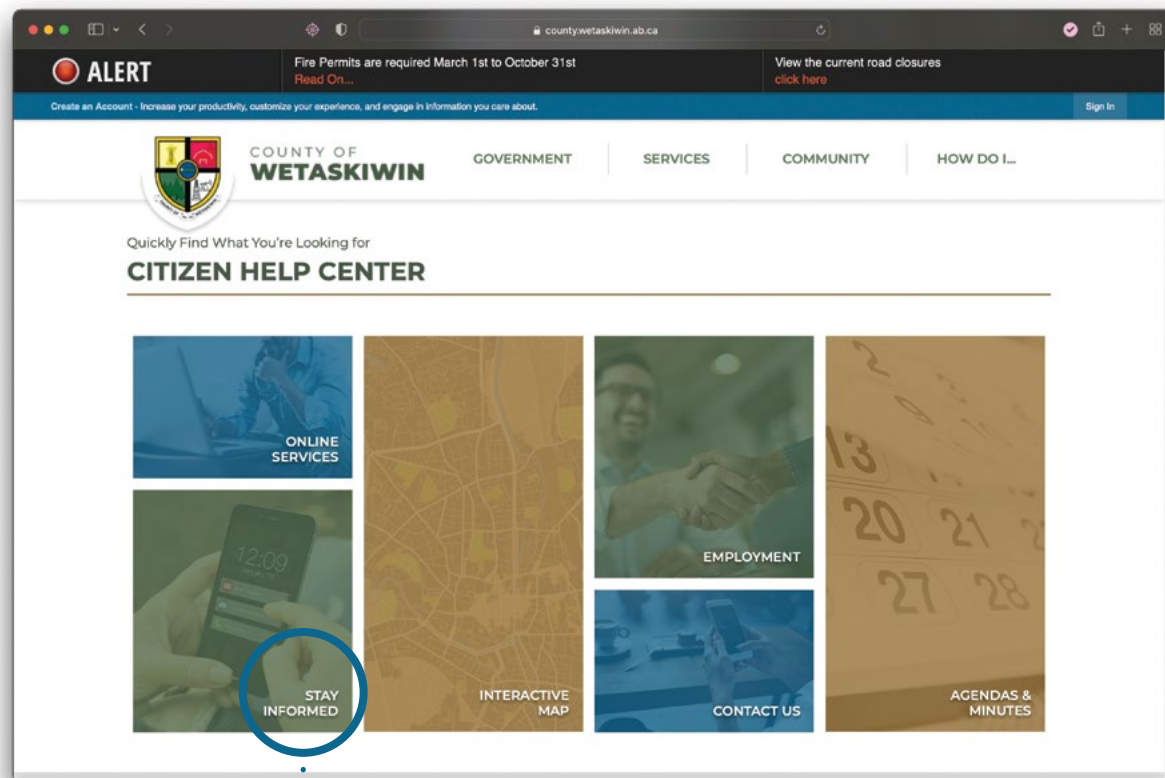
In an effort to increase communication, the County has refreshed our Notify Me categories on our website.

<https://www.county.wetaskiwin.ab.ca/notify>

Sign-Up to Stay Informed

Through Notify Me residents can sign up to receive a variety of notifications via email or text message.

The County has recently added new categories to the News Flash section including agricultural news, community events, Council highlights and utility updates.



..... Click here to sign-up for notifications

Sign-Up Online

1. Enter your email address and click sign in.
2. If you would like to receive notifications by text message instead of email click the box below and enter your phone number and select save.

If you need help signing up call
780.361.6220 or email
communications@county10.ca

1 **Notify Me®** Available Lists

1. Type your email address in the box and select **Sign In**.
2. If you want to receive text messages enter your phone number and select **Save**.
3. To subscribe or unsubscribe click and/or next to the lists to which you wish to subscribe/unsubscribe.

Please sign in to subscribe, unsubscribe, or manage your subscriptions

Email Address

2 **Your Profile Information**

Email Address
john.smith123@gmail.com

I prefer to receive HTML emails when available

I would like to be able to receive text messages on my mobile phone

Phone Number
780-123-4567 Save

Ex: 555-555-0123. Standard text messaging rates apply.

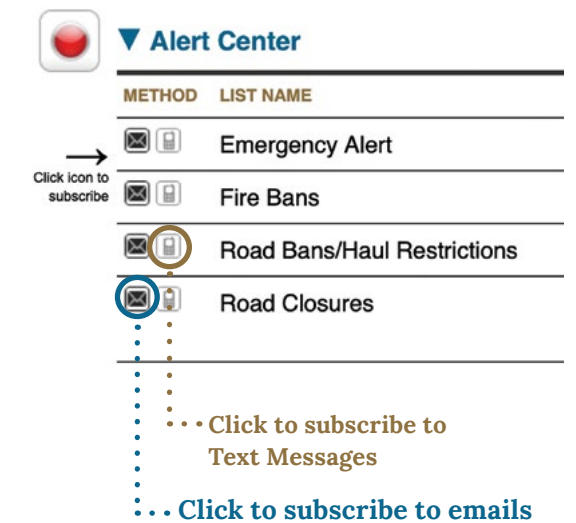
Unsubscribe from All Lists

Click Icon to Subscribe

To subscribe select the icon next to the name of the category you would like to subscribe to.

1. Select the **envelope** to subscribe for **emails** OR select the **phone** to subscribe to **text messages**.
2. Once you subscribe to the topics you want to see notifications about, you will receive an email confirming your subscription.

*You can unsubscribe or add subscriptions at any time.



Staff Directory

Main Office/General Inquiries

780.352.3321 or 1.800.661.4125

Public Works Call Centre

780.361.6241

Complaint & After Hours
Dispatch

780.352.0005 or 1.800.665.0338

Newsletter Design

Anna Kraemer | annakraemer.ca



Rod Hawken
Chief Administrative
Officer (CAO)
rhawken@county10.ca
780.361.6225



Jeff Chipley
Assistant CAO
jchipley@county10.ca
780.361.6223



Stephen Majek
Director of Agricultural
Services
smajek@county10.ca
780.361.6226



René Boutin
Director of Assessment
Services
rboutin@county10.ca
780.361.6233



Naomi Finseth
Communications
Officer
nfinseth@county10.ca
780.361.6220



Mike Zajac
Director of Emergency
Services
mzajac@county10.ca
780.361.6240



Eric Hofbauer
Director of Finance
ehofbauer@county10.ca
780.361.6228



Shawna Frederickson
Manager of
Information Services
sfrederickson@county10.ca
780.361.6229



Geoff Lynch
Director of Leisure &
Community Services
glynch@county10.ca
780.361.6227



Neal Sarnecki
Director of Planning &
Economic Development
nsarnecki@county10.ca
780.361.6235



Neil Powell
Director of Public Works
npowell@county10.ca
780.361.6241



Dallas Vikse
Public Works Manager
of Operations
dvikse@county10.ca
780.361.6241



County of Wetaskiwin No. 10

Mailing: Box 6960

Wetaskiwin, AB T9A 2G5

243019A Hwy 13

Phone: 780.352.3321

Fax: 780.352.3486

www.county.wetaskiwin.ab.ca

facebook.com/wetaskiwincounty